

## Product Datasheet

# Rabbit LYRIC/AEG1 Recombinant Monoclonal Antibody (orb1710824)

<b>Catalog Number</b>	orb1710824
<b>Category</b>	Antibodies
<b>Description</b>	LYRIC/AEG1 Antibody
<b>Target</b>	LYRIC/AEG1
<b>Clonality</b>	Recombinant
<b>Species/Host</b>	Rabbit
<b>Isotype</b>	IgG
<b>Conjugation</b>	Unconjugated
<b>Reactivity</b>	Human, Mouse
<b>Form/Appearance</b>	Liquid
<b>Concentration</b>	250 µg/ml
<b>Buffer/Preservatives</b>	Borate Buffered Saline (BBS) pH 8.2 with 0.1% rAlbumin and 0.09% Sodium Azide
<b>Purification</b>	Purified
<b>Immunogen</b>	Between 475 and 525
<b>UniProt ID</b>	<b>Q86UE4</b>
<b>Tested applications</b>	FC, ICC, IHC, IP, WB

### Biorbyt Ltd.

7 Signet Court, Swann Road  
Cambridge  
CB5 8LA  
United Kingdom

Email: [info@biorbyt.com](mailto:info@biorbyt.com), [support@biorbyt.com](mailto:support@biorbyt.com)

Phone: [+44 \(0\)1223 859353](tel:+44(0)1223859353) | Fax: [+1 \(415\) 651-8558](tel:+1(415)651-8558)

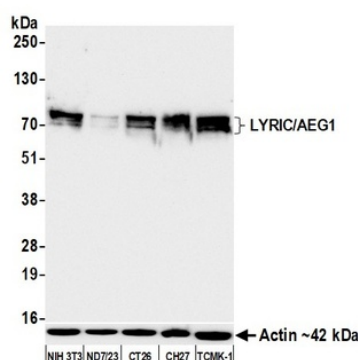
### Biorbyt LLC

68 TW Alexander Drive  
Research Triangle Park  
Durham  
NC 27713-2847  
United States

Email: [info@biorbyt.com](mailto:info@biorbyt.com), [support@biorbyt.com](mailto:support@biorbyt.com)

Phone: [+1 \(415\) 906-5211](tel:+1(415)906-5211) | Fax: [+1 \(415\) 651-8558](tel:+1(415)651-8558)

<b>Dilution range</b>	WB: 1:1,000, IP: 20 µl/1 mg lysate, IHC: 1:50 to 1:500. Epitope retrieval with citrate buffer pH 6.0 is recommended for FFPE tissue sections., ICC: 1:50 to 1:500. Epitope retrieval with citrate buffer pH6.0 is recommended for FFPE cell sections.
<b>Application notes</b>	Format: Whole IgG
<b>Antibody Type</b>	Primary Antibody
<b>Clone Number</b>	BLR258L
<b>Storage</b>	Maintain refrigerated at 2-8°C for up to 2 weeks. For long term storage store at -20°C in small aliquots to prevent freeze-thaw cycles.
<b>Note</b>	For research use only
<b>NCBI</b>	<a href="#">NP_848927.2</a>
<b>Expiration Date</b>	12 months from date of receipt.



Detection of mouse LYRIC/AEG1 by western blot. Samples: Whole cell lysate (25 µg) from NIH 3T3, ND7/23, CT26, CH27, and TCMK-1 cells prepared using NETN lysis buffer. Antibody: Rabbit anti-LYRIC/AEG1 recombinant monoclonal antibody (orb1710824) used at 1:1000. Secondary: HRP-conjugated goat anti-rabbit IgG. Detection: Chemiluminescence with an exposure time of 10 seconds. Lower Panel: Rabbit anti-Actin recombinant monoclonal antibody.

**Biorbyt Ltd.**

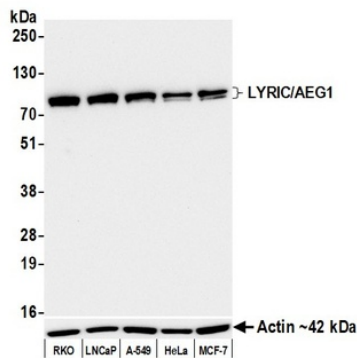
7 Signet Court, Swann Road  
Cambridge  
CB5 8LA  
United Kingdom

Email: [info@biorbyt.com](mailto:info@biorbyt.com), [support@biorbyt.com](mailto:support@biorbyt.com)  
Phone: +44 (0)1223 859353 | Fax: +1 (415) 651-8558

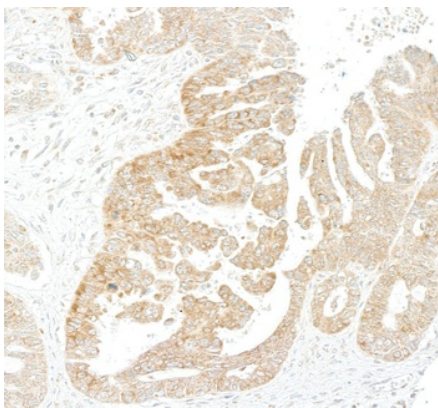
**Biorbyt LLC**

68 TW Alexander Drive  
Research Triangle Park  
Durham  
NC 27713-2847  
United States

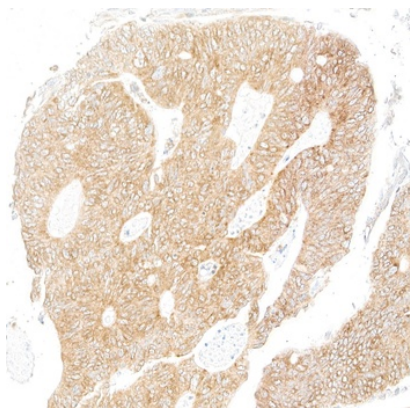
Email: [info@biorbyt.com](mailto:info@biorbyt.com), [support@biorbyt.com](mailto:support@biorbyt.com)  
Phone: +1 (415) 906-5211 | Fax: +1 (415) 651-8558



Detection of human LYRIC/AEG1 by western blot. Samples: Whole cell lysate (10 µg) from RKO, LNCaP, A-549, HeLa, and MCF-7 cells prepared using NETN lysis buffer. Antibody: Rabbit anti-LYRIC/AEG1 recombinant monoclonal antibody (orb1710824) used at 1:1000. Secondary: HRP-conjugated goat anti-rabbit IgG. Detection: Chemiluminescence with an exposure time of 10 seconds. Lower Panel: Rabbit anti-Actin recombinant monoclonal antibody.



Detection of human LYRIC/AEG1 by immunohistochemistry. Sample: FFPE section of human ovarian carcinoma. Antibody: Rabbit anti-LYRIC/AEG1 recombinant monoclonal antibody (orb1710824). Secondary: HRP-conjugated goat anti-rabbit IgG.



Detection of human LYRIC/AEG1 by immunohistochemistry. Sample: FFPE section of human colon carcinoma. Antibody: Rabbit anti-LYRIC/AEG1 recombinant monoclonal antibody (orb1710824). Secondary: HRP-conjugated goat anti-rabbit IgG.

**Biorbyt Ltd.**

7 Signet Court, Swann Road  
Cambridge  
CB5 8LA  
United Kingdom

Email: [info@biorbyt.com](mailto:info@biorbyt.com), [support@biorbyt.com](mailto:support@biorbyt.com)

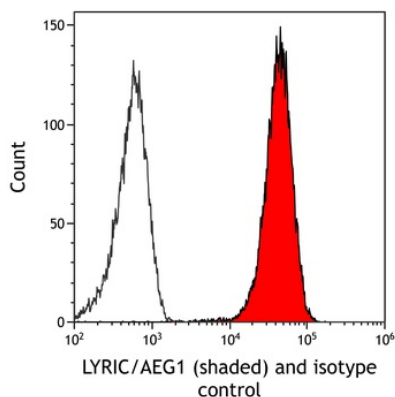
Phone: +44 (0)1223 859353 | Fax: +1 (415) 651-8558

**Biorbyt LLC**

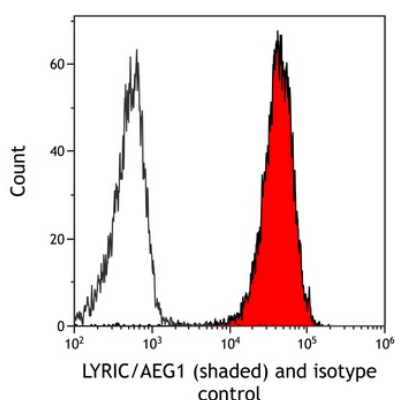
68 TW Alexander Drive  
Research Triangle Park  
Durham  
NC 27713-2847  
United States

Email: [info@biorbyt.com](mailto:info@biorbyt.com), [support@biorbyt.com](mailto:support@biorbyt.com)

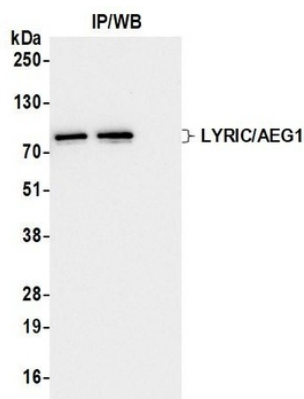
Phone: +1 (415) 906-5211 | Fax: +1 (415) 651-8558



Detection of human LYRIC/AEG1 (shaded) in Jurkat cells by flow cytometry. Antibody: Rabbit anti-LYRIC/AEG1 recombinant monoclonal antibody (orb1710824) or isotype control (unshaded). Secondary: DyLight® 650-conjugated goat anti-rabbit IgG.



Detection of mouse LYRIC/AEG1 (shaded) in NIH3T3 cells by flow cytometry. Antibody: Rabbit anti-LYRIC/AEG1 recombinant monoclonal antibody (orb1710824) or isotype control (unshaded). Secondary: DyLight® 650-conjugated goat anti-rabbit IgG.



Detection of human LYRIC/AEG1 by western blot of immunoprecipitates. Samples: Whole cell lysate (1.0 mg per IP reaction; 20% of IP loaded) from RKO cells prepared using NETN lysis buffer. Antibodies: Rabbit anti-LYRIC/AEG1 recombinant monoclonal antibody (orb1710824) used for IP at 20 µl/mg lysate.

**Biorbyt Ltd.**

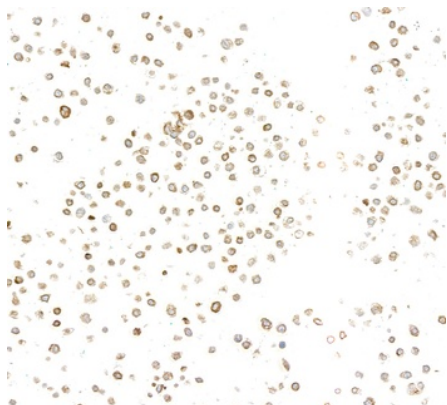
7 Signet Court, Swann Road  
Cambridge  
CB5 8LA  
United Kingdom

Email: [info@biorbyt.com](mailto:info@biorbyt.com), [support@biorbyt.com](mailto:support@biorbyt.com)  
Phone: +44 (0)1223 859353 | Fax: +1 (415) 651-8558

**Biorbyt LLC**

68 TW Alexander Drive  
Research Triangle Park  
Durham  
NC 27713-2847  
United States

Email: [info@biorbyt.com](mailto:info@biorbyt.com), [support@biorbyt.com](mailto:support@biorbyt.com)  
Phone: +1 (415) 906-5211 | Fax: +1 (415) 651-8558



Detection of human LYRIC/AEG1 by immunocytochemistry.  
Sample: FFPE section of human RKO cells. Antibody: Rabbit anti-LYRIC/AEG1 recombinant monoclonal antibody (orb1710824).  
Secondary: HRP-conjugated goat anti-rabbit IgG.



Detection of mouse LYRIC/AEG1 by immunocytochemistry.  
Sample: FFPE section of mouse CT26 cells. Antibody: Rabbit anti-LYRIC/AEG1 recombinant monoclonal antibody (orb1710824).  
Secondary: HRP-conjugated goat anti-rabbit IgG.

**Biorbyt Ltd.**

7 Signet Court, Swann Road  
Cambridge  
CB5 8LA  
United Kingdom

Email: [info@biorbyt.com](mailto:info@biorbyt.com), [support@biorbyt.com](mailto:support@biorbyt.com)

Phone: [+44 \(0\)1223 859353](tel:+44(0)1223859353) | Fax: [+1 \(415\) 651-8558](tel:+1(415)651-8558)

**Biorbyt LLC**

68 TW Alexander Drive  
Research Triangle Park  
Durham  
NC 27713-2847  
United States

Email: [info@biorbyt.com](mailto:info@biorbyt.com), [support@biorbyt.com](mailto:support@biorbyt.com)

Phone: [+1 \(415\) 906-5211](tel:+1(415)906-5211) | Fax: [+1 \(415\) 651-8558](tel:+1(415)651-8558)