

Product Datasheet

Rabbit LOX-1 Recombinant Monoclonal Antibody (orb1710818)

Catalog Number	orb1710818
Category	Antibodies
Description	LOX-1 Antibody
Target	LOX-1
Clonality	Recombinant
Species/Host	Rabbit
Isotype	IgG
Conjugation	Unconjugated
Reactivity	Human
Form/Appearance	Liquid
Concentration	1000 µg/ml
Buffer/Preservatives	Borate Buffered Saline (BBS) pH 8.2 with 0.09% Sodium Azide, rAlbumin-Free
Purification	Purified
Immunogen	Residues 61-273 (ECD)
UniProt ID	P78380
Tested applications	ICC, IHC, WB

Biorbyt Ltd.

7 Signet Court, Swann Road
Cambridge
CB5 8LA
United Kingdom

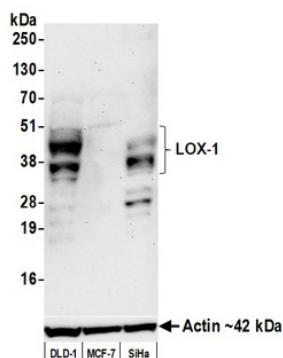
Email: info@biorbyt.com, support@biorbyt.com
Phone: [+44 \(0\)1223 859353](tel:+44(0)1223859353) | Fax: [+1 \(415\) 651-8558](tel:+1(415)651-8558)

Biorbyt LLC

68 TW Alexander Drive
Research Triangle Park
Durham
NC 27713
United States

Email: info@biorbyt.com, support@biorbyt.com
Phone: [+1 \(415\) 906-5211](tel:+1(415)906-5211) | Fax: [+1 \(415\) 651-8558](tel:+1(415)651-8558)

Dilution range	WB: 1:1,000, IHC: 1:100 to 1:500. Epitope retrieval with citrate buffer pH 6.0 is recommended for FFPE tissue sections., ICC: 1:100 to 1:500. Epitope retrieval with citrate buffer pH6.0 is recommended for FFPE cell sections.
Application notes	Format: Whole IgG
Antibody Type	Primary Antibody
Clone Number	BLR262L
Storage	Maintain refrigerated at 2-8°C for up to 2 weeks. For long term storage store at -20°C in small aliquots to prevent freeze-thaw cycles.
Note	For research use only
NCBI	NP_002534.1
Expiration Date	12 months from date of receipt.



Detection of human LOX-1 by western blot. Samples: Whole cell lysate (25 µg) from DLD-1, MCF-7, and SiHa cells prepared using NETN lysis buffer. Antibody: Rabbit anti-LOX-1 recombinant monoclonal antibody (orb1710818) used at 1:1000. Secondary: HRP-conjugated goat anti-rabbit IgG. Detection: Chemiluminescence with an exposure time of 3 minutes. Lower Panel: Rabbit anti-Actin recombinant monoclonal antibody.

Biorbyt Ltd.

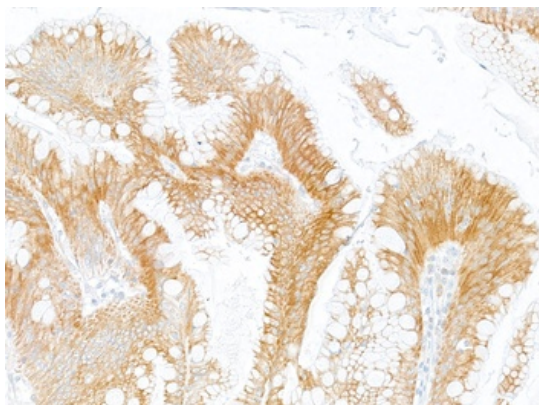
7 Signet Court, Swann Road
Cambridge
CB5 8LA
United Kingdom

Email: info@biorbyt.com, support@biorbyt.com
Phone: +44 (0)1223 859353 | Fax: +1 (415) 651-8558

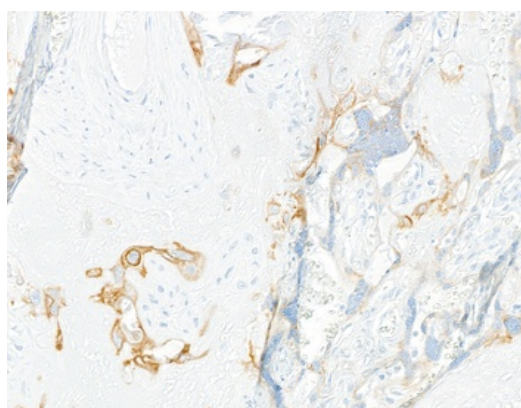
Biorbyt LLC

68 TW Alexander Drive
Research Triangle Park
Durham
NC 27713
United States

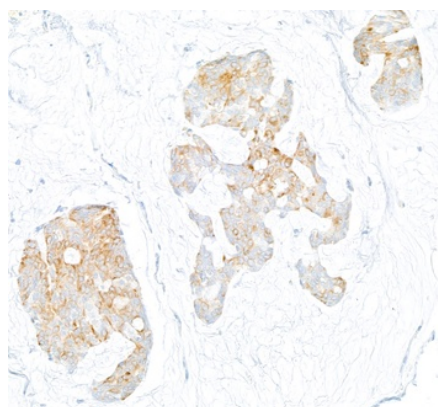
Email: info@biorbyt.com, support@biorbyt.com
Phone: +1 (415) 906-5211 | Fax: +1 (415) 651-8558



Detection of human LOX-1 by immunohistochemistry. Sample: FFPE section of human gastric carcinoma. Antibody: Rabbit anti-LOX-1 recombinant monoclonal antibody (orb1710818). Secondary: HRP-conjugated goat anti-rabbit IgG.



Detection of human LOX-1 by immunohistochemistry. Sample: FFPE section of human placenta. Antibody: Rabbit anti-LOX-1 recombinant monoclonal antibody (orb1710818). Secondary: HRP-conjugated goat anti-rabbit IgG.



Detection of human LOX-1 by immunohistochemistry. Sample: FFPE section of human breast carcinoma. Antibody: Rabbit anti-LOX-1 recombinant monoclonal antibody (orb1710818). Secondary: HRP-conjugated goat anti-rabbit IgG.

Biorbyt Ltd.

7 Signet Court, Swann Road
Cambridge
CB5 8LA
United Kingdom

Email: info@biorbyt.com, support@biorbyt.com

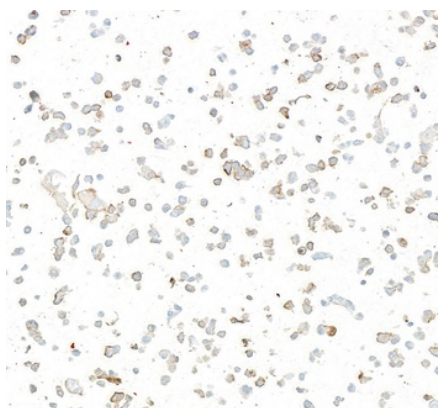
Phone: [+44 \(0\)1223 859353](tel:+44(0)1223859353) | Fax: [+1 \(415\) 651-8558](tel:+1(415)651-8558)

Biorbyt LLC

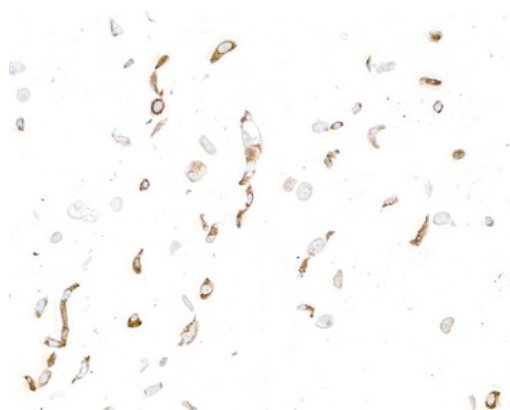
68 TW Alexander Drive
Research Triangle Park
Durham
NC 27713
United States

Email: info@biorbyt.com, support@biorbyt.com

Phone: [+1 \(415\) 906-5211](tel:+1(415)906-5211) | Fax: [+1 \(415\) 651-8558](tel:+1(415)651-8558)



Detection of human LOX-1 by immunocytochemistry. Sample: FFPE section of human DLD-1 cells. Antibody: Rabbit anti-LOX-1 recombinant monoclonal antibody (orb1710818). Secondary: HRP-conjugated goat anti-rabbit IgG.



Detection of human LOX-1 by immunocytochemistry. Sample: FFPE section of human NCI-H226 cells. Antibody: Rabbit anti-LOX-1 recombinant monoclonal antibody (orb1710818). Secondary: HRP-conjugated goat anti-rabbit IgG.

Biorbyt Ltd.

7 Signet Court, Swann Road
Cambridge
CB5 8LA
United Kingdom

Email: info@biorbyt.com, support@biorbyt.com

Phone: [+44 \(0\)1223 859353](tel:+44(0)1223859353) | Fax: [+1 \(415\) 651-8558](tel:+1(415)651-8558)

Biorbyt LLC

68 TW Alexander Drive
Research Triangle Park
Durham
NC 27713
United States

Email: info@biorbyt.com, support@biorbyt.com

Phone: [+1 \(415\) 906-5211](tel:+1(415)906-5211) | Fax: [+1 \(415\) 651-8558](tel:+1(415)651-8558)