

Product Datasheet

CD22 Antibody [hL22 (Epratuzumab)], Rabbit IgG - Research Grade Biosimilar (orb1671891)

Catalog Number	orb1671891
Description	CD22 Antibody [hL22 (Epratuzumab)], Rabbit IgG - Research Grade Biosimilar
Reactivity	Human, Primate
Conjugation	Unconjugated
Tested Applications	Blocking, FC, IP
Immunogen	This antibody was prepared by the humanization of LL2 (EPB-2), a murine anti-CD22 IgG2a raised against Raji Burkitt lymphoma cells. Murine sequences comprise 5–10% of the molecule, with the remainder being human framework sequences, which greatly reduces the potential for immunogenicity (Traczewski, 2010).
Target	CD22
Preservatives	PBS with 0.02% Proclin 300.
Concentration	batch dependent
Storage	Maintain refrigerated at 2-8°C for up to 2 weeks. For long term storage store at -20°C in small aliquots to prevent freeze-thaw cycles.
Note	For research use only
Isotype	IgG kappa
Clonality	Recombinant
Clone Number	hL22 (Epratuzumab)
Antibody Type	Primary Antibody

Biorbyt Ltd.

7 Signet Court, Swann's Road,
Cambridge, CB5 8LA, United Kingdom
Email: info@biorbyt.com, support@biorbyt.com
Phone: [+44 \(0\) 1223 859-353](tel:+44201223859353) | Fax: [+1 \(415\) 651-8558](tel:+14156518558)

Biorbyt LLC.

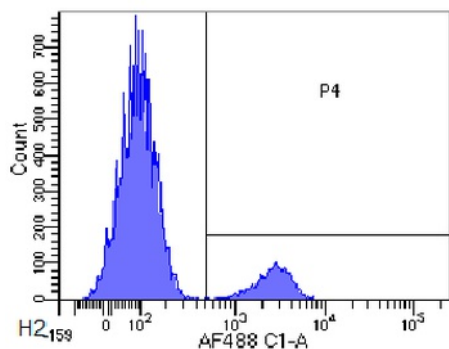
68 TW Alexander Drive,
Durham, NC, 27713, United States
Email: info@biorbyt.com, support@biorbyt.com
Phone: [+1 \(415\) 906-5211](tel:+14159065211) | Fax: [+1 \(415\) 651-8558](tel:+14156518558)

Uniprot ID

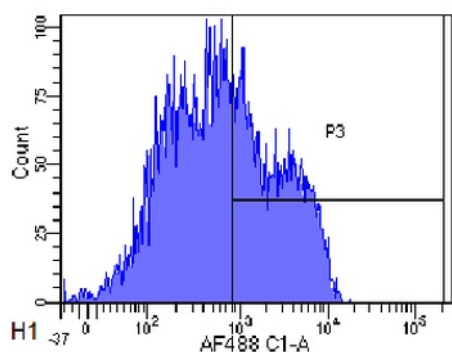
P20273

Expiration Date

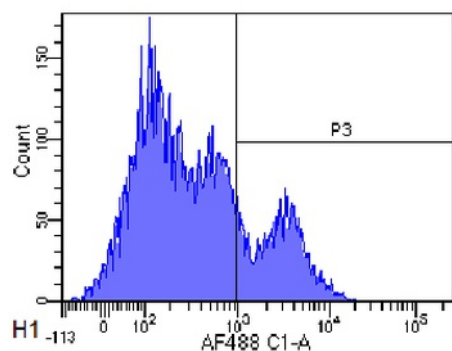
12 months from date of receipt.



Flow-cytometry using anti-CD22 antibody Epratuzum28. Human lymphocytes were stained with an isotype control (3.0 - panel A) or the rmeric version of Epratuzum2 - panel B) at a concentration of 1 ug/ml for 30 mins at RT. After washing- bound antibody was detected using a AF488 conjugated donkey anti-ribody and cells analysed on a FACSCanto flow-cytometer.



Flow-cytometry using anti-CD22 antibody Epratuzum28. Rhesus monkey lymphocytes were stained with an isotype control (3.0 - panel A) or the rmeric version of Epratuzum2 - panel B) at a concentration of 1 ug/ml for 30 mins at RT. After washing- bound antibody was detected using a AF488 conjugated donkey anti-ribody and cells analysed on a FACSCanto flow-cytometer.



Flow-cytometry using anti-CD22 antibody Epratuzum28. Cynomolgus monkey lymphocytes were stained with an isotype control (3.0 - panel A) or the rmeric version of Epratuzum2 - panel B) at a concentration of 1 ug/ml for 30 mins at RT. After washing- bound antibody was detected using a AF488 conjugated donkey anti-ribody and cells analysed on a FACSCanto flow-cytometer.

Biorbyt Ltd.

7 Signet Court, Swann's Road,
Cambridge, CB5 8LA, United Kingdom
Email: info@biorbyt.com, support@biorbyt.com
Phone: [+44 \(0\) 1223 859-353](tel:+44201223859353) | Fax: [+1 \(415\) 651-8558](tel:+441456518558)

Biorbyt LLC.

68 TW Alexander Drive,
Durham, NC, 27713, United States
Email: info@biorbyt.com, support@biorbyt.com
Phone: [+1 \(415\) 906-5211](tel:+14159065211) | Fax: [+1 \(415\) 651-8558](tel:+14156518558)