

Product Datasheet

Human Activin A Protein (orb16656)

Catalog Number	orb16656
Category	Proteins
Description	Human Activin A, premium grade is expressed from human 293 cells (HEK293). It contains AA Gly 311 - Ser 426 (Accession # AAH07858.1).
Target	Activin A
Conjugation	Unconjugated
Tag	Native
Reactivity	Human
Form/Appearance	Powder
Buffer/Preservatives	0.056% TFA in 30% ACN
Purity	95%
UniProt ID	AAH07858.1
RRID	AB_10749569
MW	13.0 kDa
Application notes	This protein carries no "tag". The protein has a calculated MW of 13.0 kDa. The protein migrates as 14-15 kDa under reducing (R) condition, and 23-25 kDa under non-reducing (NR) condition (SDS-PAGE) due to glycosylation.
Expression System	HEK293
Endotoxins	0.1 EU per µg

Biorbyt Ltd.

7 Signet Court, Swann Road
Cambridge
CB5 8LA
United Kingdom

Email: info@biorbyt.com, support@biorbyt.com

Phone: [+44 \(0\)1223 859353](tel:+44(0)1223859353) | Fax: [+1 \(415\) 651-8558](tel:+1(415)651-8558)

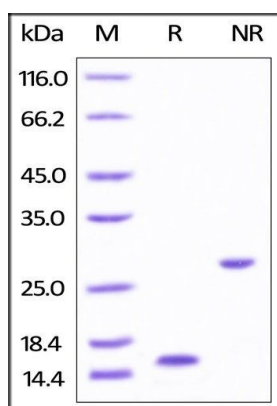
Biorbyt LLC

68 TW Alexander Drive
Research Triangle Park
Durham
NC 27713
United States

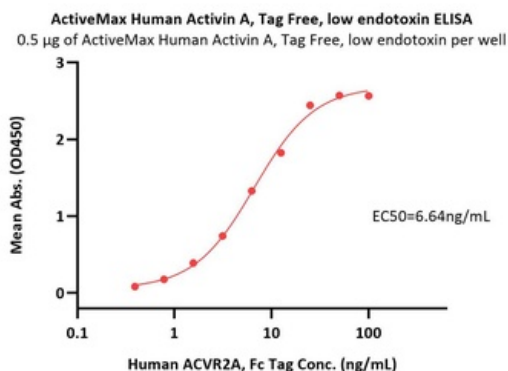
Email: info@biorbyt.com, support@biorbyt.com

Phone: [+1 \(415\) 906-5211](tel:+1(415)906-5211) | Fax: [+1 \(415\) 651-8558](tel:+1(415)651-8558)

Expression Region	Gly 311 - Ser 426
Storage	-20°C
Note	For research use only
NCBI	AAH07858.1
Expiration Date	6 months from date of receipt.



SDS-PAGE analysis of Human Activin A protein



Immobilized Human Activin A, premium grade (Cat. No. orb16656) at 5 µg/mL (100 µL/well) can bind Human ACVR2A, Fc Tag (Cat. No. orb1101193) with a linear range of 0.4-25 ng/mL (QC tested).

Biorbyt Ltd.

7 Signet Court, Swann Road
Cambridge
CB5 8LA
United Kingdom

Email: info@biorbyt.com, support@biorbyt.com
Phone: +44 (0)1223 859353 | Fax: +1 (415) 651-8558

Biorbyt LLC

68 TW Alexander Drive
Research Triangle Park
Durham
NC 27713
United States

Email: info@biorbyt.com, support@biorbyt.com
Phone: +1 (415) 906-5211 | Fax: +1 (415) 651-8558