

Product Datasheet

Neutrophil Elastase Rabbit Polyclonal Antibody (orb1614)

Catalog Number	orb1614
Category	Antibodies
Description	Neutrophil Elastase Rabbit Polyclonal Antibody is an unconjugated antibody that specifically recognizes Neutrophil Elastase. Neutrophil Elastase antibody detects endogenous levels of total Neutrophil Elastase. Generated against a KLH conjugated synthetic peptide derived from human Neutrophil Elastase. The peptide is available as orb374811. It is supplied in liquid form and exhibits reactivity with Human, Mouse and Rat samples. The suitable applications for this antibody are IHC-P and WB.
Target	Neutrophil Elastase. Neutrophil Elastase antibody detects endogenous levels of total Neutrophil Elastase
Clonality	Polyclonal
Species/Host	Rabbit
Isotype	IgG
Conjugation	Unconjugated
Reactivity	Human, Mouse, Rat
Form/Appearance	10 mM PBS, 0.02% sodium azide
Concentration	- 100 µg (in 200 µl): 0.5 mg/ml- 200 µg (in 400 µl): 0.5 mg/ml
Purity	Polyclonal antibodies are purified by peptide affinity chromatography

Biorbyt Ltd.

7 Signet Court, Swann Road
Cambridge
CB5 8LA
United Kingdom

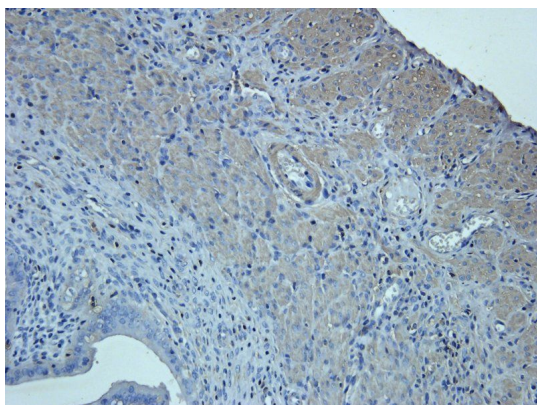
Email: info@biorbyt.com, support@biorbyt.com
Phone: [+44 \(0\)1223 859353](tel:+44(0)1223859353) | Fax: [+1 \(415\) 651-8558](tel:+1(415)651-8558)

Biorbyt LLC

68 TW Alexander Drive
Research Triangle Park
Durham
NC 27713-2847
United States

Email: info@biorbyt.com, support@biorbyt.com
Phone: [+1 \(415\) 906-5211](tel:+1(415)906-5211) | Fax: [+1 \(415\) 651-8558](tel:+1(415)651-8558)

Immunogen	KLH conjugated synthetic peptide derived from human Neutrophil Elastase. Please contact us for the exact immunogen sequence. The peptide is available as orb374811.
UniProt ID	Q3UP87, P08246
MW	29 kDa
Tested applications	IHC-P, WB
Dilution range	IHC-P: 1:50-500, WB: 1:100-500
Storage	Maintain refrigerated at 2-8°C for up to 2 weeks. For long term storage store at -20°C in small aliquots to prevent freeze-thaw cycles.
Note	For research use only
Entrez	1991
NCBI	21, 11, 001963, 001972
Expiration Date	12 months from date of receipt.



IHC-P image of rat uterus tissue using anti-Neutrophil Elastase (2.5 ug/ml)

Biorbyt Ltd.

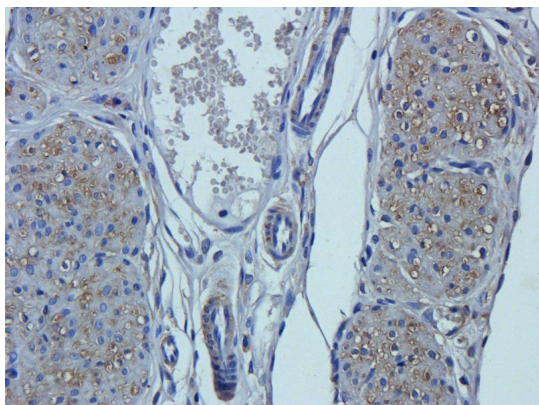
7 Signet Court, Swann Road
Cambridge
CB5 8LA
United Kingdom

Email: info@biorbyt.com, support@biorbyt.com
Phone: [+44 \(0\)1223 859353](tel:+44(0)1223859353) | Fax: [+1 \(415\) 651-8558](tel:+1(415)651-8558)

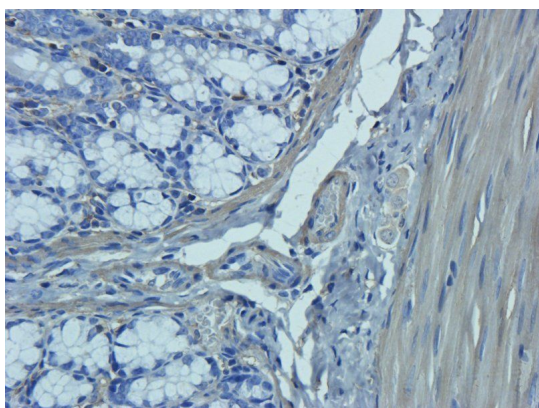
Biorbyt LLC

68 TW Alexander Drive
Research Triangle Park
Durham
NC 27713-2847
United States

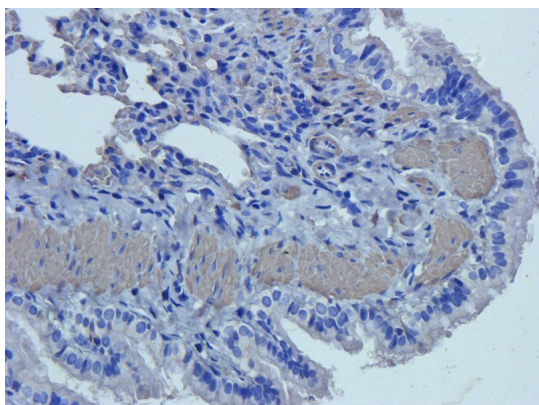
Email: info@biorbyt.com, support@biorbyt.com
Phone: [+1 \(415\) 906-5211](tel:+1(415)906-5211) | Fax: [+1 \(415\) 651-8558](tel:+1(415)651-8558)



IHC-P image of rat uterus tissue using anti-Neutrophil Elastase (2.5 ug/ml)



Immunohistochemical staining of rat colon tissue using anti-Neutrophil Elastase (2.5 ug/ml)



Immunohistochemical staining of paraffin embedded rat lung tissue using anti-Neutrophil Elastase (2.5 ug/ml)

Biorbyt Ltd.

7 Signet Court, Swann Road
Cambridge
CB5 8LA
United Kingdom

Email: info@biorbyt.com, support@biorbyt.com

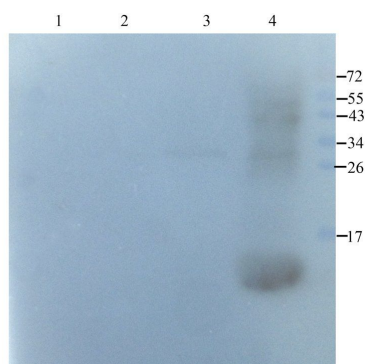
Phone: [+44 \(0\)1223 859353](tel:+44(0)1223859353) | Fax: [+1 \(415\) 651-8558](tel:+1(415)651-8558)

Biorbyt LLC

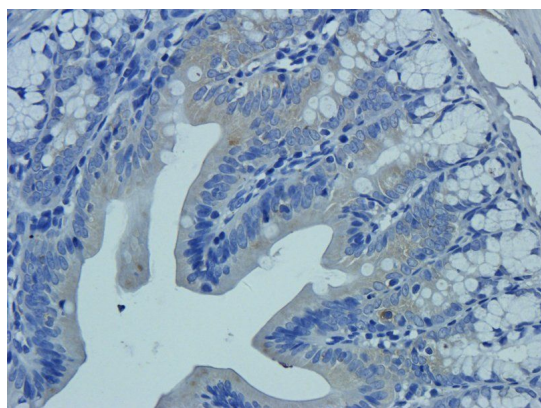
68 TW Alexander Drive
Research Triangle Park
Durham
NC 27713-2847
United States

Email: info@biorbyt.com, support@biorbyt.com

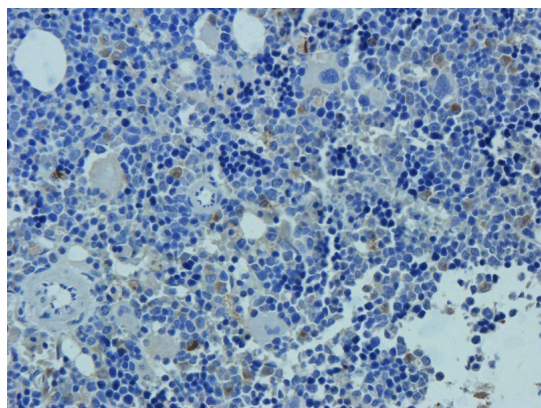
Phone: [+1 \(415\) 906-5211](tel:+1(415)906-5211) | Fax: [+1 \(415\) 651-8558](tel:+1(415)651-8558)



Western blot analysis of rat colon (lane 1), mouse stomach (lane 2), mouse liver (lane 3), mouse spleen (lane 4) using Neutrophil Elastase antibody (1 ug/ml)



IHC-P staining of rat colon tissue using Neutrophil Elastase antibody (2.5 ug/ml)



IHC-P image of rat bone marrow tissue using anti-Neutrophil Elastase (2.5 ug/ml)

Biorbyt Ltd.

7 Signet Court, Swann Road
Cambridge
CB5 8LA
United Kingdom

Email: info@biorbyt.com, support@biorbyt.com

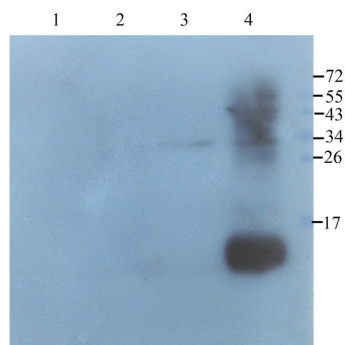
Phone: [+44 \(0\)1223 859353](tel:+44(0)1223859353) | Fax: [+1 \(415\) 651-8558](tel:+1(415)651-8558)

Biorbyt LLC

68 TW Alexander Drive
Research Triangle Park
Durham
NC 27713-2847
United States

Email: info@biorbyt.com, support@biorbyt.com

Phone: [+1 \(415\) 906-5211](tel:+1(415)906-5211) | Fax: [+1 \(415\) 651-8558](tel:+1(415)651-8558)



WB analysis of rat colon (lane 1), mouse stomach (lane 2), mouse liver (lane 3), mouse spleen (lane 4) using Neutrophil Elastase antibody (1 ug/ml)

Biorbyt Ltd.

7 Signet Court, Swann Road
Cambridge
CB5 8LA
United Kingdom

Email: info@biorbyt.com, support@biorbyt.com

Phone: [+44 \(0\)1223 859353](tel:+44(0)1223859353) | Fax: [+1 \(415\) 651-8558](tel:+1(415)651-8558)

Biorbyt LLC

68 TW Alexander Drive
Research Triangle Park
Durham
NC 27713-2847
United States

Email: info@biorbyt.com, support@biorbyt.com

Phone: [+1 \(415\) 906-5211](tel:+1(415)906-5211) | Fax: [+1 \(415\) 651-8558](tel:+1(415)651-8558)