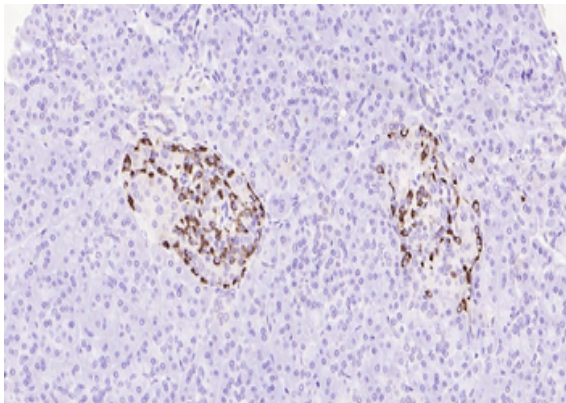


Product Datasheet

Glucagon Ready-To-Use IHC Kit (orb1588142)

Catalog Number	orb1588142
Category	Assays and Kits
Description	The Glucagon Ready-To-Use IHC Kit is suitable for FFPE tissue.
Reactivity	Human, Mouse, Rat
Tested applications	IHC
Sample Types	FFPE tissue
Storage	Please store components at the temperatures indicated on the individual tube labels. The kit is stable for 6 months from the date of receipt.
Note	For research use only
Expiration Date	Please enquire.



Immunohistochemical analysis of paraffin embedded human pancreas tissue slide using orb1588142 (Glucagon IHC Kit).

Biorbyt Ltd.

7 Signet Court, Swann Road
Cambridge
CB5 8LA
United Kingdom

Email: info@biorbyt.com, support@biorbyt.com

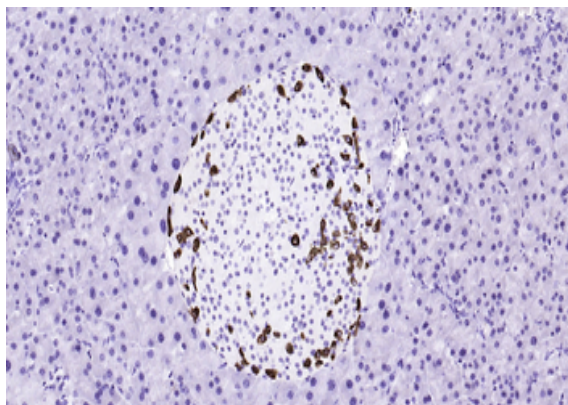
Phone: [+44 \(0\)1223 859353](tel:+44(0)1223859353) | Fax: [+1 \(415\) 651-8558](tel:+1(415)651-8558)

Biorbyt LLC

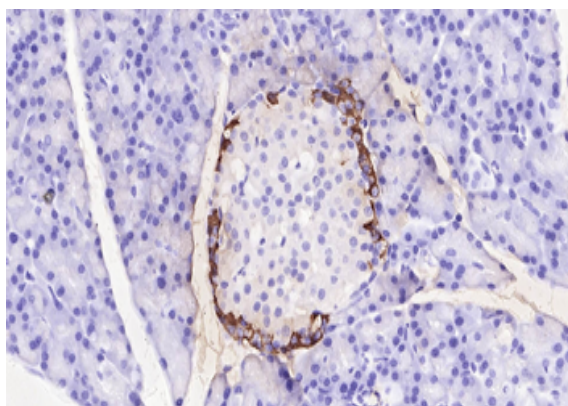
68 TW Alexander Drive
Research Triangle Park
Durham
NC 27713
United States

Email: info@biorbyt.com, support@biorbyt.com

Phone: [+1 \(415\) 906-5211](tel:+1(415)906-5211) | Fax: [+1 \(415\) 651-8558](tel:+1(415)651-8558)



Immunohistochemical analysis of paraffin embedded mouse pancreas tissue slide using orb1588142 (Glucagon IHC Kit).



Immunohistochemical analysis of paraffin embedded rat pancreas tissue slide using orb1588142 (Glucagon IHC Kit).

Biorbyt Ltd.

7 Signet Court, Swann Road
Cambridge
CB5 8LA
United Kingdom

Email: info@biorbyt.com, support@biorbyt.com

Phone: [+44 \(0\)1223 859353](tel:+44(0)1223859353) | Fax: [+1 \(415\) 651-8558](tel:+1(415)651-8558)

Biorbyt LLC

68 TW Alexander Drive
Research Triangle Park
Durham
NC 27713
United States

Email: info@biorbyt.com, support@biorbyt.com

Phone: [+1 \(415\) 906-5211](tel:+1(415)906-5211) | Fax: [+1 \(415\) 651-8558](tel:+1(415)651-8558)