

## Product Datasheet

### PAX6 Rabbit Polyclonal Antibody (orb158103)

<b>Catalog Number</b>	orb158103
<b>Category</b>	Antibodies
<b>Description</b>	PAX6 Rabbit Polyclonal Antibody
<b>Target</b>	PAX6
<b>Clonality</b>	Polyclonal
<b>Species/Host</b>	Rabbit
<b>Isotype</b>	IgG
<b>Conjugation</b>	Unconjugated
<b>Reactivity</b>	Human, Mouse, Rat
<b>Form/Appearance</b>	10 mM PBS, 0.02% sodium azide
<b>Concentration</b>	-100 µg (in 200 µl): 0.5 mg/ml-200 µg (in 400 µl): 0.5 mg/ml
<b>Purity</b>	Polyclonal antibodies are purified by peptide affinity chromatography
<b>Immunogen</b>	KLH conjugated synthetic peptide derived from human PAX6. Please contact us for the exact immunogen sequence. The peptide is available as orb12943.
<b>MW</b>	47 kDa
<b>Tested applications</b>	IHC-P, WB
<b>Dilution range</b>	IHC-P: 1:50-300, WB: 1:200-1500
<b>Storage</b>	Maintain refrigerated at 2-8°C for up to 2 weeks. For long term storage store at -20°C in small aliquots to prevent freeze-thaw cycles.

**Biorbyt Ltd.**

7 Signet Court, Swann Road  
Cambridge  
CB5 8LA  
United Kingdom

Email: [info@biorbyt.com](mailto:info@biorbyt.com), [support@biorbyt.com](mailto:support@biorbyt.com)

Phone: [+44 \(0\)1223 859353](tel:+44(0)1223859353) | Fax: [+1 \(415\) 651-8558](tel:+1(415)651-8558)

**Biorbyt LLC**

68 TW Alexander Drive  
Research Triangle Park  
Durham  
NC 27713  
United States

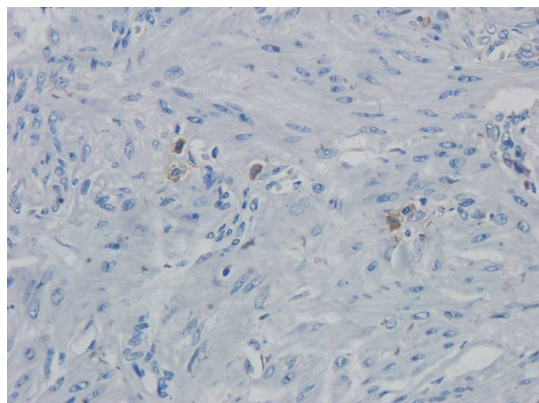
Email: [info@biorbyt.com](mailto:info@biorbyt.com), [support@biorbyt.com](mailto:support@biorbyt.com)

Phone: [+1 \(415\) 906-5211](tel:+1(415)906-5211) | Fax: [+1 \(415\) 651-8558](tel:+1(415)651-8558)

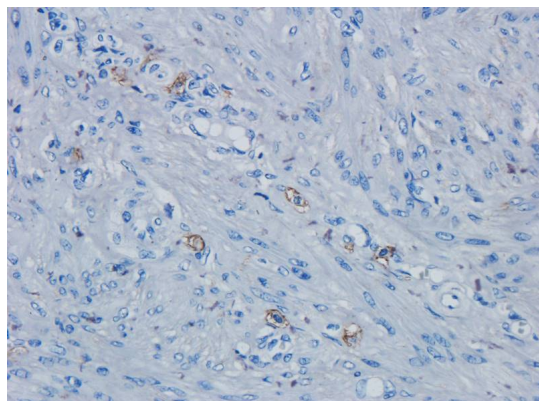
**Note** For research use only

**Entrez** **780**

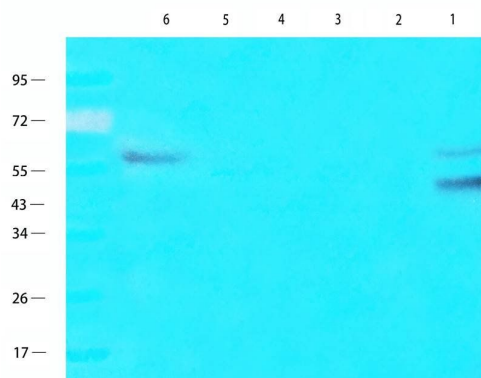
**Expiration Date** 12 months from date of receipt.



IHC-P image of human endometrial cancer tissue using anti-PAX6 (dilution of primary antibody at 2.5 ug/ml)



IHC-P staining of human endometrial cancer tissue using PAX6 antibody (dilution at 2.5 ug/ml)



Western blot analysis of 293t cells (lane 1), HeLa cells (lane 2), human endometrial cancer (lane 3), mouse brain (lane 4), rat spinal cord (lane 5), U251 cells (lane 6) using PAX6 antibody (1 ug/ml)

**Biorbyt Ltd.**

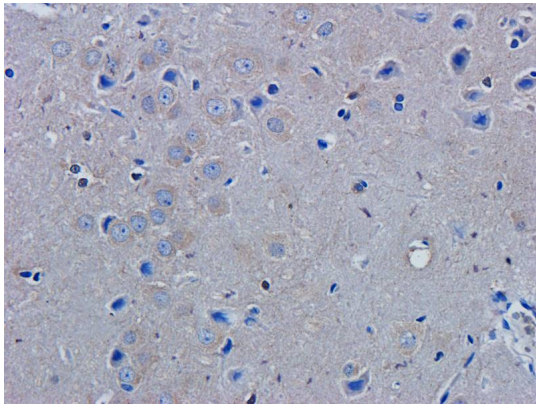
7 Signet Court, Swann Road  
Cambridge  
CB5 8LA  
United Kingdom

Email: [info@biorbyt.com](mailto:info@biorbyt.com), [support@biorbyt.com](mailto:support@biorbyt.com)  
Phone: [+44 \(0\)1223 859353](tel:+44(0)1223859353) | Fax: [+1 \(415\) 651-8558](tel:+1(415)651-8558)

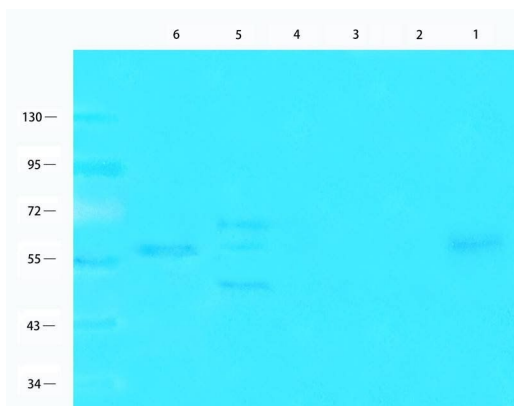
**Biorbyt LLC**

68 TW Alexander Drive  
Research Triangle Park  
Durham  
NC 27713  
United States

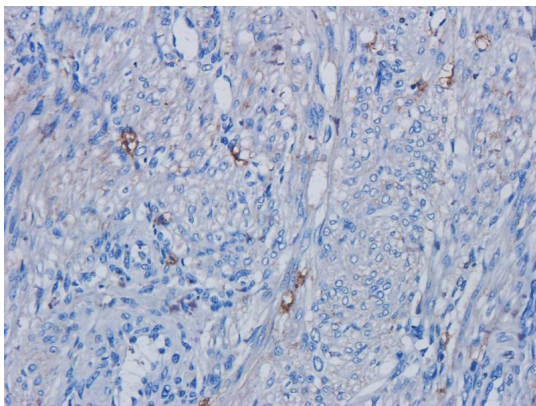
Email: [info@biorbyt.com](mailto:info@biorbyt.com), [support@biorbyt.com](mailto:support@biorbyt.com)  
Phone: [+1 \(415\) 906-5211](tel:+1(415)906-5211) | Fax: [+1 \(415\) 651-8558](tel:+1(415)651-8558)



Immunohistochemical staining of rat brain tissue using PAX6 antibody (dilution of primary antibody - 2.5 ug/ml)



WB analysis of 293t cells (lane 1), Hela cells (lane 2), human endometrial cancer (lane 3), mouse brain (lane 4), rat spinal cord (lane 5), U251 cells (lane 6) using PAX6 antibody (1 ug/ml)



Immunohistochemical staining of human endometrial cancer tissue using PAX6 antibody (dilution of primary antibody - 2.5 ug/ml)

**Biorbyt Ltd.**

7 Signet Court, Swann Road  
Cambridge  
CB5 8LA  
United Kingdom

Email: [info@biorbyt.com](mailto:info@biorbyt.com), [support@biorbyt.com](mailto:support@biorbyt.com)

Phone: [+44 \(0\)1223 859353](tel:+44(0)1223859353) | Fax: [+1 \(415\) 651-8558](tel:+1(415)651-8558)

**Biorbyt LLC**

68 TW Alexander Drive  
Research Triangle Park  
Durham  
NC 27713  
United States

Email: [info@biorbyt.com](mailto:info@biorbyt.com), [support@biorbyt.com](mailto:support@biorbyt.com)

Phone: [+1 \(415\) 906-5211](tel:+1(415)906-5211) | Fax: [+1 \(415\) 651-8558](tel:+1(415)651-8558)