

Product Datasheet

Protein Molecular Weight Marker (orb1567188)

Catalog Number	orb1567188
Category	Tools
Description	Protein Molecular Weight Marker
Conjugation	Unconjugated
Form/Appearance	Liquid (in 1x Loading Buffer)
Concentration	1X
Buffer/Preservatives	Preservative: 0.01% (w/v) Sodium Azide. Stabilizer: None; Buffer: 2.5 mM Tris-HCl, pH 6.8, 2% (w/v) SDS, 250 mM NaCl, 1mM EDTA, 4% (v/v) β -Mercaptoethanol, 35% (v/v) Glycerol and 0.05% (w/v) bromophenol blue
Purity	Protein Molecular Weight Marker is supplied in 1X loading buffer and is ready-to-use. It contains: [62.5 mM Tris-HCl, pH 6.8, 2% (w/v) SDS, 250 mM NaCl, 1mM EDTA, 4% (v/v) β -Mercaptoethanol, 35% (v/v) Glycerol and 0.05% (w/v) bromophenol blue.] This product are unstained markers optimized for use with Coomassie blue staining, but the loading volume can be adjusted for compatibility with other staining methods (i.e. silver staining). The intensity of the 67 kDa bovine albumin band has been increased to serve as a reference.
Tested applications	SDS-PAGE
Application notes	Protein Molecular Weight Marker has been tested and is designed for use in accurate estimation of protein molecular weight in SDS-polyacrylamide gel electrophoresis and western blotting. Thaw the cocktail at room temperature. Gently invert vial several times to ensure that the solution is homogeneous and that any precipitated material is re-dissolved. A loading volume of 5-10 μ l is appropriate for most gel formats
Storage	Store vial at -20° C.

Biorbyt Ltd.

7 Signet Court, Swann Road
Cambridge
CB5 8LA
United Kingdom

Email: info@biorbyt.com, support@biorbyt.com
Phone: [+44 \(0\)1223 859353](tel:+44(0)1223859353) | Fax: [+1 \(415\) 651-8558](tel:+1(415)651-8558)

Biorbyt LLC

68 TW Alexander Drive
Research Triangle Park
Durham
NC 27713-2847
United States

Email: info@biorbyt.com, support@biorbyt.com
Phone: [+1 \(415\) 906-5211](tel:+1(415)906-5211) | Fax: [+1 \(415\) 651-8558](tel:+1(415)651-8558)

Dry Ice Shipping

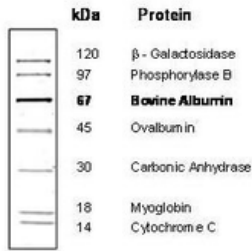
Please note: This product requires shipment on dry ice. A dry ice surcharge will apply.

Note

For research use only

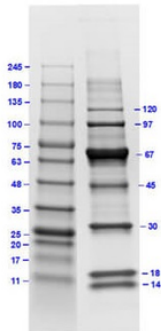
Expiration Date

6 months from date of receipt.



SDS PAGE of Protein Molecular Weight Marker, 14-120 kDa

4-20% Tris-Glycine SDS-PAGE
Stained with Coomassie Blue



SDS PAGE Results of Protein Molecular Weight Marker 14-120kDa. Lane 1: Opal Prestained Molecular Weight Marker (11-245kDa). [7 µl] Lane 2: Protein Molecular Weight Marker (14-120kDa) (p/n orb348606). [5 µl] 4-20% Gel, Coomassie Stained.

Biorbyt Ltd.

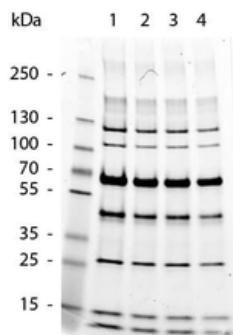
7 Signet Court, Swann Road
Cambridge
CB5 8LA
United Kingdom

Email: info@biorbyt.com, support@biorbyt.com
Phone: [+44 \(0\)1223 859353](tel:+44(0)1223859353) | Fax: [+1 \(415\) 651-8558](tel:+1(415)6518558)

Biorbyt LLC

68 TW Alexander Drive
Research Triangle Park
Durham
NC 27713-2847
United States

Email: info@biorbyt.com, support@biorbyt.com
Phone: [+1 \(415\) 906-5211](tel:+1(415)9065211) | Fax: [+1 \(415\) 651-8558](tel:+1(415)6518558)



SDS-Page of Protein Molecular Weight Marker. Lane 1: Protein Molecular Weight Marker 12.5 uL. Lane 2: Protein Molecular Weight Marker 10.0 uL. Lane 3: Protein Molecular Weight Marker 7.5 uL. Lane 4: Protein Molecular Weight Marker 5.0 uL. Exact molecular weights are detailed on image 1.

Biorbyt Ltd.

7 Signet Court, Swann Road
Cambridge
CB5 8LA
United Kingdom

Email: info@biorbyt.com, support@biorbyt.com
Phone: [+44 \(0\)1223 859353](tel:+44(0)1223859353) | Fax: [+1 \(415\) 651-8558](tel:+1(415)651-8558)

Biorbyt LLC

68 TW Alexander Drive
Research Triangle Park
Durham
NC 27713-2847
United States

Email: info@biorbyt.com, support@biorbyt.com
Phone: [+1 \(415\) 906-5211](tel:+1(415)906-5211) | Fax: [+1 \(415\) 651-8558](tel:+1(415)651-8558)