

## Product Datasheet

### ACTB Antibody (orb1566586)

<b>Catalog Number</b>	orb1566586
<b>Category</b>	Antibodies
<b>Description</b>	ACTB Antibody
<b>Target</b>	ACTB
<b>Clonality</b>	Monoclonal
<b>Isotype</b>	IgG2b
<b>Conjugation</b>	Unconjugated
<b>Reactivity</b>	Algae, Drosophila, Fish, Gallus, Goat, Hamster, Human, Monkey, Mouse, Plant, Porcine, Rabbit, Rat, Saccharomyces, Yeast, Zebrafish
<b>Form/Appearance</b>	Liquid
<b>Concentration</b>	2.5 mg/ml
<b>Buffer/Preservatives</b>	Liquid in PBS containing 50% glycerol, 0.5% rAlbumin and 0.02% sodium azide, pH 7.3.
<b>Purification</b>	Affinity Purified
<b>Immunogen</b>	Purified recombinant human beta actin protein fragments expressed in E.coli.
<b>UniProt ID</b>	<b>P60709</b>
<b>MW</b>	Calculated MW: 42 kDa; Observed MW: 42 kDa
<b>Tested applications</b>	WB
<b>Dilution range</b>	WB: 1/5000-1/10000

**Biorbyt Ltd.**

7 Signet Court, Swann Road  
Cambridge  
CB5 8LA  
United Kingdom

Email: [info@biorbyt.com](mailto:info@biorbyt.com), [support@biorbyt.com](mailto:support@biorbyt.com)

Phone: [+44 \(0\)1223 859353](tel:+44(0)1223859353) | Fax: [+1 \(415\) 651-8558](tel:+1(415)651-8558)

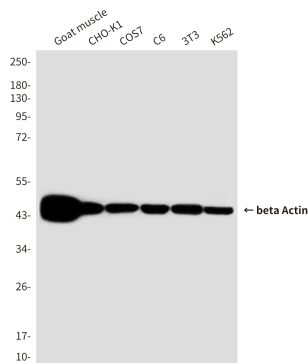
**Biorbyt LLC**

68 TW Alexander Drive  
Research Triangle Park  
Durham  
NC 27713  
United States

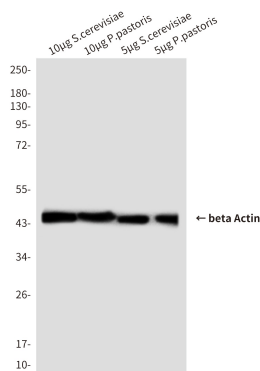
Email: [info@biorbyt.com](mailto:info@biorbyt.com), [support@biorbyt.com](mailto:support@biorbyt.com)

Phone: [+1 \(415\) 906-5211](tel:+1(415)906-5211) | Fax: [+1 \(415\) 651-8558](tel:+1(415)651-8558)

<b>Clone Number</b>	8F10-G10
<b>Storage</b>	Maintain refrigerated at 2-8°C for up to 2 weeks. For long term storage store at -20°C in small aliquots to prevent freeze-thaw cycles.
<b>Note</b>	For research use only
<b>Expiration Date</b>	12 months from date of receipt.



Western blot analysis of beta actin in C6, 3T3, COS7, CHO-K1, K562 and Goat muscle lysates using ACTB Antibody.



Western blot analysis of beta actin in 5ug & 10ug S.cerevisiae and 5ug & 10ug P.pastoris lysates using ACTB Antibody.

**Biorbyt Ltd.**

7 Signet Court, Swann Road  
Cambridge  
CB5 8LA  
United Kingdom

Email: [info@biorbyt.com](mailto:info@biorbyt.com), [support@biorbyt.com](mailto:support@biorbyt.com)

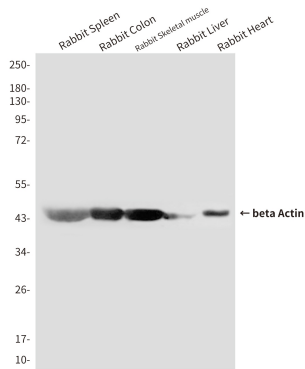
Phone: +44 (0)1223 859353 | Fax: +1 (415) 651-8558

**Biorbyt LLC**

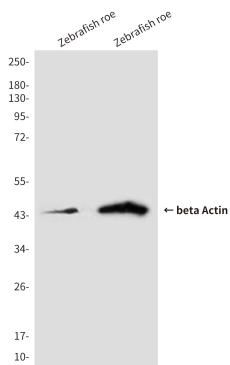
68 TW Alexander Drive  
Research Triangle Park  
Durham  
NC 27713  
United States

Email: [info@biorbyt.com](mailto:info@biorbyt.com), [support@biorbyt.com](mailto:support@biorbyt.com)

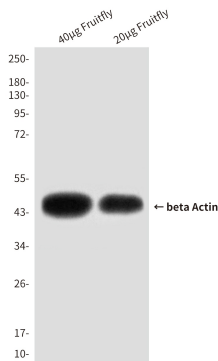
Phone: +1 (415) 906-5211 | Fax: +1 (415) 651-8558



Western blot analysis of beta actin in Rabbit Spleen, Rabbit Colon, Rabbit Skeletal muscle, Rabbit Liver and Rabbit Heart lysates using ACTB Antibody.



Western blot analysis of beta actin in zebrafish roe lysates using ACTB Antibody.



Western blot analysis of beta actin in 20ug and 40ug Fruit fly (*Drosophila melanogaster*) lysates using ACTB Antibody.

**Biorbyt Ltd.**

7 Signet Court, Swann Road  
Cambridge  
CB5 8LA  
United Kingdom

Email: [info@biorbyt.com](mailto:info@biorbyt.com), [support@biorbyt.com](mailto:support@biorbyt.com)

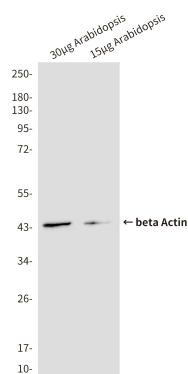
Phone: +44 (0)1223 859353 | Fax: +1 (415) 651-8558

**Biorbyt LLC**

68 TW Alexander Drive  
Research Triangle Park  
Durham  
NC 27713  
United States

Email: [info@biorbyt.com](mailto:info@biorbyt.com), [support@biorbyt.com](mailto:support@biorbyt.com)

Phone: +1 (415) 906-5211 | Fax: +1 (415) 651-8558



Western blot analysis of beta actin in 15ug Arabidopsis and 3ug Arabidopsis lysates using ACTB Antibody.

**Biorbyt Ltd.**

7 Signet Court, Swann Road  
Cambridge  
CB5 8LA  
United Kingdom

Email: [info@biorbyt.com](mailto:info@biorbyt.com), [support@biorbyt.com](mailto:support@biorbyt.com)

Phone: [+44 \(0\)1223 859353](tel:+44(0)1223859353) | Fax: [+1 \(415\) 651-8558](tel:+1(415)651-8558)

**Biorbyt LLC**

68 TW Alexander Drive  
Research Triangle Park  
Durham  
NC 27713  
United States

Email: [info@biorbyt.com](mailto:info@biorbyt.com), [support@biorbyt.com](mailto:support@biorbyt.com)

Phone: [+1 \(415\) 906-5211](tel:+1(415)906-5211) | Fax: [+1 \(415\) 651-8558](tel:+1(415)651-8558)