

Product Datasheet

SINHCAF Rabbit Polyclonal Antibody (orb1562625)

Catalog Number	orb1562625
Category	Antibodies
Description	Purified Rabbit Anti Human SINHCAF Polyclonal antibody.
Target	SINHCAF
Clonality	Polyclonal
Species/Host	Rabbit
Isotype	IgG
Conjugation	Unconjugated
Reactivity	Human
Predicted Reactivity	Mouse, Rat
Form/Appearance	Lyophilized powder with 1% rAlbumin and 0.02% NaN3. Or dissolved in sterile H2O with 50% glycerol.
Purification	Purified by antigen affinity column.
Immunogen	Recombinant fragment corresponding to 1-48 and 151-197aa of human SINHCAF.
MW	25KD
Tested applications	ELISA, WB
Dilution range	WB: 1:500-1:2,000. ELISA: 1:20,000-1:80,000
Application notes	Reconstitute in 100µL of sterile H2O with 50% glycerol.

Biorbyt Ltd.

7 Signet Court, Swann Road
Cambridge
CB5 8LA
United Kingdom

Email: info@biorbyt.com, support@biorbyt.com

Phone: [+44 \(0\)1223 859353](tel:+44(0)1223859353) | Fax: [+1 \(415\) 651-8558](tel:+1(415)651-8558)

Biorbyt LLC

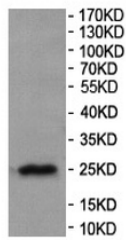
68 TW Alexander Drive
Research Triangle Park
Durham
NC 27713
United States

Email: info@biorbyt.com, support@biorbyt.com

Phone: [+1 \(415\) 906-5211](tel:+1(415)906-5211) | Fax: [+1 \(415\) 651-8558](tel:+1(415)651-8558)

Storage	Maintain refrigerated at 2-8°C for up to 2 weeks. For long term storage store at -20°C in small aliquots to prevent freeze-thaw cycles.
Note	For research use only
Expiration Date	12 months from date of receipt.

SH-SY5Y



Western Blot analysis of
SH-SY5Y cell lysate with
anti-SINHCAF antibody

WB analysis of orb1562625.

Biorbyt Ltd.

7 Signet Court, Swann Road
Cambridge
CB5 8LA
United Kingdom

Email: info@biorbyt.com, support@biorbyt.com
Phone: [+44 \(0\)1223 859353](tel:+44(0)1223859353) | Fax: [+1 \(415\) 651-8558](tel:+1(415)651-8558)

Biorbyt LLC

68 TW Alexander Drive
Research Triangle Park
Durham
NC 27713
United States

Email: info@biorbyt.com, support@biorbyt.com
Phone: [+1 \(415\) 906-5211](tel:+1(415)906-5211) | Fax: [+1 \(415\) 651-8558](tel:+1(415)651-8558)