

Product Datasheet

CFH Rabbit Polyclonal Antibody (orb154941)

Catalog Number	orb154941
Category	Antibodies
Description	Rabbit polyclonal antibody to CFH
Target	CFH
Clonality	Polyclonal
Species/Host	Rabbit
Isotype	IgG
Conjugation	Unconjugated
Reactivity	Human
Predicted Reactivity	Mouse, Rat
Form/Appearance	Lyophilized power with 1% rAlbumin and 0.02% NaN ₃ .
Purification	Purified by antigen affinity column.
Immunogen	Recombinant fragment corresponding to 77-287aa of human CFH.
MW	139KD; 51KD
Tested applications	ELISA, IHC, WB
Dilution range	WB: 1:200-1:1,000
Application notes	Reconstitute in 100µL of sterile H ₂ O with 50% glycerol.

Biorbyt Ltd.

7 Signet Court, Swann Road
Cambridge
CB5 8LA
United Kingdom

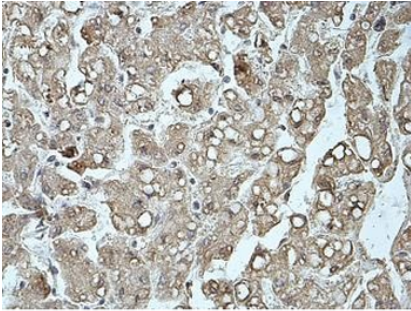
Email: info@biorbyt.com, support@biorbyt.com
Phone: [+44 \(0\)1223 859353](tel:+44(0)1223859353) | Fax: [+1 \(415\) 651-8558](tel:+1(415)651-8558)

Biorbyt LLC

68 TW Alexander Drive
Research Triangle Park
Durham
NC 27713-2847
United States

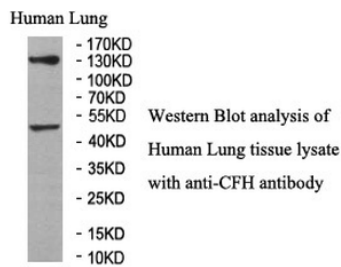
Email: info@biorbyt.com, support@biorbyt.com
Phone: [+1 \(415\) 906-5211](tel:+1(415)906-5211) | Fax: [+1 \(415\) 651-8558](tel:+1(415)651-8558)

Storage	Maintain refrigerated at 2-8°C for up to 2 weeks. For long term storage store at -20°C in small aliquots to prevent freeze-thaw cycles.
Note	For research use only
Expiration Date	12 months from date of receipt.



Immunohistochemical staining of formalin-fixed paraffin-embedded fetal liver staining with anti-CFH antibody

IHC analysis of orb154941.



WB analysis of orb154941.

Biorbyt Ltd.

7 Signet Court, Swann Road
Cambridge
CB5 8LA
United Kingdom

Email: info@biorbyt.com, support@biorbyt.com

Phone: +44 (0)1223 859353 | Fax: +1 (415) 651-8558

Biorbyt LLC

68 TW Alexander Drive
Research Triangle Park
Durham
NC 27713-2847
United States

Email: info@biorbyt.com, support@biorbyt.com

Phone: +1 (415) 906-5211 | Fax: +1 (415) 651-8558