

Product Datasheet

ARHGEF7 Rabbit Polyclonal Antibody (orb154829)

| | |
|-----------------------------|--|
| Catalog Number | orb154829 |
| Category | Antibodies |
| Description | Rabbit polyclonal antibody to ARHGEF7 |
| Target | ARHGEF7 |
| Clonality | Polyclonal |
| Species/Host | Rabbit |
| Isotype | IgG |
| Conjugation | Unconjugated |
| Reactivity | Human |
| Predicted Reactivity | Mouse, Rat |
| Form/Appearance | Lyophilized power with 1% rAlbumin and 0.02% NaN ₃ . |
| Purification | Purified by antigen affinity column. |
| Immunogen | Recombinant fragment corresponding to 264-450aa of human ARHGEF7. |
| MW | 88KD |
| Tested applications | ELISA, WB |
| Dilution range | WB: 1:200-1:1,000 |
| Application notes | Reconstitute in 100µL of sterile H ₂ O with 50% glycerol. |

Biorbyt Ltd.

7 Signet Court, Swann Road
Cambridge
CB5 8LA
United Kingdom

Email: info@biorbyt.com, support@biorbyt.com

Phone: [+44 \(0\)1223 859353](tel:+44(0)1223859353) | Fax: [+1 \(415\) 651-8558](tel:+1(415)651-8558)

Biorbyt LLC

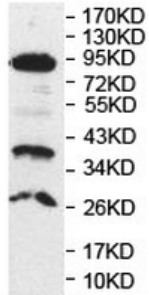
68 TW Alexander Drive
Research Triangle Park
Durham
NC 27713
United States

Email: info@biorbyt.com, support@biorbyt.com

Phone: [+1 \(415\) 906-5211](tel:+1(415)906-5211) | Fax: [+1 \(415\) 651-8558](tel:+1(415)651-8558)

| | |
|------------------------|---|
| Storage | Maintain refrigerated at 2-8°C for up to 2 weeks. For long term storage store at -20°C in small aliquots to prevent freeze-thaw cycles. |
| Note | For research use only |
| Expiration Date | 12 months from date of receipt. |

HepG2



Western Blot analysis of
HepG2 cell lysate with anti
-ARHGEF7 antibody

WB analysis of orb154829.

Biorbyt Ltd.

7 Signet Court, Swann Road
Cambridge
CB5 8LA
United Kingdom

Email: info@biorbyt.com, support@biorbyt.comPhone: [+44 \(0\)1223 859353](tel:+44(0)1223859353) | Fax: [+1 \(415\) 651-8558](tel:+1(415)651-8558)**Biorbyt LLC**

68 TW Alexander Drive
Research Triangle Park
Durham
NC 27713
United States

Email: info@biorbyt.com, support@biorbyt.comPhone: [+1 \(415\) 906-5211](tel:+1(415)906-5211) | Fax: [+1 \(415\) 651-8558](tel:+1(415)651-8558)