

Product Datasheet

Mouse IgG2b Isotype Control PerCP Antibody (orb154540)

Catalog Number	orb154540
Category	Antibodies
Description	Mouse monoclonal antibody conjugated to PerCP which recognizes IgG2b that belongs to many immunoglobulin G. It can be used as a negative control, to distinguish specific from non-specific binding of mouse IgG2b fluorochrome-conjugated antibodies to human cells. It was found that IgG2a was superior to IgG1 in activating complement. IgG2 is an antibody molecule induced by infection.
Clonality	Monoclonal
Isotype	Mouse IgG2b kappa
Conjugation	PerCP
Concentration	0.1 mg/ml
Buffer/Preservatives	Stabilizing phosphate buffered saline (PBS), pH 7.4, 15 mM sodium azide
Purification	Purified antibody is conjugated with activated Peridinin-Chlorophyll Protein (PerCP) under optimum conditions and unconjugated antibody and free fluorochrome are removed by size-exclusion chromatography.
Immunogen	KLH-coupled trinitrophenol
Tested applications	FC

Biorbyt Ltd.

7 Signet Court, Swann Road
Cambridge
CB5 8LA
United Kingdom

Email: info@biorbyt.com, support@biorbyt.com

Phone: [+44 \(0\)1223 859353](tel:+44(0)1223859353) | Fax: [+1 \(415\) 651-8558](tel:+1(415)651-8558)

Biorbyt LLC

68 TW Alexander Drive
Research Triangle Park
Durham
NC 27713-2847
United States

Email: info@biorbyt.com, support@biorbyt.com

Phone: [+1 \(415\) 906-5211](tel:+1(415)906-5211) | Fax: [+1 \(415\) 651-8558](tel:+1(415)651-8558)

Application notes

Negative control: The reagent is intended as an isotype control to establish the amount of non-specific antibody binding. For your particular experiment, use the same concentration of this control antibody as the recommended working concentration of the antigen-specific antibody. Also, when working with prediluted antibodies, dilute the isotype control to the same concentration as is the concentration of the antigen-specific antibody in the prediluted antibody solution you are using. If under particular experimental conditions the background signal of the isotype control is too high (usually when working concentrations of used antibodies are above 10 µg/ml of incubation mixture), change the conditions of your experiment to reduce the background.

Specificity

This mouse IgG2b (kappa) monoclonal antibody (clone MPC-11) reacts with an epitope irrelevant for a variety of resting, activated, live, and fixed human, mouse, and rat tissues.

Antibody Type

Secondary Antibody

Clone Number

MPC-11

Storage

Store at 2-8°C. Protect from prolonged exposure to light. Do not freeze.

Note

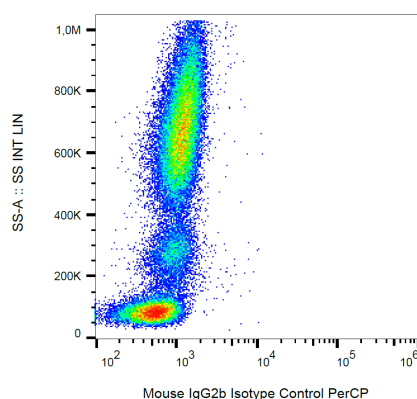
For research use only

Entrez

35

Expiration Date

12 months from date of receipt.



Example of nonspecific mouse IgG2b (MPC-11) PerCP signal on human peripheral blood; surface staining, 8 µg/ml.

Biorbyt Ltd.

7 Signet Court, Swann Road
Cambridge
CB5 8LA
United Kingdom

Email: info@biorbyt.com, support@biorbyt.com

Phone: [+44 \(0\)1223 859353](tel:+44(0)1223859353) | Fax: [+1 \(415\) 651-8558](tel:+1(415)651-8558)

Biorbyt LLC

68 TW Alexander Drive
Research Triangle Park
Durham
NC 27713-2847
United States

Email: info@biorbyt.com, support@biorbyt.com

Phone: [+1 \(415\) 906-5211](tel:+1(415)906-5211) | Fax: [+1 \(415\) 651-8558](tel:+1(415)651-8558)