

## Product Datasheet

# Mouse IgG2b Isotype Control Biotin Antibody (orb154468)

<b>Catalog Number</b>	orb154468
<b>Category</b>	Antibodies
<b>Description</b>	Mouse monoclonal antibody conjugated to Biotin which recognizes IgG2b that belongs to many immunoglobulin G. It can be used as a negative control, to distinguish specific from non-specific binding of mouse IgG2b fluorochrome-conjugated antibodies to human cells. It was found that IgG2a was superior to IgG1 in activating complement. IgG2 is an antibody molecule induced by infection.
<b>Clonality</b>	Monoclonal
<b>Isotype</b>	Mouse IgG2b kappa
<b>Conjugation</b>	Biotin
<b>Concentration</b>	1 mg/ml
<b>Buffer/Preservatives</b>	Phosphate buffered saline (PBS), pH 7.4, 15 mM sodium azide
<b>Purification</b>	Purified antibody is conjugated with biotin LC-NHS ester under optimum conditions and unconjugated antibody and free biotin are removed by size-exclusion chromatography.
<b>Immunogen</b>	KLH-coupled trinitrophenol
<b>Tested applications</b>	ELISA, FC, ICC, IHC-Fr, IHC-P, IP, WB

**Biorbyt Ltd.**

7 Signet Court, Swann Road  
Cambridge  
CB5 8LA  
United Kingdom

Email: [info@biorbyt.com](mailto:info@biorbyt.com), [support@biorbyt.com](mailto:support@biorbyt.com)  
Phone: [+44 \(0\)1223 859353](tel:+44(0)1223859353) | Fax: [+1 \(415\) 651-8558](tel:+1(415)651-8558)

**Biorbyt LLC**

68 TW Alexander Drive  
Research Triangle Park  
Durham  
NC 27713  
United States

Email: [info@biorbyt.com](mailto:info@biorbyt.com), [support@biorbyt.com](mailto:support@biorbyt.com)  
Phone: [+1 \(415\) 906-5211](tel:+1(415)906-5211) | Fax: [+1 \(415\) 651-8558](tel:+1(415)651-8558)

**Application notes**

Negative control: The reagent is intended as an isotype control to establish the amount of non-specific antibody binding. For your particular experiment, use the same concentration of this control antibody as the recommended working concentration of the antigen-specific antibody. Also, when working with prediluted antibodies, dilute the isotype control to the same concentration as is the concentration of the antigen-specific antibody in the prediluted antibody solution you are using. If under particular experimental conditions the background signal of the isotype control is too high (usually when working concentrations of used antibodies are above 10 µg/ml of incubation mixture), change the conditions of your experiment to reduce the background.

**Specificity**

This mouse IgG2b (kappa) monoclonal antibody (clone MPC-11) reacts with an epitope irrelevant for a variety of resting, activated, live, and fixed human, mouse, and rat tissues.

**Antibody Type**

Secondary Antibody

**Clone Number**

MPC-11

**Storage**

Store at 2-8°C. Do not freeze.

**Note**

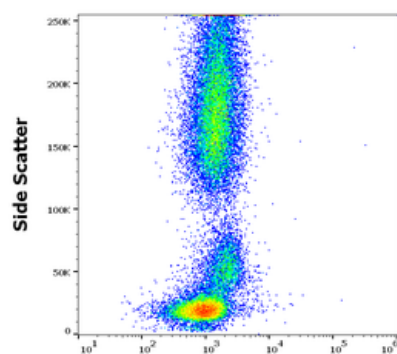
For research use only

**Entrez**

**35**

**Expiration Date**

12 months from date of receipt.



Mouse IgG2b Isotype Control biotin / Streptavidin APC

Flow cytometry surface nonspecific staining pattern of human peripheral whole blood stained using mouse IgG2b Isotype control (MPC-11) Biotin antibody (concentration in sample 9 µg/ml).

**Biorbyt Ltd.**

7 Signet Court, Swann Road  
Cambridge  
CB5 8LA  
United Kingdom

Email: [info@biorbyt.com](mailto:info@biorbyt.com), [support@biorbyt.com](mailto:support@biorbyt.com)

Phone: +44 (0)1223 859353 | Fax: +1 (415) 651-8558

**Biorbyt LLC**

68 TW Alexander Drive  
Research Triangle Park  
Durham  
NC 27713  
United States

Email: [info@biorbyt.com](mailto:info@biorbyt.com), [support@biorbyt.com](mailto:support@biorbyt.com)

Phone: +1 (415) 906-5211 | Fax: +1 (415) 651-8558