

Product Datasheet

Mouse IgG2b Isotype Control Purified Antibody (orb154399)

Catalog Number	orb154399
Category	Antibodies
Description	Mouse antibody to IgG2b which belongs to many immunoglobulin G. It can be used as a negative control, to distinguish specific from non-specific binding of mouse IgG2b fluorochrome-conjugated antibodies to human cells. It was found that IgG2a was superior to IgG1 in activating complement. IgG2 is an antibody molecule induced by infection.
Clonality	Monoclonal
Isotype	Mouse IgG2b kappa
Conjugation	Unconjugated
Concentration	1 mg/ml
Buffer/Preservatives	Phosphate buffered saline (PBS), pH 7.4, 15 mM sodium azide
Purification	Purified by protein-A affinity chromatography.
Immunogen	KLH-coupled trinitrophenol
Tested applications	ELISA, FC, ICC, IHC-Fr, IHC-P, IP, WB

Biorbyt Ltd.

7 Signet Court, Swann Road
Cambridge
CB5 8LA
United Kingdom

Email: info@biorbyt.com, support@biorbyt.com
Phone: [+44 \(0\)1223 859353](tel:+44(0)1223859353) | Fax: [+1 \(415\) 651-8558](tel:+1(415)651-8558)

Biorbyt LLC

68 TW Alexander Drive
Research Triangle Park
Durham
NC 27713-2847
United States

Email: info@biorbyt.com, support@biorbyt.com
Phone: [+1 \(415\) 906-5211](tel:+1(415)906-5211) | Fax: [+1 \(415\) 651-8558](tel:+1(415)651-8558)

Application notes

Negative control: The reagent is intended as an isotype control to establish the amount of non-specific antibody binding. For your particular experiment, use the same concentration of this control antibody as the recommended working concentration of the antigen-specific antibody. Also, when working with prediluted antibodies, dilute the isotype control to the same concentration as is the concentration of the antigen-specific antibody in the prediluted antibody solution you are using. If under particular experimental conditions the background signal of the isotype control is too high (usually when working concentrations of used antibodies are above 10 µg/ml of incubation mixture), change the conditions of your experiment to reduce the background.

Specificity

This mouse IgG2b (kappa) monoclonal antibody (clone MPC-11) reacts with an epitope irrelevant for a variety of resting, activated, live, and fixed human, mouse, and rat tissues.

Antibody Type

Secondary Antibody

Clone Number

MPC-11

Storage

Maintain refrigerated at 2-8°C for up to 2 weeks. For long term storage store at -20°C in small aliquots to prevent freeze-thaw cycles.

Note

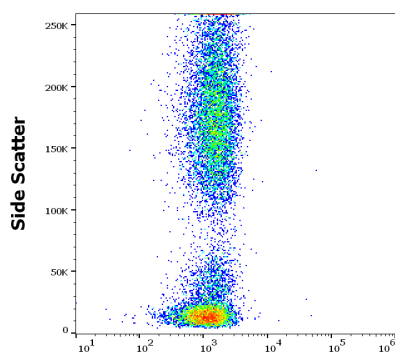
For research use only

Entrez

35

Expiration Date

12 months from date of receipt.



Mouse IgG2b Isotype Control (purified) / GAM APC

Flow cytometry surface nonspecific staining pattern of human peripheral whole blood stained using mouse IgG2b Isotype control (MPC-11) purified antibody (concentration in sample 2 µg/ml).

Biorbyt Ltd.

7 Signet Court, Swann Road
Cambridge
CB5 8LA
United Kingdom

Email: info@biorbyt.com, support@biorbyt.com

Phone: +44 (0)1223 859353 | Fax: +1 (415) 651-8558

Biorbyt LLC

68 TW Alexander Drive
Research Triangle Park
Durham
NC 27713-2847
United States

Email: info@biorbyt.com, support@biorbyt.com

Phone: +1 (415) 906-5211 | Fax: +1 (415) 651-8558