

Product Datasheet

CSE1L Antibody (orb1539026)

Catalog Number	orb1539026
Category	Antibodies
Description	CSE1L Antibody
Target	CSE1L
Clonality	Polyclonal
Species/Host	Rabbit
Isotype	IgG
Conjugation	Unconjugated
Reactivity	Human
Concentration	1 mg/ml
Buffer/Preservatives	PBS (without Mg ²⁺ , Ca ²⁺), pH 7.4, 150 mM NaCl, 0.02% Sodium Azide, 50% Glycerol
Purification	Immunoaffinity purified
Immunogen	Synthetic peptide from human CSE1L. (AA Range: 1-50)
Tested applications	ELISA, IF, IHC, IHC-P, IP, WB
Dilution range	IF (1:100 - 1:500), IHC, IHC-P (1:100), IP, Peptide-ELISA (1:40000), WB (1:500 - 1:1000)
Application notes	Further information: Western Blot: Predicted MW 110 kDa
Specificity	CSE1L Antibody detects endogenous levels of total CSE1L protein.

Biorbyt Ltd.

7 Signet Court, Swann Road
Cambridge
CB5 8LA
United Kingdom

Email: info@biorbyt.com, support@biorbyt.com

Phone: [+44 \(0\)1223 859353](tel:+44(0)1223859353) | Fax: [+1 \(415\) 651-8558](tel:+1(415)651-8558)

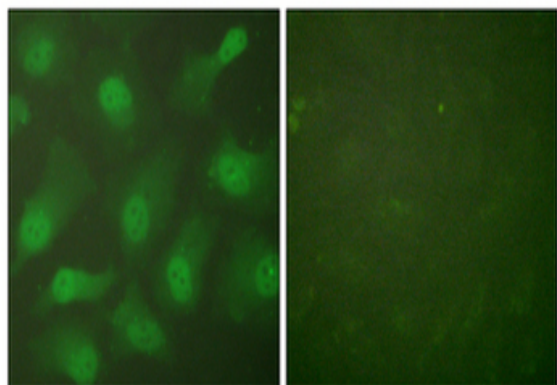
Biorbyt LLC

68 TW Alexander Drive
Research Triangle Park
Durham
NC 27713
United States

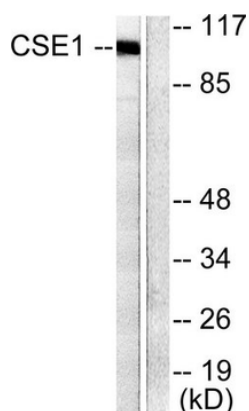
Email: info@biorbyt.com, support@biorbyt.com

Phone: [+1 \(415\) 906-5211](tel:+1(415)906-5211) | Fax: [+1 \(415\) 651-8558](tel:+1(415)651-8558)

Storage	Maintain refrigerated at 2-8°C for up to 2 weeks. For long term storage store at -20°C in small aliquots to prevent freeze-thaw cycles.
Note	For research use only
Expiration Date	12 months from date of receipt.



Immunofluorescence analysis of HeLa cells, using CSE1L Antibody. The picture on the right is blocked with the synthesized peptide.



Western blot analysis of lysates from 293 cells, using CSE1L Antibody. The lane on the right is blocked with the synthesized peptide.

Biorbyt Ltd.

7 Signet Court, Swann Road
Cambridge
CB5 8LA
United Kingdom

Email: info@biorbyt.com, support@biorbyt.com

Phone: [+44 \(0\)1223 859353](tel:+44(0)1223859353) | Fax: [+1 \(415\) 651-8558](tel:+1(415)651-8558)

Biorbyt LLC

68 TW Alexander Drive
Research Triangle Park
Durham
NC 27713
United States

Email: info@biorbyt.com, support@biorbyt.com

Phone: [+1 \(415\) 906-5211](tel:+1(415)906-5211) | Fax: [+1 \(415\) 651-8558](tel:+1(415)651-8558)