

Product Datasheet

NTSR1/NTR Antibody (orb1538513)

Catalog Number	orb1538513
Category	Antibodies
Description	NTSR1/NTR Antibody
Target	NTSR1 / NTR
Clonality	Polyclonal
Species/Host	Rabbit
Isotype	IgG
Conjugation	Unconjugated
Reactivity	Human, Mouse
Concentration	1 mg/ml
Buffer/Preservatives	PBS (without Mg ²⁺ , Ca ²⁺), pH 7.4, 150 mM NaCl, 0.02% Sodium Azide, 50% Glycerol
Purification	Immunoaffinity purified
Immunogen	Synthetic peptide from human NTR1. (AA Range: 181-230)
Tested applications	ELISA, IHC, IHC-P, WB
Dilution range	IHC, IHC-P (1:200), Peptide-ELISA (1:1000), WB (1:500 - 1:1000)
Application notes	Further information: Western Blot: Predicted MW 46 kDa
Specificity	NTR1 Antibody detects endogenous levels of total NTR1 protein.

Biorbyt Ltd.

7 Signet Court, Swann Road
Cambridge
CB5 8LA
United Kingdom

Email: info@biorbyt.com, support@biorbyt.com

Phone: [+44 \(0\)1223 859353](tel:+44(0)1223859353) | Fax: [+1 \(415\) 651-8558](tel:+1(415)651-8558)

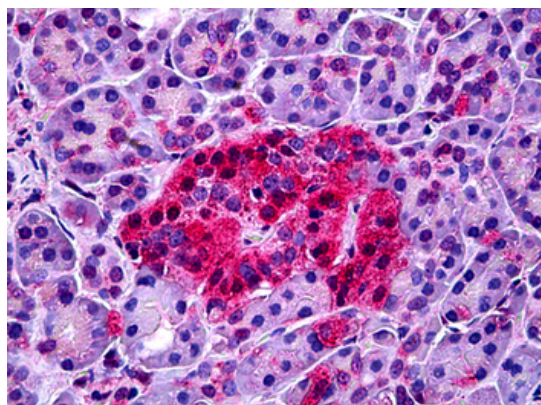
Biorbyt LLC

68 TW Alexander Drive
Research Triangle Park
Durham
NC 27713
United States

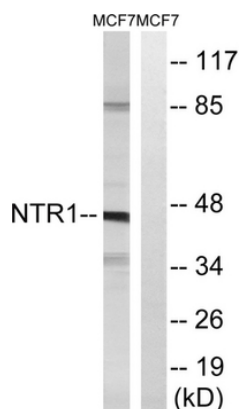
Email: info@biorbyt.com, support@biorbyt.com

Phone: [+1 \(415\) 906-5211](tel:+1(415)906-5211) | Fax: [+1 \(415\) 651-8558](tel:+1(415)651-8558)

Storage	Maintain refrigerated at 2-8°C for up to 2 weeks. For long term storage store at -20°C in small aliquots to prevent freeze-thaw cycles.
Note	For research use only
Expiration Date	12 months from date of receipt.



Anti-NTSR1 antibody IHC of human pancreas. Immunohistochemistry of formalin-fixed, paraffin-embedded tissue after heat-induced antigen retrieval. Antibody dilution 1:200.



Western blot analysis of lysates from MCF7 cells, using NTR1 Antibody. The lane on the right is blocked with the synthesized peptide.

Biorbyt Ltd.

7 Signet Court, Swann Road
Cambridge
CB5 8LA
United Kingdom

Email: info@biorbyt.com, support@biorbyt.com
Phone: +44 (0)1223 859353 | Fax: +1 (415) 651-8558

Biorbyt LLC

68 TW Alexander Drive
Research Triangle Park
Durham
NC 27713
United States

Email: info@biorbyt.com, support@biorbyt.com
Phone: +1 (415) 906-5211 | Fax: +1 (415) 651-8558