

Product Datasheet

NEDL2/HECW2 Antibody (orb1537028)

Catalog Number	orb1537028
Category	Antibodies
Description	NEDL2/HECW2 Antibody
Target	NEDL2 / HECW2
Clonality	Polyclonal
Species/Host	Rabbit
Conjugation	Unconjugated
Reactivity	Human, Mouse
Concentration	1 mg/ml
Buffer/Preservatives	PBS, pH 7.3, 0.01% Sodium Azide, 30% Glycerol
Purification	Immunoaffinity purified
Immunogen	KLH-conjugated synthetic peptide encompassing a sequence within the central region of human HECW2.
Tested applications	ICC, IF, IHC-P, WB
Dilution range	ICC (1:100 - 1:500), IF, IHC-P (1:100), WB (1:500 - 1:1000)
Specificity	Recognizes endogenous levels of HECW2 protein.
Storage	Maintain refrigerated at 2-8°C for up to 2 weeks. For long term storage store at -20°C in small aliquots to prevent freeze-thaw cycles.
Note	For research use only

Biorbyt Ltd.

7 Signet Court, Swann Road
Cambridge
CB5 8LA
United Kingdom

Email: info@biorbyt.com, support@biorbyt.com

Phone: [+44 \(0\)1223 859353](tel:+44(0)1223859353) | Fax: [+1 \(415\) 651-8558](tel:+1(415)651-8558)

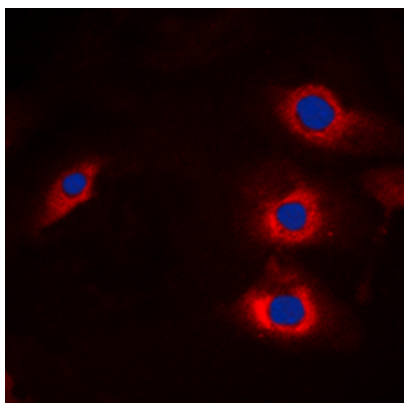
Biorbyt LLC

68 TW Alexander Drive
Research Triangle Park
Durham
NC 27713-2847
United States

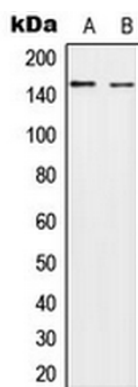
Email: info@biorbyt.com, support@biorbyt.com

Phone: [+1 \(415\) 906-5211](tel:+1(415)906-5211) | Fax: [+1 \(415\) 651-8558](tel:+1(415)651-8558)

Expiration Date 12 months from date of receipt.



Immunofluorescent analysis of HECW2 staining in A549 cells.



Western blot analysis of HECW2 expression in A549 (A); NIH3T3 (B) whole cell lysates.

Biorbyt Ltd.

7 Signet Court, Swann Road
Cambridge
CB5 8LA
United Kingdom

Email: info@biorbyt.com, support@biorbyt.com

Phone: [+44 \(0\)1223 859353](tel:+44(0)1223859353) | Fax: [+1 \(415\) 651-8558](tel:+1(415)651-8558)

Biorbyt LLC

68 TW Alexander Drive
Research Triangle Park
Durham
NC 27713-2847
United States

Email: info@biorbyt.com, support@biorbyt.com

Phone: [+1 \(415\) 906-5211](tel:+1(415)906-5211) | Fax: [+1 \(415\) 651-8558](tel:+1(415)651-8558)