

Product Datasheet

KLK5/Kallikrein 5 Antibody (orb1536709)

Catalog Number	orb1536709
Category	Antibodies
Description	KLK5/Kallikrein 5 Antibody
Target	KLK5 / Kallikrein 5
Clonality	Polyclonal
Species/Host	Rabbit
Isotype	IgG
Conjugation	Unconjugated
Reactivity	Human, Mouse, Rat
Concentration	3.29 mg/ml
Buffer/Preservatives	PBS, pH 7.3, 0.02% Sodium Azide, 50% Glycerol
Purification	Affinity purified
Immunogen	A synthetic peptide of human KLK5.
Tested applications	IHC, IHC-P, WB
Dilution range	IHC, IHC-P (1:100 - 1:200), WB (1:500 - 1:2000)
Application notes	Further information: The predicted MW is 32kDa, while the observed MW by Western blot was 32kDa.
Specificity	Human KLK5 / Kallikrein 5

Biorbyt Ltd.

7 Signet Court, Swann Road
Cambridge
CB5 8LA
United Kingdom

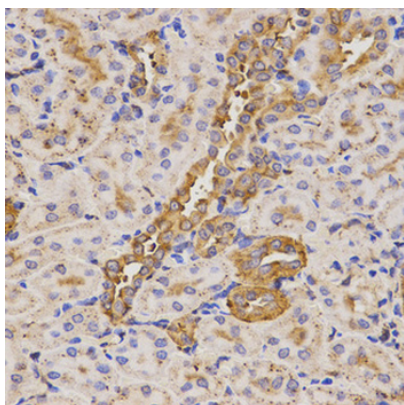
Email: info@biorbyt.com, support@biorbyt.com
Phone: [+44 \(0\)1223 859353](tel:+44(0)1223859353) | Fax: [+1 \(415\) 651-8558](tel:+1(415)651-8558)

Biorbyt LLC

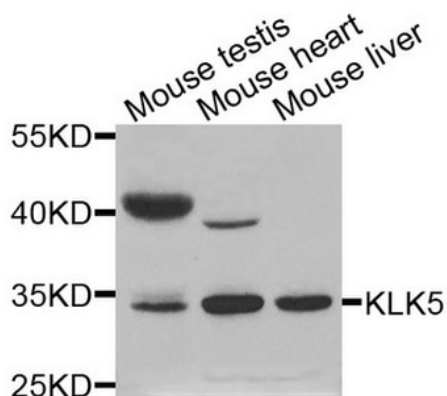
68 TW Alexander Drive
Research Triangle Park
Durham
NC 27713
United States

Email: info@biorbyt.com, support@biorbyt.com
Phone: [+1 \(415\) 906-5211](tel:+1(415)906-5211) | Fax: [+1 \(415\) 651-8558](tel:+1(415)651-8558)

Storage	Maintain refrigerated at 2-8°C for up to 2 weeks. For long term storage store at -20°C in small aliquots to prevent freeze-thaw cycles.
Note	For research use only
Expiration Date	12 months from date of receipt.



Immunohistochemistry of paraffin-embedded rat kidney tissue, at a dilution of 1:200.



Western blot analysis of extracts of various cells.

Biorbyt Ltd.

7 Signet Court, Swann Road
Cambridge
CB5 8LA
United Kingdom

Email: info@biorbyt.com, support@biorbyt.com

Phone: +44 (0)1223 859353 | Fax: +1 (415) 651-8558

Biorbyt LLC

68 TW Alexander Drive
Research Triangle Park
Durham
NC 27713
United States

Email: info@biorbyt.com, support@biorbyt.com

Phone: +1 (415) 906-5211 | Fax: +1 (415) 651-8558