

Product Datasheet

S1PR4/SIP4/EDG6 Antibody (orb1536192)

Catalog Number	orb1536192
Category	Antibodies
Description	S1PR4/SIP4/EDG6 Antibody
Target	S1PR4 / SIP4 / EDG6
Clonality	Polyclonal
Species/Host	Rabbit
Isotype	IgG
Conjugation	Unconjugated
Reactivity	Human, Mouse
Concentration	0.4 mg/ml
Buffer/Preservatives	PBS, pH 7.4, 0.05% Sodium Azide, 50% Glycerol
Purification	Affinity purification
Immunogen	Synthetic peptide of human S1PR4
Tested applications	ELISA, IHC, IHC-P, WB
Dilution range	ELISA, IHC (1:40), IHC-P (1:100), WB (1:500 - 1:2000)
Specificity	Human S1PR4 / SIP4 / EDG6.
Storage	Maintain refrigerated at 2-8°C for up to 2 weeks. For long term storage store at -20°C in small aliquots to prevent freeze-thaw cycles.

Biorbyt Ltd.

7 Signet Court, Swann Road
Cambridge
CB5 8LA
United Kingdom

Email: info@biorbyt.com, support@biorbyt.com

Phone: [+44 \(0\)1223 859353](tel:+44(0)1223859353) | Fax: [+1 \(415\) 651-8558](tel:+1(415)6518558)

Biorbyt LLC

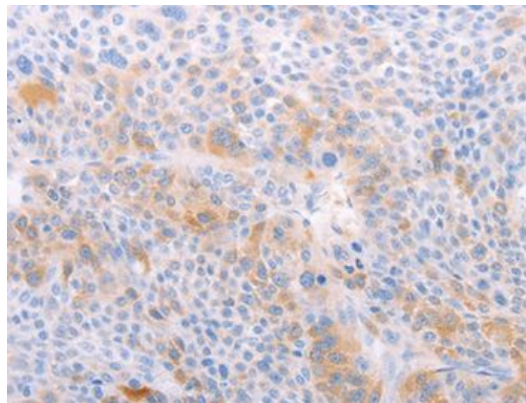
68 TW Alexander Drive
Research Triangle Park
Durham
NC 27713
United States

Email: info@biorbyt.com, support@biorbyt.com

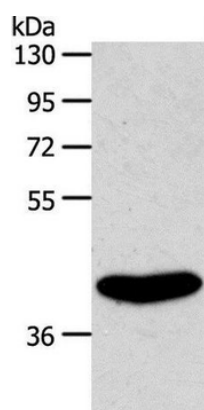
Phone: [+1 \(415\) 906-5211](tel:+1(415)9065211) | Fax: [+1 \(415\) 651-8558](tel:+1(415)6518558)

Note For research use only

Expiration Date 12 months from date of receipt.



Immunohistochemistry of paraffin-embedded Human liver cancer using S1PR4 Polyclonal Antibody at dilution of 1:40.



Western blot analysis of Rat kidney tissue, using S1PR4 Polyclonal Antibody at dilution of 1:800.

Biorbyt Ltd.

7 Signet Court, Swann Road
Cambridge
CB5 8LA
United Kingdom

Email: info@biorbyt.com, support@biorbyt.com

Phone: +44 (0)1223 859353 | Fax: +1 (415) 651-8558

Biorbyt LLC

68 TW Alexander Drive
Research Triangle Park
Durham
NC 27713
United States

Email: info@biorbyt.com, support@biorbyt.com

Phone: +1 (415) 906-5211 | Fax: +1 (415) 651-8558