

Product Datasheet

SMCO1 Antibody (orb1535612)

Catalog Number	orb1535612
Category	Antibodies
Description	SMCO1 Antibody
Target	SMCO1
Clonality	Monoclonal
Species/Host	Mouse
Isotype	IgG1
Conjugation	Unconjugated
Reactivity	Human
Concentration	1 mg/ml
Buffer/Preservatives	PBS, pH 7.3, 0.02% Sodium Azide, 50% Glycerol, 1% rAlbumin
Purification	Immunoaffinity purified from tissue culture supernatant
Immunogen	Full length human recombinant protein of human C3orf43 (NP_001071125) produced in E. coli.
Tested applications	IHC, IHC-P, WB
Dilution range	IHC, IHC-P (10 µg/ml), WB (1:2000)
Specificity	Human SMCO1
Clone Number	1H6

Biorbyt Ltd.

7 Signet Court, Swann Road
Cambridge
CB5 8LA
United Kingdom

Email: info@biorbyt.com, support@biorbyt.com

Phone: [+44 \(0\)1223 859353](tel:+44(0)1223859353) | Fax: [+1 \(415\) 651-8558](tel:+1(415)651-8558)

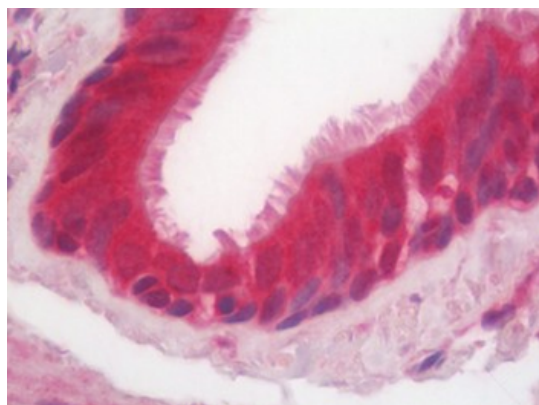
Biorbyt LLC

68 TW Alexander Drive
Research Triangle Park
Durham
NC 27713-2847
United States

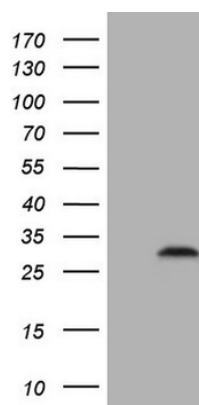
Email: info@biorbyt.com, support@biorbyt.com

Phone: [+1 \(415\) 906-5211](tel:+1(415)906-5211) | Fax: [+1 \(415\) 651-8558](tel:+1(415)651-8558)

Storage	Maintain refrigerated at 2-8°C for up to 2 weeks. For long term storage store at -20°C in small aliquots to prevent freeze-thaw cycles.
Note	For research use only
Expiration Date	12 months from date of receipt.



Human Lung: Formalin-Fixed, Paraffin-Embedded (FFPE)



HEK293T cells were transfected with the pCMV6-ENTRY control (Left lane) or pCMV6-ENTRY C3orf43 (Right lane) cDNA for 48 hrs and lysed.

Biorbyt Ltd.

7 Signet Court, Swann Road
Cambridge
CB5 8LA
United Kingdom

Email: info@biorbyt.com, support@biorbyt.com

Phone: +44 (0)1223 859353 | Fax: +1 (415) 651-8558

Biorbyt LLC

68 TW Alexander Drive
Research Triangle Park
Durham
NC 27713-2847
United States

Email: info@biorbyt.com, support@biorbyt.com

Phone: +1 (415) 906-5211 | Fax: +1 (415) 651-8558