

## Product Datasheet

### GABARAPL2/ATG8 Antibody (orb1535513)

<b>Catalog Number</b>	orb1535513
<b>Category</b>	Antibodies
<b>Description</b>	GABARAPL2/ATG8 Antibody
<b>Target</b>	GABARAPL2 / ATG8
<b>Clonality</b>	Polyclonal
<b>Species/Host</b>	Rabbit
<b>Isotype</b>	IgG
<b>Conjugation</b>	Unconjugated
<b>Reactivity</b>	Human, Mouse, Rat
<b>Concentration</b>	1 mg/ml
<b>Buffer/Preservatives</b>	PBS containing 0.02% Sodium Azide
<b>Purification</b>	Peptide Column Affinity Chromatography
<b>Immunogen</b>	A 15 AA peptide near the C-Terminus of human GABARAPL2. The immunogen is located within the last 50 AA of GABARAPL2.
<b>Tested applications</b>	ELISA, IF, IHC, IHC-P, WB
<b>Dilution range</b>	ELISA, IF (20 µg/ml), IHC, IHC-P (10 µg/ml), WB (1 - 2 µg/ml)

**Biorbyt Ltd.**

7 Signet Court, Swann Road  
Cambridge  
CB5 8LA  
United Kingdom

Email: [info@biorbyt.com](mailto:info@biorbyt.com), [support@biorbyt.com](mailto:support@biorbyt.com)

Phone: [+44 \(0\)1223 859353](tel:+44(0)1223859353) | Fax: [+1 \(415\) 651-8558](tel:+1(415)651-8558)

**Biorbyt LLC**

68 TW Alexander Drive  
Research Triangle Park  
Durham  
NC 27713  
United States

Email: [info@biorbyt.com](mailto:info@biorbyt.com), [support@biorbyt.com](mailto:support@biorbyt.com)

Phone: [+1 \(415\) 906-5211](tel:+1(415)906-5211) | Fax: [+1 \(415\) 651-8558](tel:+1(415)651-8558)

**Application notes**

Further information: GABARAPL2 antibody can be used for detection of GABARAPL2 by Western blot at 1 - 2 ug/ml. Antibody can also be used for Immunohistochemistry at 5 ug/mL. For Immunofluorescence start at 20 ug/mL. Antibody validated: Western Blot in human samples; Immunohistochemistry in mouse and rat samples and Immunofluorescence in mouse and rat samples. All other applications and species not yet tested. Western Blot: Predicted: 13 kDa Observed: 13 kDa

**Specificity**

GABARAPL2 antibody is human, mouse and rat reactive. Multiple isoforms of GABARAPL2 are known to exist.

**Storage**

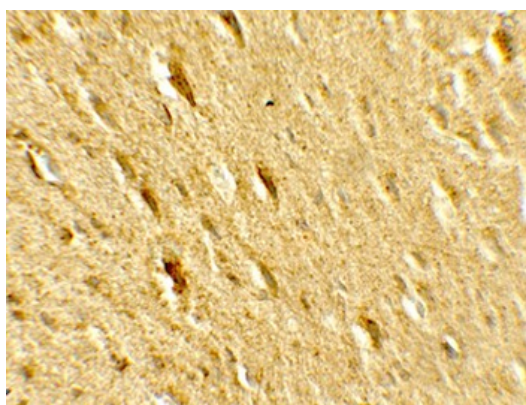
Maintain refrigerated at 2-8°C for up to 2 weeks. For long term storage store at -20°C in small aliquots to prevent freeze-thaw cycles.

**Note**

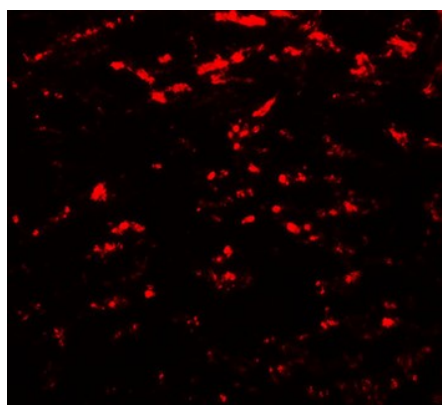
For research use only

**Expiration Date**

12 months from date of receipt.



Immunohistochemistry of GABARAPL2 in rat brain tissue with GABARAPL2 antibody at 5 ug/ml.



Immunofluorescence of GABARAPL2 in rat brain tissue with GABARAPL2 antibody at 20 ug/ml.

**Biorbyt Ltd.**

7 Signet Court, Swann Road  
Cambridge  
CB5 8LA  
United Kingdom

Email: [info@biorbyt.com](mailto:info@biorbyt.com), [support@biorbyt.com](mailto:support@biorbyt.com)

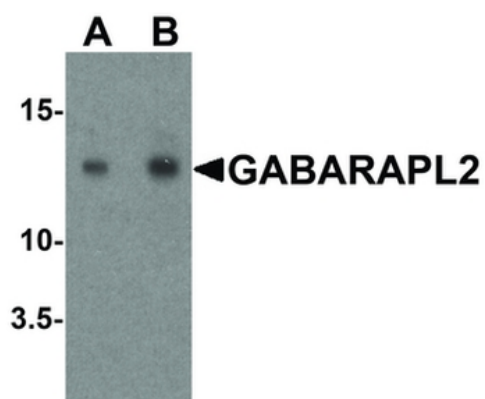
Phone: [+44 \(0\)1223 859353](tel:+44(0)1223859353) | Fax: [+1 \(415\) 651-8558](tel:+1(415)651-8558)

**Biorbyt LLC**

68 TW Alexander Drive  
Research Triangle Park  
Durham  
NC 27713  
United States

Email: [info@biorbyt.com](mailto:info@biorbyt.com), [support@biorbyt.com](mailto:support@biorbyt.com)

Phone: [+1 \(415\) 906-5211](tel:+1(415)906-5211) | Fax: [+1 \(415\) 651-8558](tel:+1(415)651-8558)



Western blot analysis of GABARAPL2 in human brain tissue lysate with GABARAPL2 antibody at (A) 1 and (B) 2 ug/ml.

**Biorbyt Ltd.**

7 Signet Court, Swann Road  
Cambridge  
CB5 8LA  
United Kingdom

Email: [info@biorbyt.com](mailto:info@biorbyt.com), [support@biorbyt.com](mailto:support@biorbyt.com)

Phone: [+44 \(0\)1223 859353](tel:+44(0)1223859353) | Fax: [+1 \(415\) 651-8558](tel:+1(415)651-8558)

**Biorbyt LLC**

68 TW Alexander Drive  
Research Triangle Park  
Durham  
NC 27713  
United States

Email: [info@biorbyt.com](mailto:info@biorbyt.com), [support@biorbyt.com](mailto:support@biorbyt.com)

Phone: [+1 \(415\) 906-5211](tel:+1(415)906-5211) | Fax: [+1 \(415\) 651-8558](tel:+1(415)651-8558)