

Product Datasheet

CCBL1 Antibody (orb1535419)

Catalog Number	orb1535419
Category	Antibodies
Description	CCBL1 Antibody
Target	CCBL1
Clonality	Monoclonal
Species/Host	Mouse
Isotype	IgG2a,k
Conjugation	Unconjugated
Reactivity	Human
Concentration	1 mg/ml
Buffer/Preservatives	PBS, pH 7.4
Purification	Purified from ascites by Protein A
Immunogen	CCBL1 (AAH33685, aa 1-374). A full-length recombinant protein with GST tag. MW of the GST tag alone is 26 KDa.
Tested applications	ELISA, IF, IHC, IHC-P, WB
Dilution range	ELISA, IF (10 µg/ml), IHC, IHC-P (10 µg/ml), WB
Application notes	Further information: Sandwich ELISA: Recombinant protein. Western Blot: Transfected lysate, Recombinant protein.
Specificity	Human CCBL1 / KAT1

Biorbyt Ltd.

7 Signet Court, Swann Road
Cambridge
CB5 8LA
United Kingdom

Email: info@biorbyt.com, support@biorbyt.com

Phone: [+44 \(0\)1223 859353](tel:+44(0)1223859353) | Fax: [+1 \(415\) 651-8558](tel:+1(415)651-8558)

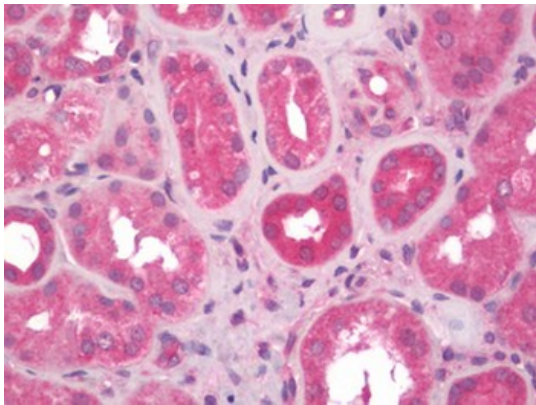
Biorbyt LLC

68 TW Alexander Drive
Research Triangle Park
Durham
NC 27713-2847
United States

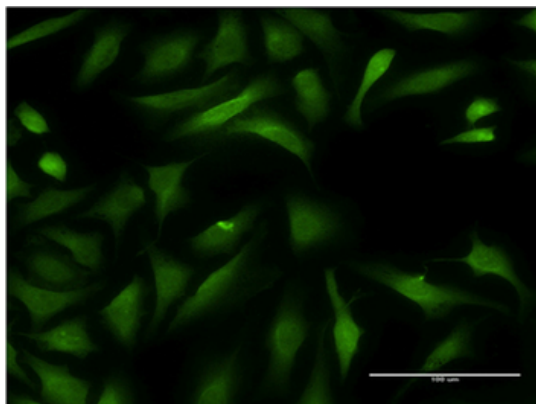
Email: info@biorbyt.com, support@biorbyt.com

Phone: [+1 \(415\) 906-5211](tel:+1(415)906-5211) | Fax: [+1 \(415\) 651-8558](tel:+1(415)651-8558)

Clone Number	1B12
Storage	Maintain refrigerated at 2-8°C for up to 2 weeks. For long term storage store at -20°C in small aliquots to prevent freeze-thaw cycles.
Note	For research use only
Expiration Date	12 months from date of receipt.



Human Kidney: Formalin-Fixed, Paraffin-Embedded (FFPE)



Immunofluorescence of monoclonal antibody to CCBL1 on HeLa cell. [antibody concentration 10 ug/ml]

Biorbyt Ltd.

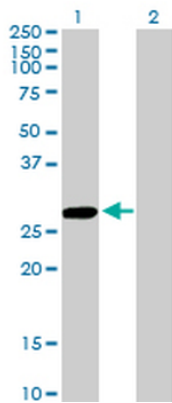
7 Signet Court, Swann Road
Cambridge
CB5 8LA
United Kingdom

Email: info@biorbyt.com, support@biorbyt.com
Phone: [+44 \(0\)1223 859353](tel:+44(0)1223859353) | Fax: [+1 \(415\) 651-8558](tel:+1(415)651-8558)

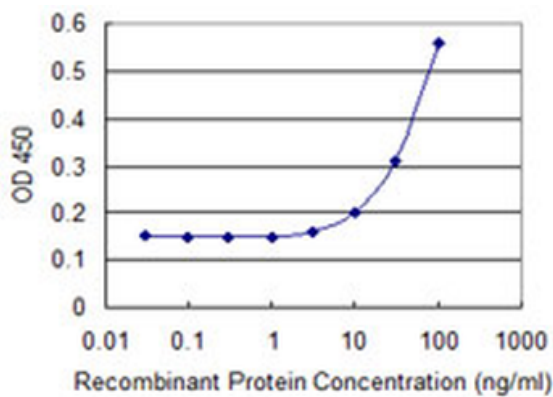
Biorbyt LLC

68 TW Alexander Drive
Research Triangle Park
Durham
NC 27713-2847
United States

Email: info@biorbyt.com, support@biorbyt.com
Phone: [+1 \(415\) 906-5211](tel:+1(415)906-5211) | Fax: [+1 \(415\) 651-8558](tel:+1(415)651-8558)



Western Blot analysis of CCBL1 expression in transfected 293T cell line by CCBL1 monoclonal antibody (M02), clone 1B12. Lane 1: CCBL1 transfected lysate (27.4 KDa). Lane 2: Non-transfected lysate.



Detection limit for recombinant GST tagged CCBL1 is 3 ng/ml as a capture antibody.

Biorbyt Ltd.

7 Signet Court, Swann Road
Cambridge
CB5 8LA
United Kingdom

Email: info@biorbyt.com, support@biorbyt.com

Phone: +44 (0)1223 859353 | Fax: +1 (415) 651-8558

Biorbyt LLC

68 TW Alexander Drive
Research Triangle Park
Durham
NC 27713-2847
United States

Email: info@biorbyt.com, support@biorbyt.com

Phone: +1 (415) 906-5211 | Fax: +1 (415) 651-8558