

## Product Datasheet

### GRM3/MGLUR3 Antibody (orb1533915)

<b>Catalog Number</b>	orb1533915
<b>Category</b>	Antibodies
<b>Description</b>	GRM3/MGLUR3 Antibody
<b>Target</b>	GRM3 / MGLUR3
<b>Clonality</b>	Polyclonal
<b>Species/Host</b>	Rabbit
<b>Conjugation</b>	Unconjugated
<b>Reactivity</b>	Bovine, Equine, Human, Monkey, Porcine
<b>Concentration</b>	1 mg/ml
<b>Buffer/Preservatives</b>	PBS, 0.1% Sodium Azide
<b>Purification</b>	Immunoaffinity purified
<b>Immunogen</b>	Synthetic 16 amino acid peptide from N-Terminus extracellular domain of human GRM3 / MGLUR3. Percent identity with other species by BLAST analysis: Human, Gorilla, Orangutan, Gibbon, Monkey, Marmoset, Elephant, Panda, Bovine, Horse, Pig, Opossum (100%); Mouse, Rat, Rabbit (94%); Turkey, Chicken, Xenopus (81%).
<b>Tested applications</b>	ICC, IHC, IHC-P, WB
<b>Dilution range</b>	ICC, IHC, IHC-P (5 - 10 µg/ml), WB
<b>Specificity</b>	Human GRM3 / MGLUR3. BLAST analysis of the peptide immunogen showed no homology with other human proteins.

**Biorbyt Ltd.**

7 Signet Court, Swann Road  
Cambridge  
CB5 8LA  
United Kingdom

Email: [info@biorbyt.com](mailto:info@biorbyt.com), [support@biorbyt.com](mailto:support@biorbyt.com)

Phone: [+44 \(0\)1223 859353](tel:+44(0)1223859353) | Fax: [+1 \(415\) 651-8558](tel:+1(415)651-8558)

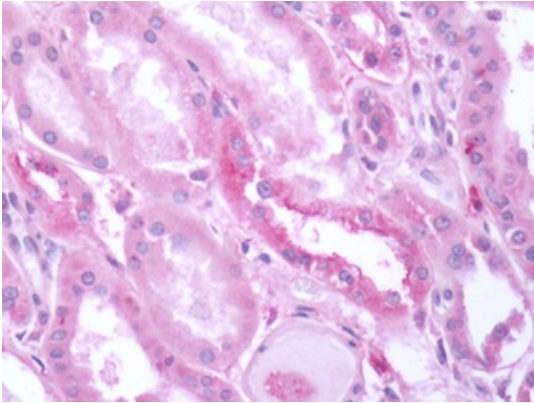
**Biorbyt LLC**

68 TW Alexander Drive  
Research Triangle Park  
Durham  
NC 27713-2847  
United States

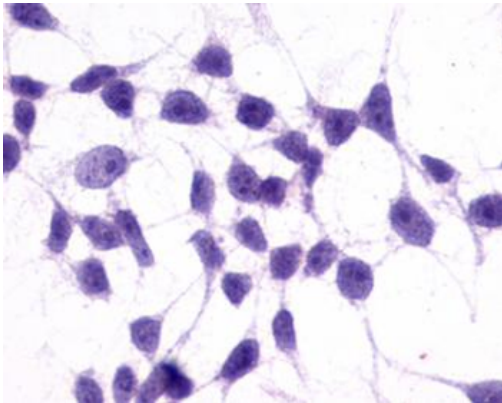
Email: [info@biorbyt.com](mailto:info@biorbyt.com), [support@biorbyt.com](mailto:support@biorbyt.com)

Phone: [+1 \(415\) 906-5211](tel:+1(415)906-5211) | Fax: [+1 \(415\) 651-8558](tel:+1(415)651-8558)

<b>Storage</b>	Maintain refrigerated at 2-8°C for up to 2 weeks. For long term storage store at -20°C in small aliquots to prevent freeze-thaw cycles.
<b>Note</b>	For research use only
<b>Expiration Date</b>	12 months from date of receipt.



Human Kidney: Formalin-Fixed, Paraffin-Embedded (FFPE)



Anti-GRM3 / MGLUR3 antibody immunocytochemistry (ICC) staining of untransfected HEK293 human embryonic kidney cells.

**Biorbyt Ltd.**

7 Signet Court, Swann Road  
Cambridge  
CB5 8LA  
United Kingdom

Email: [info@biorbyt.com](mailto:info@biorbyt.com), [support@biorbyt.com](mailto:support@biorbyt.com)

Phone: [+44 \(0\)1223 859353](tel:+44(0)1223859353) | Fax: [+1 \(415\) 651-8558](tel:+1(415)651-8558)

**Biorbyt LLC**

68 TW Alexander Drive  
Research Triangle Park  
Durham  
NC 27713-2847  
United States

Email: [info@biorbyt.com](mailto:info@biorbyt.com), [support@biorbyt.com](mailto:support@biorbyt.com)

Phone: [+1 \(415\) 906-5211](tel:+1(415)906-5211) | Fax: [+1 \(415\) 651-8558](tel:+1(415)651-8558)