

## Product Datasheet

### Rab27 Antibody (orb153353)

<b>Catalog Number</b>	orb153353
<b>Category</b>	Antibodies
<b>Description</b>	Goat polyclonal antibody to mouse Rab27. Rab27 belongs to the small GTPase superfamily, Rab family. The protein is membrane-bound and involved in lysosome-related vesicle transport and small GTPase mediated signal transduction.
<b>Target</b>	RAB27, member RAS oncogene family
<b>Clonality</b>	Polyclonal
<b>Species/Host</b>	Goat
<b>Isotype</b>	IgG
<b>Conjugation</b>	Unconjugated
<b>Reactivity</b>	Bovine, Canine, Donkey, Equine, Feline, Gallus, Goat, Guinea pig, Hamster, Human, Mouse, Other, Porcine, Primate, Rabbit, Rat, Sheep
<b>Form/Appearance</b>	Polyclonal antibody supplied as a 200 or 500 µl (3 mg/ml) aliquot in PBS, 20% glycerol and 0.05% sodium azide. This antibody is epitope-affinity purified from goat antiserum.
<b>Concentration</b>	Please inquire
<b>Purification</b>	Epitope affinity purified
<b>Immunogen</b>	Antigen: Purified recombinant peptide derived from within residues 120 aa to the C-terminus of mouse Rab27a and rab27b produced in E. coli.
<b>Tested applications</b>	IF, IHC-Fr, IHC-P, WB

**Biorbyt Ltd.**

7 Signet Court, Swann Road  
Cambridge  
CB5 8LA  
United Kingdom

Email: [info@biorbyt.com](mailto:info@biorbyt.com), [support@biorbyt.com](mailto:support@biorbyt.com)

Phone: [+44 \(0\)1223 859353](tel:+44(0)1223859353) | Fax: [+1 \(415\) 651-8558](tel:+1(415)651-8558)

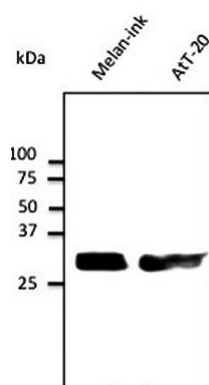
**Biorbyt LLC**

68 TW Alexander Drive  
Research Triangle Park  
Durham  
NC 27713-2847  
United States

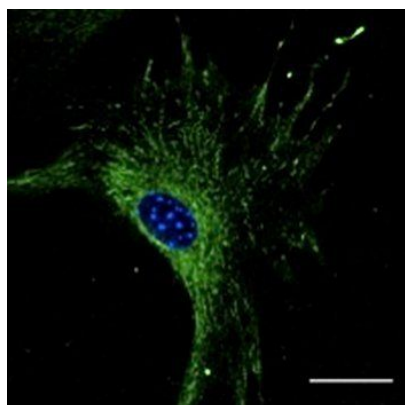
Email: [info@biorbyt.com](mailto:info@biorbyt.com), [support@biorbyt.com](mailto:support@biorbyt.com)

Phone: [+1 \(415\) 906-5211](tel:+1(415)906-5211) | Fax: [+1 \(415\) 651-8558](tel:+1(415)651-8558)

<b>Dilution range</b>	WB:1:500-1:2,000, IF:1:50-1:250, IHC-P:1:50-1:400, IHC-F:1:50-1:400
<b>Application notes</b>	The antibody solution should be gently mixed before use.
<b>Specificity</b>	Detects total Rab27 levels by Western blot in the following human, rat and mouse whole cell lysates and transfected cells with GFP-Rab27a and GFP-Rab27b cds.
<b>Storage</b>	Maintain refrigerated at 2-8°C for up to 2 weeks. For long term storage store at -20°C in small aliquots to prevent freeze-thaw cycles.
<b>Note</b>	For research use only
<b>Expiration Date</b>	12 months from date of receipt.



Western blot analysis of Melan-ink and At-T20 cell line lysate using Rab27 antibody.



Confocal immunofluorescence analysis of B6-RPE07 using Rab27 antibody.

**Biorbyt Ltd.**

7 Signet Court, Swann Road  
Cambridge  
CB5 8LA  
United Kingdom

Email: [info@biorbyt.com](mailto:info@biorbyt.com), [support@biorbyt.com](mailto:support@biorbyt.com)

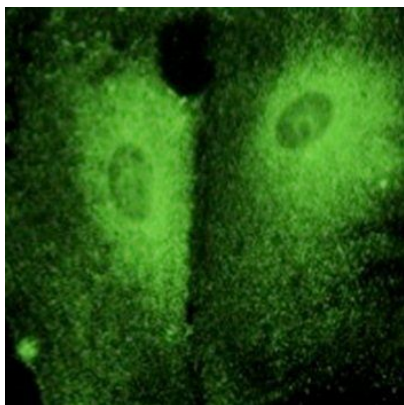
Phone: +44 (0)1223 859353 | Fax: +1 (415) 651-8558

**Biorbyt LLC**

68 TW Alexander Drive  
Research Triangle Park  
Durham  
NC 27713-2847  
United States

Email: [info@biorbyt.com](mailto:info@biorbyt.com), [support@biorbyt.com](mailto:support@biorbyt.com)

Phone: +1 (415) 906-5211 | Fax: +1 (415) 651-8558



Confocal immunofluorescence analysis of RPE cells using Rab27 antibody.

---

**Biorbyt Ltd.**

7 Signet Court, Swann Road  
Cambridge  
CB5 8LA  
United Kingdom

Email: [info@biorbyt.com](mailto:info@biorbyt.com), [support@biorbyt.com](mailto:support@biorbyt.com)

Phone: [+44 \(0\)1223 859353](tel:+44(0)1223859353) | Fax: [+1 \(415\) 651-8558](tel:+1(415)651-8558)

**Biorbyt LLC**

68 TW Alexander Drive  
Research Triangle Park  
Durham  
NC 27713-2847  
United States

Email: [info@biorbyt.com](mailto:info@biorbyt.com), [support@biorbyt.com](mailto:support@biorbyt.com)

Phone: [+1 \(415\) 906-5211](tel:+1(415)906-5211) | Fax: [+1 \(415\) 651-8558](tel:+1(415)651-8558)