

Product Datasheet

GLP2R Antibody (orb1533426)

Catalog Number	orb1533426
Category	Antibodies
Description	GLP2R Antibody
Target	GLP2R
Clonality	Polyclonal
Species/Host	Rabbit
Conjugation	Unconjugated
Reactivity	Guinea pig, Human, Monkey
Concentration	1 mg/ml
Buffer/Preservatives	PBS, 0.1% Sodium Azide
Purification	Immunoaffinity purified
Immunogen	Synthetic 18 amino acid peptide from N-Terminus extracellular domain of human GLP2R. Percent identity with other species by BLAST analysis: Human, Gorilla, Monkey, Marmoset (100%); Gibbon (94%); Bovine, Dog, Elephant, Panda, Pig (89%); Bat, Rabbit (83%).
Tested applications	ICC, IF, IHC, IHC-P, IP, WB
Dilution range	ICC, IF, IHC, IHC-P (10 - 20 µg/ml), IP, WB
Specificity	Human GLP2R. BLAST analysis of the peptide immunogen showed no homology with other human proteins.

Biorbyt Ltd.

7 Signet Court, Swann Road
Cambridge
CB5 8LA
United Kingdom

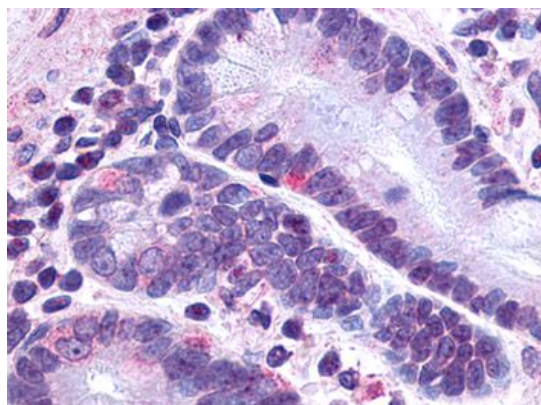
Email: info@biorbyt.com, support@biorbyt.com
Phone: [+44 \(0\)1223 859353](tel:+44(0)1223859353) | Fax: [+1 \(415\) 651-8558](tel:+1(415)651-8558)

Biorbyt LLC

68 TW Alexander Drive
Research Triangle Park
Durham
NC 27713
United States

Email: info@biorbyt.com, support@biorbyt.com
Phone: [+1 \(415\) 906-5211](tel:+1(415)906-5211) | Fax: [+1 \(415\) 651-8558](tel:+1(415)651-8558)

Storage	Maintain refrigerated at 2-8°C for up to 2 weeks. For long term storage store at -20°C in small aliquots to prevent freeze-thaw cycles.
Note	For research use only
Expiration Date	12 months from date of receipt.



Anti-GLP2R antibody IHC of human small intestine, neuroendocrine cells. Immunohistochemistry of formalin-fixed, paraffin-embedded tissue after heat-induced antigen retrieval.

Biorbyt Ltd.

7 Signet Court, Swann Road
Cambridge
CB5 8LA
United Kingdom

Email: info@biorbyt.com, support@biorbyt.com
Phone: [+44 \(0\)1223 859353](tel:+44(0)1223859353) | Fax: [+1 \(415\) 651-8558](tel:+1(415)651-8558)

Biorbyt LLC

68 TW Alexander Drive
Research Triangle Park
Durham
NC 27713
United States

Email: info@biorbyt.com, support@biorbyt.com
Phone: [+1 \(415\) 906-5211](tel:+1(415)906-5211) | Fax: [+1 \(415\) 651-8558](tel:+1(415)651-8558)