

Product Datasheet

GPER1/GPR30 Antibody (orb1533245)

Catalog Number	orb1533245
Category	Antibodies
Description	GPER1/GPR30 Antibody
Target	GPER1 / GPR30
Clonality	Polyclonal
Species/Host	Rabbit
Conjugation	Unconjugated
Reactivity	Human
Concentration	1 mg/ml
Buffer/Preservatives	PBS, 0.1% Sodium Azide
Purification	Immunoaffinity purified
Immunogen	Synthetic 16 amino acid peptide from 1st cytoplasmic domain of human GPR30. Percent identity with other species by BLAST analysis: Human, Gorilla (100%); Marmoset (94%); Monkey, Panda (88%).
Tested applications	ICC, IHC, IHC-P, WB
Dilution range	ICC, IHC, IHC-P (15 - 20 µg/ml), WB
Application notes	Not recommended for: IF
Specificity	Human GPR30. BLAST analysis of the peptide immunogen showed no homology with other human proteins.

Biorbyt Ltd.

7 Signet Court, Swann Road
Cambridge
CB5 8LA
United Kingdom

Email: info@biorbyt.com, support@biorbyt.com

Phone: [+44 \(0\)1223 859353](tel:+44(0)1223859353) | Fax: [+1 \(415\) 651-8558](tel:+1(415)651-8558)

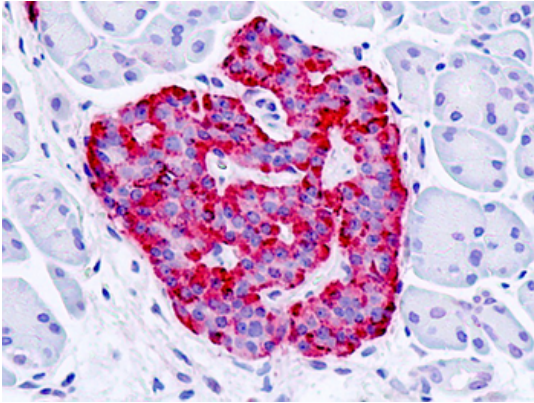
Biorbyt LLC

68 TW Alexander Drive
Research Triangle Park
Durham
NC 27713
United States

Email: info@biorbyt.com, support@biorbyt.com

Phone: [+1 \(415\) 906-5211](tel:+1(415)906-5211) | Fax: [+1 \(415\) 651-8558](tel:+1(415)651-8558)

Storage	Maintain refrigerated at 2-8°C for up to 2 weeks. For long term storage store at -20°C in small aliquots to prevent freeze-thaw cycles.
Note	For research use only
Expiration Date	12 months from date of receipt.



Human, Pancreas, Islet: Formalin-Fixed Paraffin-Embedded (FFPE)

Biorbyt Ltd.

7 Signet Court, Swann Road
Cambridge
CB5 8LA
United Kingdom

Email: info@biorbyt.com, support@biorbyt.com

Phone: [+44 \(0\)1223 859353](tel:+44(0)1223859353) | Fax: [+1 \(415\) 651-8558](tel:+1(415)651-8558)

Biorbyt LLC

68 TW Alexander Drive
Research Triangle Park
Durham
NC 27713
United States

Email: info@biorbyt.com, support@biorbyt.com

Phone: [+1 \(415\) 906-5211](tel:+1(415)906-5211) | Fax: [+1 \(415\) 651-8558](tel:+1(415)651-8558)