

Product Datasheet

Rabbit Glu-Glu Tag Antibody (orb1530873)

Catalog Number	orb1530873
Category	Antibodies
Description	Glu-Glu Tag Antibody
Target	Glu-Glu Tag
Clonality	Polyclonal
Species/Host	Rabbit
Isotype	IgG
Conjugation	Unconjugated
Form/Appearance	Liquid
Concentration	1 mg/ml
Buffer/Preservatives	Phosphate Buffered Saline (PBS) containing 0.09% Sodium Azide
Purification	Antigen Affinity Purified
Tested applications	ELISA, ICC, IP, WB
Dilution range	WB - 1:1,000 - 1:30,000; IP - 1 - 4 µg/mg lysate; ICC - 1:100 - 1:400; ELISA - 1:1,000 - 1:30,000; for coating plates 1:100 - 1:500

Biorbyt Ltd.

7 Signet Court, Swann Road
Cambridge
CB5 8LA
United Kingdom

Email: info@biorbyt.com, support@biorbyt.com
Phone: [+44 \(0\)1223 859353](tel:+44(0)1223859353) | Fax: [+1 \(415\) 651-8558](tel:+1(415)651-8558)

Biorbyt LLC

68 TW Alexander Drive
Research Triangle Park
Durham
NC 27713
United States

Email: info@biorbyt.com, support@biorbyt.com
Phone: [+1 \(415\) 906-5211](tel:+1(415)906-5211) | Fax: [+1 \(415\) 651-8558](tel:+1(415)651-8558)

Application notes

Format: Whole IgG. Application Information: All western blot analysis is performed using 5% Milk-TBST for blocking and as antibody diluent. Primary antibody is incubated overnight. Western blots of cell lysates are performed using Goat anti-Rabbit IgG Heavy and Light Chain Antibody (Cat. No. A120-101P). Western blots of immunoprecipitates are performed using Goat anti-Rabbit Light Chain HRP Conjugate (Cat. No. A120-113P) with 5% Normal Pig Serum (Cat. No. S100-020) added to the blocking buffer.

Antibody Type

Primary Antibody

Storage

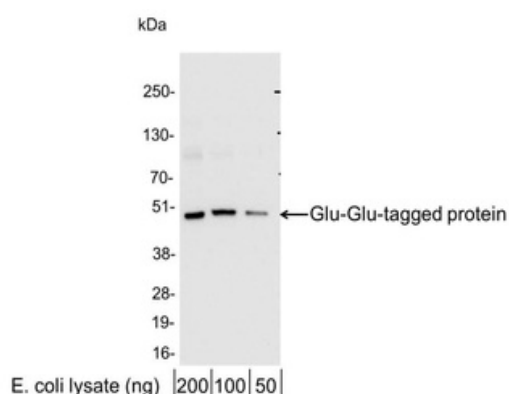
2 - 8°C

Note

For research use only

Expiration Date

12 months from date of receipt.



Detection of Glu-Glu-tagged protein by western blot. Samples: 200, 100, or 50 ng of E. coli whole cell lysate expressing a multi-tag fusion protein. Antibodies: Affinity purified, rabbit anti-Glu-Glu antibody orb1530873 at 0.04 µg/ml (1:25, 000).

Biorbyt Ltd.

7 Signet Court, Swann Road
Cambridge
CB5 8LA
United Kingdom

Email: info@biorbyt.com, support@biorbyt.comPhone: [+44 \(0\)1223 859353](tel:+44(0)1223859353) | Fax: [+1 \(415\) 651-8558](tel:+1(415)651-8558)**Biorbyt LLC**

68 TW Alexander Drive
Research Triangle Park
Durham
NC 27713
United States

Email: info@biorbyt.com, support@biorbyt.comPhone: [+1 \(415\) 906-5211](tel:+1(415)906-5211) | Fax: [+1 \(415\) 651-8558](tel:+1(415)651-8558)