

Product Datasheet

Rabbit V5 Tag Antibody (HRP) (orb1530858)

Catalog Number	orb1530858
Category	Antibodies
Description	V5 Tag Antibody
Target	V5 Tag
Clonality	Polyclonal
Species/Host	Rabbit
Isotype	IgG
Conjugation	HRP
Form/Appearance	Liquid
Concentration	1 mg/ml
Buffer/Preservatives	Phosphate Buffered Saline (PBS) containing 0.2% rAlbumin and 0.05% Pro-Clean 400
Purification	Antigen Affinity Purified
Tested applications	ELISA, ICC, WB
Dilution range	WB - 1:1,000 - 1:30,000; IHC - Not applicable; ICC - 1:200 - 1:500; ELISA - 1:10,000 - 1:100,000
Application notes	Format: Whole IgG. Application Information: All western blot analysis is performed using 5% Milk-TBST for blocking and as antibody diluent. Primary antibody is incubated overnight. Western blots of cell lysates are performed using Goat anti-Rabbit IgG Heavy and Light Chain Antibody (Cat. No. A120-101P).

Biorbyt Ltd.

7 Signet Court, Swann Road
Cambridge
CB5 8LA
United Kingdom

Email: info@biorbyt.com, support@biorbyt.com

Phone: [+44 \(0\)1223 859353](tel:+44(0)1223859353) | Fax: [+1 \(415\) 651-8558](tel:+1(415)651-8558)

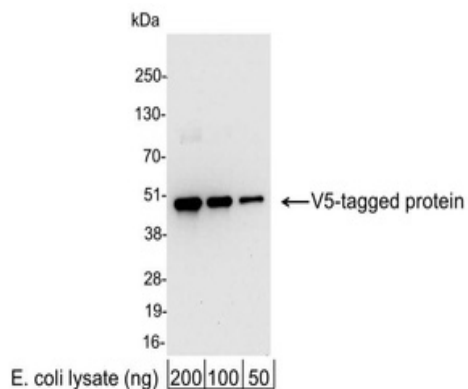
Biorbyt LLC

68 TW Alexander Drive
Research Triangle Park
Durham
NC 27713
United States

Email: info@biorbyt.com, support@biorbyt.com

Phone: [+1 \(415\) 906-5211](tel:+1(415)906-5211) | Fax: [+1 \(415\) 651-8558](tel:+1(415)651-8558)

Antibody Type	Primary Antibody
Storage	2 - 8°C
Note	For research use only
Expiration Date	12 months from date of receipt.



Detection of V5-tagged protein by western blot. Samples: 200, 100, or 50 ng of E. coli whole cell lysate expressing a multi-tag fusion protein. Antibodies: Affinity-purified, HRP-conjugated, rabbit anti-V5 antibody orb1530858 at 0.2 µg/ml (1:5, 000).

Biorbyt Ltd.

7 Signet Court, Swann Road
Cambridge
CB5 8LA
United Kingdom

Email: info@biorbyt.com, support@biorbyt.com
Phone: +44 (0)1223 859353 | Fax: +1 (415) 651-8558

Biorbyt LLC

68 TW Alexander Drive
Research Triangle Park
Durham
NC 27713
United States

Email: info@biorbyt.com, support@biorbyt.com
Phone: +1 (415) 906-5211 | Fax: +1 (415) 651-8558