

Product Datasheet

Rabbit Phospho MCM2 (S41) Antibody (orb1530668)

Catalog Number	orb1530668
Category	Antibodies
Description	MCM2, Phospho (S41) Antibody
Target	MCM2 Phospho (S41)
Clonality	Polyclonal
Species/Host	Rabbit
Isotype	IgG
Conjugation	Unconjugated
Reactivity	Human, Mouse
Predicted Reactivity	Frog, Xenopus
Form/Appearance	Liquid
Concentration	1000 µg/ml
Buffer/Preservatives	Tris-citrate/phosphate buffer, pH 7 to 8 containing 0.09% Sodium Azide
Purification	Antigen Affinity Purified
Immunogen	Surrounding serine 41
UniProt ID	P49736
Tested applications	IHC, WB

Biorbyt Ltd.

7 Signet Court, Swann Road
Cambridge
CB5 8LA
United Kingdom

Email: info@biorbyt.com, support@biorbyt.com

Phone: [+44 \(0\)1223 859353](tel:+44(0)1223859353) | Fax: [+1 \(415\) 651-8558](tel:+1(415)651-8558)

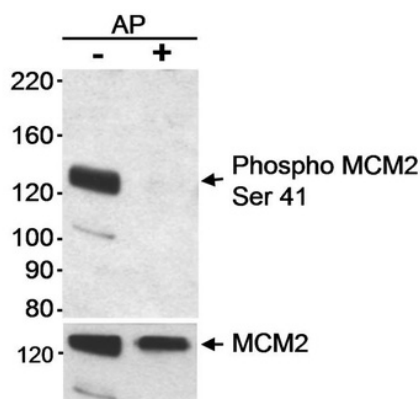
Biorbyt LLC

68 TW Alexander Drive
Research Triangle Park
Durham
NC 27713
United States

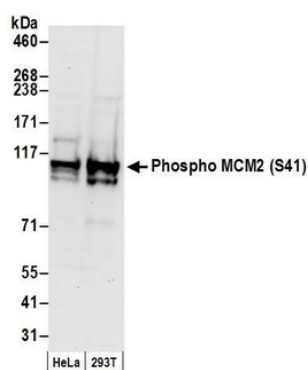
Email: info@biorbyt.com, support@biorbyt.com

Phone: [+1 \(415\) 906-5211](tel:+1(415)906-5211) | Fax: [+1 \(415\) 651-8558](tel:+1(415)651-8558)

Dilution range	WB - 1:5,000 - 1:20,000; IHC - 1:1,000 - 1:5,000. Epitope retrieval with citrate buffer pH 6.0 is recommended for FFPE tissue sections.
Application notes	Format: Whole IgG
Antibody Type	Primary Antibody
Storage	2 - 8°C
Note	For research use only
NCBI	NP_0045117.2
Expiration Date	12 months from date of receipt.



Detection of human Phospho MCM2 (Ser41) by western blot. Samples: HeLa cells that were either untreated or treated with alkaline phosphatase (AP). Antibodies: Affinity purified rabbit anti-phospho MCM2 (Ser41) antibody orb1530668 used at 0.1 µg/ml.



Detection of human Phospho MCM2 (S41) by western blot. Samples: Whole cell lysate from HeLa and HEK293T cells. Antibody: Affinity purified rabbit anti-Phospho MCM2 (S41) antibody orb1530668 at 0.1 µg/ml.

Biorbyt Ltd.

7 Signet Court, Swann Road
Cambridge
CB5 8LA
United Kingdom

Email: info@biorbyt.com, support@biorbyt.com

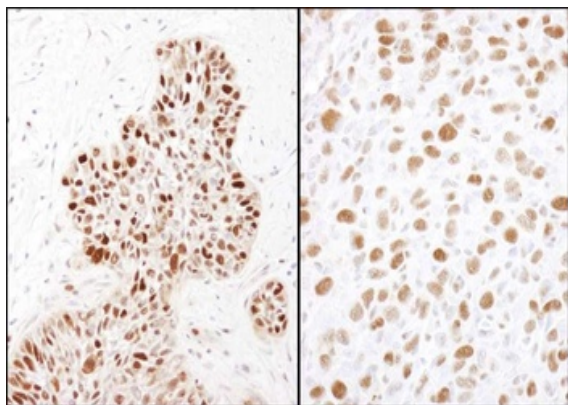
Phone: +44 (0)1223 859353 | Fax: +1 (415) 651-8558

Biorbyt LLC

68 TW Alexander Drive
Research Triangle Park
Durham
NC 27713
United States

Email: info@biorbyt.com, support@biorbyt.com

Phone: +1 (415) 906-5211 | Fax: +1 (415) 651-8558



Detection of human and mouse MCM2 (Ser41) by IHC. Sample: FFPE section of human laryngeal squamous cell carcinoma (left) and mouse squamous cell carcinoma (right). Antibody: Affinity purified rabbit anti-MCM2 (Ser41) used at a dilution of 1:1, 000.

Biorbyt Ltd.

7 Signet Court, Swann Road
Cambridge
CB5 8LA
United Kingdom

Email: info@biorbyt.com, support@biorbyt.com

Phone: [+44 \(0\)1223 859353](tel:+44(0)1223859353) | Fax: [+1 \(415\) 651-8558](tel:+1(415)651-8558)

Biorbyt LLC

68 TW Alexander Drive
Research Triangle Park
Durham
NC 27713
United States

Email: info@biorbyt.com, support@biorbyt.com

Phone: [+1 \(415\) 906-5211](tel:+1(415)906-5211) | Fax: [+1 \(415\) 651-8558](tel:+1(415)651-8558)