

## Product Datasheet

### Rabbit PCNA Antibody (orb1530430)

<b>Catalog Number</b>	orb1530430
<b>Category</b>	Antibodies
<b>Description</b>	PCNA Antibody
<b>Target</b>	PCNA
<b>Clonality</b>	Polyclonal
<b>Species/Host</b>	Rabbit
<b>Isotype</b>	IgG
<b>Conjugation</b>	Unconjugated
<b>Reactivity</b>	Human, Mouse
<b>Predicted Reactivity</b>	Bovine, Rat
<b>Form/Appearance</b>	Liquid
<b>Concentration</b>	1000 µg/ml
<b>Buffer/Preservatives</b>	Tris-citrate/phosphate buffer, pH 7 to 8 containing 0.09% Sodium Azide
<b>Purification</b>	Antigen Affinity Purified
<b>Immunogen</b>	Between 211 and C-terminus
<b>UniProt ID</b>	<b>P12004</b>
<b>Tested applications</b>	IHC, IP, WB

**Biorbyt Ltd.**

7 Signet Court, Swann Road  
Cambridge  
CB5 8LA  
United Kingdom

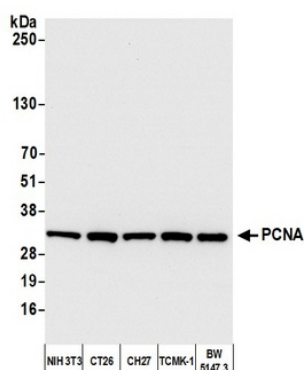
Email: [info@biorbyt.com](mailto:info@biorbyt.com), [support@biorbyt.com](mailto:support@biorbyt.com)  
Phone: [+44 \(0\)1223 859353](tel:+44(0)1223859353) | Fax: [+1 \(415\) 651-8558](tel:+1(415)651-8558)

**Biorbyt LLC**

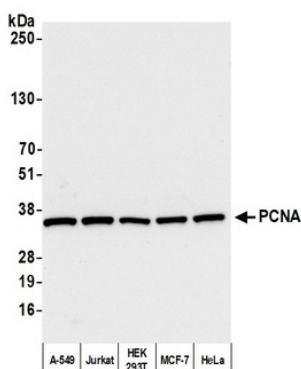
68 TW Alexander Drive  
Research Triangle Park  
Durham  
NC 27713  
United States

Email: [info@biorbyt.com](mailto:info@biorbyt.com), [support@biorbyt.com](mailto:support@biorbyt.com)  
Phone: [+1 \(415\) 906-5211](tel:+1(415)906-5211) | Fax: [+1 \(415\) 651-8558](tel:+1(415)651-8558)

<b>Dilution range</b>	WB - 1:5,000 - 1:20,000; IP - 2 - 10 µg/mg lysate; IHC - 1:2,000 to 1:10,000. Epitope retrieval with citrate buffer pH6.0 is recommended for FFPE tissue sections.; IHC-IF - 1:1,000 - 1:5,000
<b>Application notes</b>	Format: Whole IgG
<b>Antibody Type</b>	Primary Antibody
<b>Storage</b>	2 - 8°C
<b>Note</b>	For research use only
<b>NCBI</b>	<a href="#">NP_002583.1</a>
<b>Expiration Date</b>	12 months from date of receipt.



Detection of mouse PCNA by western blot. Samples: Whole cell lysate from NIH 3T3, CT26, CH27, TCMK-1, and BW5147.3 cells. Antibody: Affinity purified rabbit anti-PCNA antibody at 0.1 µg/ml.



Detection of human PCNA by western blot. Samples: Whole cell lysate from A-549, Jurkat, HEK293T, MCF-7, and HeLa cells. Antibody: Affinity purified rabbit anti-PCNA antibody at 0.1 µg/ml.

**Biorbyt Ltd.**

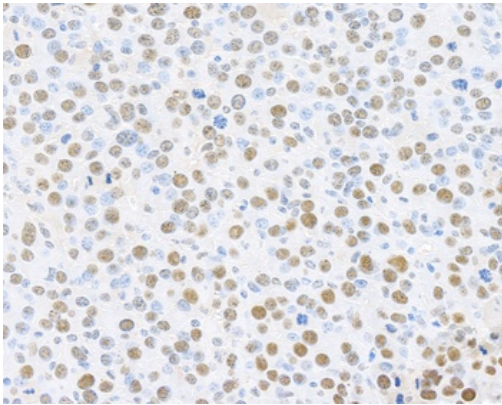
7 Signet Court, Swann Road  
Cambridge  
CB5 8LA  
United Kingdom

Email: [info@biorbyt.com](mailto:info@biorbyt.com), [support@biorbyt.com](mailto:support@biorbyt.com)  
Phone: +44 (0)1223 859353 | Fax: +1 (415) 651-8558

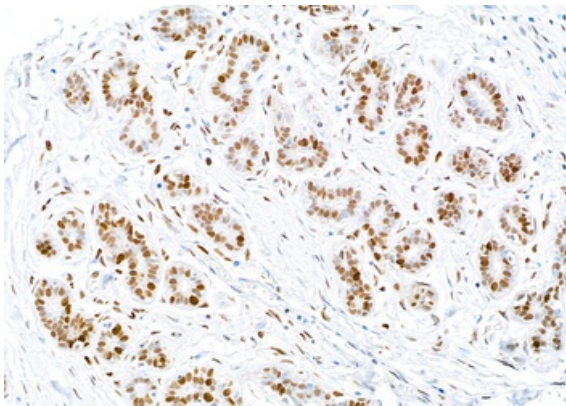
**Biorbyt LLC**

68 TW Alexander Drive  
Research Triangle Park  
Durham  
NC 27713  
United States

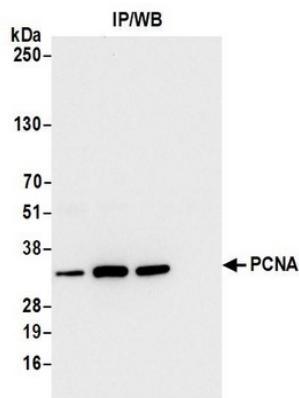
Email: [info@biorbyt.com](mailto:info@biorbyt.com), [support@biorbyt.com](mailto:support@biorbyt.com)  
Phone: +1 (415) 906-5211 | Fax: +1 (415) 651-8558



Detection of mouse PCNA by immunohistochemistry. Sample: FFPE section of mouse renal cell carcinoma. Antibody: Affinity purified rabbit anti-PCNA used at a dilution of 1:5000 (0.2 µg/ml).



Detection of human PCNA by immunohistochemistry. Sample: FFPE section of human breast. Antibody: Affinity purified rabbit anti-PCNA used at a dilution of 1:5000 (0.2 µg/ml).



Detection of human PCNA by western blot of immunoprecipitates. Samples: Whole cell lysate from HEK293T cells. Antibodies: Affinity purified rabbit anti-PCNA antibody.

**Biorbyt Ltd.**

7 Signet Court, Swann Road  
Cambridge  
CB5 8LA  
United Kingdom

Email: [info@biorbyt.com](mailto:info@biorbyt.com), [support@biorbyt.com](mailto:support@biorbyt.com)

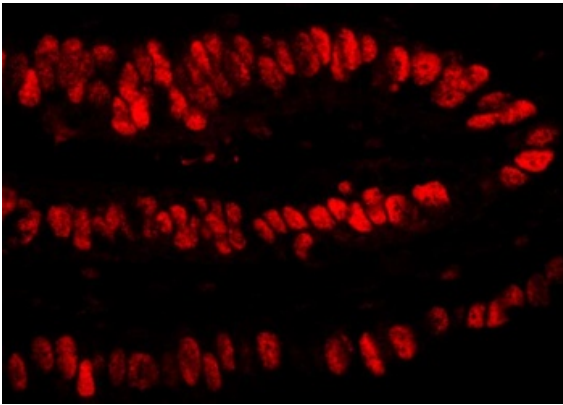
Phone: +44 (0)1223 859353 | Fax: +1 (415) 651-8558

**Biorbyt LLC**

68 TW Alexander Drive  
Research Triangle Park  
Durham  
NC 27713  
United States

Email: [info@biorbyt.com](mailto:info@biorbyt.com), [support@biorbyt.com](mailto:support@biorbyt.com)

Phone: +1 (415) 906-5211 | Fax: +1 (415) 651-8558



Detection of human PCNA by IHC. Sample: human stomach carcinoma. Antibody: Affinity purified rabbit anti-PCNA at 1:4,000. Detection: Red-fluorescent goat anti-rabbit IgG-heavy and light chain cross-adsorbed Antibody DyLight® 594 Conjugated.

**Biorbyt Ltd.**

7 Signet Court, Swann Road  
Cambridge  
CB5 8LA  
United Kingdom

Email: [info@biorbyt.com](mailto:info@biorbyt.com), [support@biorbyt.com](mailto:support@biorbyt.com)

Phone: [+44 \(0\)1223 859353](tel:+44(0)1223859353) | Fax: [+1 \(415\) 651-8558](tel:+1(415)651-8558)

**Biorbyt LLC**

68 TW Alexander Drive  
Research Triangle Park  
Durham  
NC 27713  
United States

Email: [info@biorbyt.com](mailto:info@biorbyt.com), [support@biorbyt.com](mailto:support@biorbyt.com)

Phone: [+1 \(415\) 906-5211](tel:+1(415)906-5211) | Fax: [+1 \(415\) 651-8558](tel:+1(415)651-8558)