

## Product Datasheet

### Rabbit Sec23IP/MSTP053 Antibody (orb1529938)

<b>Catalog Number</b>	orb1529938
<b>Category</b>	Antibodies
<b>Description</b>	Sec23IP/MSTP053 Antibody
<b>Target</b>	Sec23IP/MSTP053
<b>Clonality</b>	Polyclonal
<b>Species/Host</b>	Rabbit
<b>Isotype</b>	IgG
<b>Conjugation</b>	Unconjugated
<b>Reactivity</b>	Human
<b>Predicted Reactivity</b>	Mouse
<b>Form/Appearance</b>	Liquid
<b>Concentration</b>	200 µg/ml
<b>Buffer/Preservatives</b>	Tris-buffered Saline containing 0.1% rAlbumin and 0.09% Sodium Azide
<b>Purification</b>	Antigen Affinity Purified
<b>Immunogen</b>	Between 325 and 375
<b>UniProt ID</b>	<b>Q9Y6Y8</b>
<b>Tested applications</b>	IHC, WB

**Biorbyt Ltd.**

7 Signet Court, Swann Road  
Cambridge  
CB5 8LA  
United Kingdom

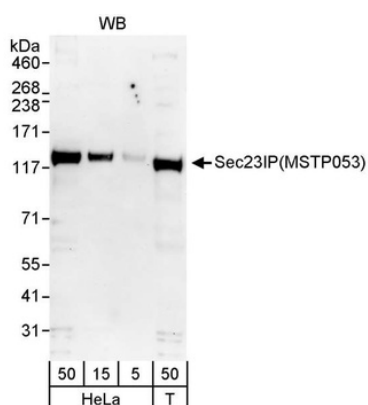
Email: [info@biorbyt.com](mailto:info@biorbyt.com), [support@biorbyt.com](mailto:support@biorbyt.com)  
Phone: [+44 \(0\)1223 859353](tel:+44(0)1223859353) | Fax: [+1 \(415\) 651-8558](tel:+1(415)651-8558)

**Biorbyt LLC**

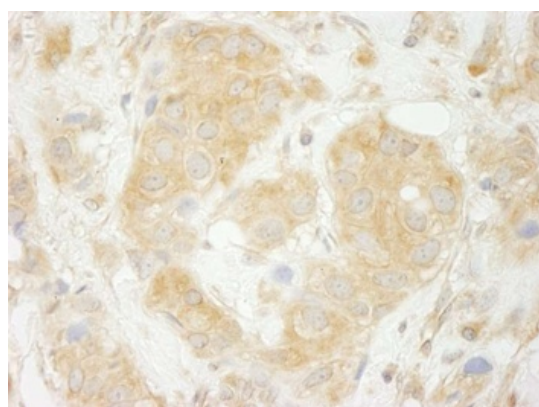
68 TW Alexander Drive  
Research Triangle Park  
Durham  
NC 27713  
United States

Email: [info@biorbyt.com](mailto:info@biorbyt.com), [support@biorbyt.com](mailto:support@biorbyt.com)  
Phone: [+1 \(415\) 906-5211](tel:+1(415)906-5211) | Fax: [+1 \(415\) 651-8558](tel:+1(415)651-8558)

<b>Dilution range</b>	WB - 1:2,500 - 1:10,000; IP - Not recommended. Use rabbit anti-Sec23IP/MSTP053 antibody A300-592A or A300-592A.; IHC - 1:100 - 1:500. Epitope retrieval with Tris-EDTA pH 9.0 is recommended for FFPE tissue sections.
<b>Application notes</b>	Format: Whole IgG
<b>Antibody Type</b>	Primary Antibody
<b>Storage</b>	2 - 8°C
<b>Note</b>	For research use only
<b>NCBI</b>	<a href="#">NP_009121.1</a>
<b>Expiration Date</b>	12 months from date of receipt.



Detection of human Sec23IP(MSTP053) by western blot. Samples: Whole cell lysate from HeLa and HEK293T cells. Antibody: Affinity purified rabbit anti-Sec23IP(MSTP053) antibody (orb1529938) at 0.04 µg/ml.



Detection of human Sec23IP(MSTP053) by immunohistochemistry. Sample: FFPE section of human breast carcinoma. Antibody: Affinity purified rabbit anti-expndtw-6 Sec23IP(MSTP053) used at a dilution of 1:200 (1µg/ml).

**Biorbyt Ltd.**

7 Signet Court, Swann Road  
Cambridge  
CB5 8LA  
United Kingdom

Email: [info@biorbyt.com](mailto:info@biorbyt.com), [support@biorbyt.com](mailto:support@biorbyt.com)  
Phone: [+44 \(0\)1223 859353](tel:+44(0)1223859353) | Fax: [+1 \(415\) 651-8558](tel:+1(415)651-8558)

**Biorbyt LLC**

68 TW Alexander Drive  
Research Triangle Park  
Durham  
NC 27713  
United States

Email: [info@biorbyt.com](mailto:info@biorbyt.com), [support@biorbyt.com](mailto:support@biorbyt.com)  
Phone: [+1 \(415\) 906-5211](tel:+1(415)906-5211) | Fax: [+1 \(415\) 651-8558](tel:+1(415)651-8558)