

Product Datasheet

Rabbit RBM15 Antibody (orb1529573)

| | |
|-----------------------------|--|
| Catalog Number | orb1529573 |
| Category | Antibodies |
| Description | RBM15 Antibody |
| Target | RBM15 |
| Clonality | Polyclonal |
| Species/Host | Rabbit |
| Isotype | IgG |
| Conjugation | Unconjugated |
| Reactivity | Human |
| Form/Appearance | Liquid |
| Concentration | 1000 µg/ml |
| Buffer/Preservatives | Tris-citrate/phosphate buffer, pH 7 to 8 containing 0.09% Sodium Azide |
| Purification | Antigen Affinity Purified |
| Immunogen | Between 550 and 600 |
| UniProt ID | Q96T37 |
| Tested applications | IP, WB |
| Dilution range | WB - 1:10,000 - 1:25,000; IP - 2 - 10 µg/mg lysate |
| Application notes | Format: Whole IgG |

Biorbyt Ltd.

7 Signet Court, Swann Road
Cambridge
CB5 8LA
United Kingdom

Email: info@biorbyt.com, support@biorbyt.com

Phone: [+44 \(0\)1223 859353](tel:+44(0)1223859353) | Fax: [+1 \(415\) 651-8558](tel:+1(415)6518558)

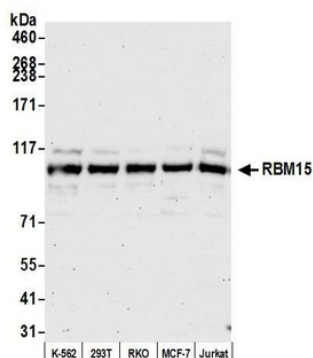
Biorbyt LLC

68 TW Alexander Drive
Research Triangle Park
Durham
NC 27713
United States

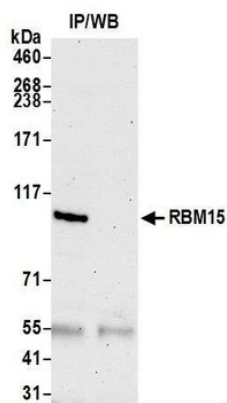
Email: info@biorbyt.com, support@biorbyt.com

Phone: [+1 \(415\) 906-5211](tel:+1(415)9065211) | Fax: [+1 \(415\) 651-8558](tel:+1(415)6518558)

| | |
|------------------------|---------------------------------|
| Antibody Type | Primary Antibody |
| Storage | 2 - 8°C |
| Note | For research use only |
| NCBI | NP_073605.4 |
| Expiration Date | 12 months from date of receipt. |



Detection of human RBM15 by western blot. Samples: Whole cell lysate from K-562, HEK293T, RKO, MCF-7, and Jurkat cells. Antibody: Affinity purified rabbit anti-RBM15 antibody orb1529573 at 0.04 µg/ml.



Detection of human RBM15 by western blot of immunoprecipitates. Samples: Whole cell lysate from HeLa cells. Antibodies: Affinity purified rabbit anti-RBM15 antibody.

Biorbyt Ltd.

7 Signet Court, Swann Road
Cambridge
CB5 8LA
United Kingdom

Email: info@biorbyt.com, support@biorbyt.com

Phone: +44 (0)1223 859353 | Fax: +1 (415) 651-8558

Biorbyt LLC

68 TW Alexander Drive
Research Triangle Park
Durham
NC 27713
United States

Email: info@biorbyt.com, support@biorbyt.com

Phone: +1 (415) 906-5211 | Fax: +1 (415) 651-8558