

Product Datasheet

Rabbit anti-PRMT6 Antibody (orb1529371)

Catalog Number	orb1529371
Category	Antibodies
Description	PRMT6 Antibody
Target	PRMT6
Clonality	Polyclonal
Species/Host	Rabbit
Conjugation	Unconjugated
Reactivity	Human
Form/Appearance	Whole IgG
Concentration	1000 µg/ml
Buffer/Preservatives	Tris-citrate/phosphate buffer, pH 7 to 8 containing 0.09% Sodium Azide
Immunogen	Between 325 and C-terminus
UniProt ID	Q96LA8
Tested applications	IHC, WB
Dilution range	WB - 1:2,000 - 1:10,000; IP - Not recommended. Use rabbit anti-PRMT6 antibody A300-928A.; IHC - 1:2,000 - 1:10,000. Epitope retrieval with Tris-EDTA pH 9.0 is recommended for FFPE tissue sections.
Application notes	Format: Whole IgG
Antibody Type	Primary Antibody

Biorbyt Ltd.

7 Signet Court, Swann Road
Cambridge
CB5 8LA
United Kingdom

Email: info@biorbyt.com, support@biorbyt.com

Phone: [+44 \(0\)1223 859353](tel:+44(0)1223859353) | Fax: [+1 \(415\) 651-8558](tel:+1(415)651-8558)

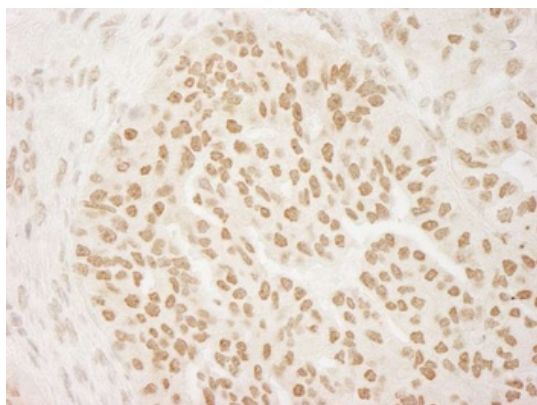
Biorbyt LLC

68 TW Alexander Drive
Research Triangle Park
Durham
NC 27713
United States

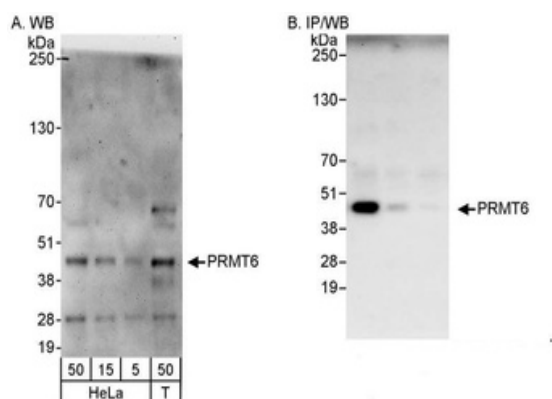
Email: info@biorbyt.com, support@biorbyt.com

Phone: [+1 \(415\) 906-5211](tel:+1(415)906-5211) | Fax: [+1 \(415\) 651-8558](tel:+1(415)651-8558)

Storage	2 - 8°C
Note	For research use only
NCBI	AAK85733.1
Expiration Date	12 months from date of receipt.



Detection of human PRMT6 by immunohistochemistry. Sample: FFPE section of human breast carcinoma. Antibody: Affinity purified rabbit anti-PRMT6 used at a dilution of 1:5, 000 (0.2 µg/ml).



Detection of human PRMT6 by WB and IP. Samples: HeLa and HEK293T cells. Antibodies: Affinity purified rabbit anti-PRMT6 antibody orb1529371 used for WB at 0.04 µg/ml (A) and 1 µg/ml (B) and used for IP at 3 µg/mg lysate (B).

Biorbyt Ltd.

7 Signet Court, Swann Road
Cambridge
CB5 8LA
United Kingdom

Email: info@biorbyt.com, support@biorbyt.com
Phone: +44 (0)1223 859353 | Fax: +1 (415) 651-8558

Biorbyt LLC

68 TW Alexander Drive
Research Triangle Park
Durham
NC 27713
United States

Email: info@biorbyt.com, support@biorbyt.com
Phone: +1 (415) 906-5211 | Fax: +1 (415) 651-8558