

Product Datasheet

Rabbit SMARCA2/BRM Antibody (orb1529220)

Catalog Number	orb1529220
Category	Antibodies
Description	SMARCA2/BRM Antibody
Target	SMARCA2/BRM
Clonality	Polyclonal
Species/Host	Rabbit
Isotype	IgG
Conjugation	Unconjugated
Reactivity	Human
Predicted Reactivity	Mouse
Form/Appearance	Liquid
Concentration	200 µg/ml
Buffer/Preservatives	Tris-buffered Saline containing 0.1% rAlbumin and 0.09% Sodium Azide
Purification	Antigen Affinity Purified
Immunogen	Between 100 and 150
UniProt ID	P51531
Tested applications	IP, WB
Dilution range	WB - 1:2,000 - 1:10,000; IP - 2 - 5 µg/mg lysate

Biorbyt Ltd.

7 Signet Court, Swann Road
Cambridge
CB5 8LA
United Kingdom

Email: info@biorbyt.com, support@biorbyt.com

Phone: [+44 \(0\)1223 859353](tel:+44(0)1223859353) | Fax: [+1 \(415\) 651-8558](tel:+1(415)651-8558)

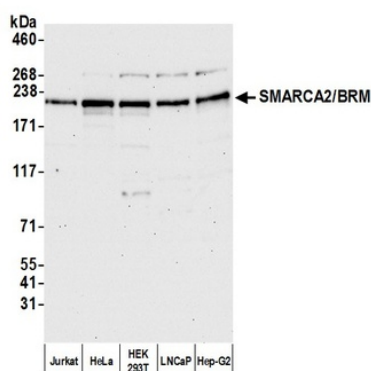
Biorbyt LLC

68 TW Alexander Drive
Research Triangle Park
Durham
NC 27713
United States

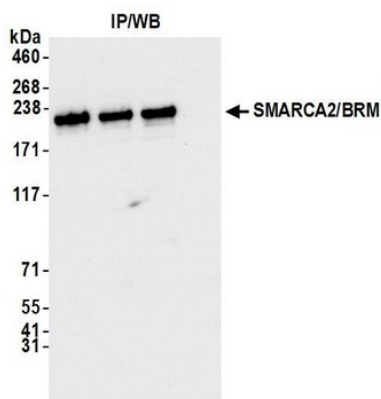
Email: info@biorbyt.com, support@biorbyt.com

Phone: [+1 \(415\) 906-5211](tel:+1(415)906-5211) | Fax: [+1 \(415\) 651-8558](tel:+1(415)651-8558)

Application notes	Format: Whole IgG
Antibody Type	Primary Antibody
Storage	2 - 8°C
Note	For research use only
NCBI	NP_003061.3
Expiration Date	12 months from date of receipt.



Detection of human SMARCA2-BRM by western blot. Samples: Whole cell lysate from Jurkat, HeLa, HEK293T, LNCaP, and Hep-G2 cells. Antibody: Affinity purified rabbit anti-SMARCA2-BRM antibody at 0.04 µg/ml.



Detection of human SMARCA2/BRM by western blot of immunoprecipitates. Samples: Whole cell lysate from HeLa cells. Antibodies: Affinity purified rabbit anti-SMARCA2/BRM antibody.

Biorbyt Ltd.

7 Signet Court, Swann Road
Cambridge
CB5 8LA
United Kingdom

Email: info@biorbyt.com, support@biorbyt.com

Phone: +44 (0)1223 859353 | Fax: +1 (415) 651-8558

Biorbyt LLC

68 TW Alexander Drive
Research Triangle Park
Durham
NC 27713
United States

Email: info@biorbyt.com, support@biorbyt.com

Phone: +1 (415) 906-5211 | Fax: +1 (415) 651-8558