

Product Datasheet

Aquaporin 1 Antibody (FITC) (orb152786)

| | |
|-----------------------------|--|
| Catalog Number | orb152786 |
| Category | Antibodies |
| Description | Rabbit polyclonal antibody against Aquaporin 1 Conjugated to FITC |
| Target | Aquaporin 1 |
| Clonality | Polyclonal |
| Species/Host | Rabbit |
| Conjugation | FITC |
| Reactivity | Human, Mouse, Rat |
| Concentration | 1 mg/ml |
| Buffer/Preservatives | 640.91mM DMSO, 136.36 mM Ethanolamine, 126.89 mM chlorides, 9.09mM phosphates, 9.09mM NaHCO ₃ |
| Purification | Protein A Purified |
| Immunogen | Produced against the N-terminal peptide (sequence N-MASEFKKKLF) of rat Aquaporin 1 |
| UniProt ID | P29975 |
| MW | 35-50kDa |
| Tested applications | ICC, IF, IHC, WB |
| Dilution range | WB (1:2000), IHC (1:200), ICC/IF (1:400) |

Biorbyt Ltd.

7 Signet Court, Swann Road
Cambridge
CB5 8LA
United Kingdom

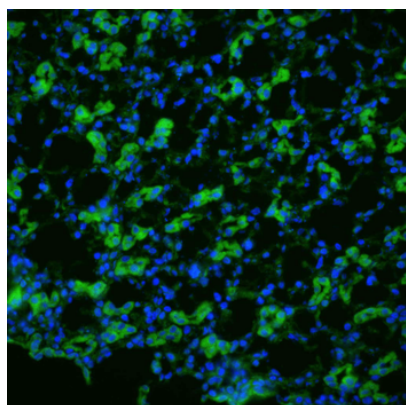
Email: info@biorbyt.com, support@biorbyt.com
Phone: [+44 \(0\)1223 859353](tel:+44(0)1223859353) | Fax: [+1 \(415\) 651-8558](tel:+1(415)651-8558)

Biorbyt LLC

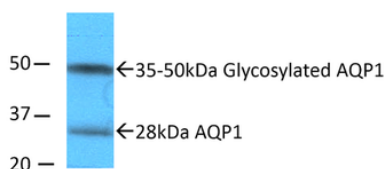
68 TW Alexander Drive
Research Triangle Park
Durham
NC 27713-2847
United States

Email: info@biorbyt.com, support@biorbyt.com
Phone: [+1 \(415\) 906-5211](tel:+1(415)906-5211) | Fax: [+1 \(415\) 651-8558](tel:+1(415)651-8558)

| | |
|--------------------------|--|
| Application notes | 0.5 µg/ml was sufficient for detection of aquaporin 1 in 10 µg of rat kidney tissue lysate by colorimetric immunoblot analysis using Goat anti-rabbit IgG:HRP as the secondary antibody. |
| Specificity | Detects ~28.5kDa. May detect larger glycosylated bands ~35-50kDa. |
| Storage | Conjugated antibodies should be stored according to the product label |
| Note | For research use only |
| Entrez | 25240 |
| NCBI | NP_036910.1 |
| Expiration Date | 12 months from date of receipt. |



Immunohistochemistry analysis using Rabbit Anti-Aquaporin 1 Polyclonal Antibody. Tissue: kidney tissue. Species: Rat. Fixation: 4% paraformaldehyde-lysine-periodate. Primary Antibody: Rabbit Anti-Aquaporin 1 Polyclonal Antibody at 1:200 for 75 min at RT. Secondary Antibody: FITC Goat Anti-Rabbit (green) for 1 hour at RT. 4 µm cryostat sections.



Western blot analysis of Rat kidney inner medullary homogenates showing detection of Aquaporin 1 protein using Rabbit Anti-Aquaporin 1 Polyclonal Antibody. Primary Antibody: Rabbit Anti-Aquaporin 1 Polyclonal Antibody at 1:2000. Showing glycosylated and non-glycosylated bands.

Biorbyt Ltd.

7 Signet Court, Swann Road
Cambridge
CB5 8LA
United Kingdom

Email: info@biorbyt.com, support@biorbyt.com

Phone: [+44 \(0\)1223 859353](tel:+44(0)1223859353) | Fax: [+1 \(415\) 651-8558](tel:+1(415)651-8558)

Biorbyt LLC

68 TW Alexander Drive
Research Triangle Park
Durham
NC 27713-2847
United States

Email: info@biorbyt.com, support@biorbyt.com

Phone: [+1 \(415\) 906-5211](tel:+1(415)906-5211) | Fax: [+1 \(415\) 651-8558](tel:+1(415)651-8558)