

## Product Datasheet

### Rabbit NCBP1/CBP80 Antibody (orb1527775)

<b>Catalog Number</b>	orb1527775
<b>Category</b>	Antibodies
<b>Description</b>	NCBP1/CBP80 Antibody
<b>Target</b>	NCBP1/CBP80
<b>Clonality</b>	Polyclonal
<b>Species/Host</b>	Rabbit
<b>Isotype</b>	IgG
<b>Conjugation</b>	Unconjugated
<b>Reactivity</b>	Human, Mouse
<b>Predicted Reactivity</b>	Gallus
<b>Form/Appearance</b>	Liquid
<b>Concentration</b>	1000 µg/ml
<b>Buffer/Preservatives</b>	Tris-citrate/phosphate buffer, pH 7 to 8 containing 0.09% Sodium Azide
<b>Purification</b>	Antigen Affinity Purified
<b>Immunogen</b>	Between 500 and 550
<b>UniProt ID</b>	<b>Q09161</b>
<b>Tested applications</b>	IHC, IP, WB

**Biorbyt Ltd.**

7 Signet Court, Swann Road  
Cambridge  
CB5 8LA  
United Kingdom

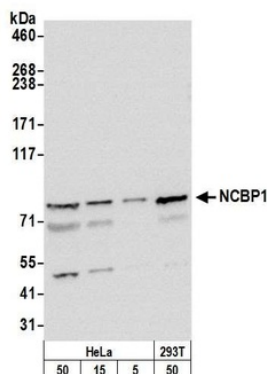
Email: [info@biorbyt.com](mailto:info@biorbyt.com), [support@biorbyt.com](mailto:support@biorbyt.com)  
Phone: [+44 \(0\)1223 859353](tel:+44(0)1223859353) | Fax: [+1 \(415\) 651-8558](tel:+1(415)651-8558)

**Biorbyt LLC**

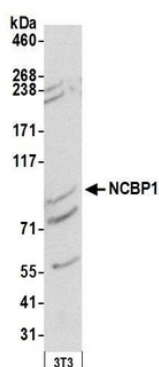
68 TW Alexander Drive  
Research Triangle Park  
Durham  
NC 27713  
United States

Email: [info@biorbyt.com](mailto:info@biorbyt.com), [support@biorbyt.com](mailto:support@biorbyt.com)  
Phone: [+1 \(415\) 906-5211](tel:+1(415)906-5211) | Fax: [+1 \(415\) 651-8558](tel:+1(415)651-8558)

<b>Dilution range</b>	WB - 1:2,000 - 1:10,000; IP - 2 - 10 µg/mg lysate; IHC - 1:500 - 1:2,000. Epitope retrieval with citrate buffer pH 6.0 is recommended for FFPE tissue sections.
<b>Application notes</b>	Format: Whole IgG
<b>Antibody Type</b>	Primary Antibody
<b>Storage</b>	2 - 8°C
<b>Note</b>	For research use only
<b>NCBI</b>	<a href="#">NP_002477.1</a>
<b>Expiration Date</b>	12 months from date of receipt.



Detection of human NCBP1 by western blot. Samples: Whole cell lysate from HeLa, (5, 15 and 50 µg) , and HEK293T (50 µg) cells prepared using NETN lysis buffer. Antibody: Affinity purified rabbit anti-NCBP1 antibody orb1527775 used for WB at 0.1 µg/ml. Detection: Chemiluminescence with an exposure time of 30 seconds.



Detection of mouse NCBP1 by western blot. Samples: Whole cell lysate (50 µg) from NIH 3T3 cells prepared using NETN lysis buffer. Antibody: Affinity purified rabbit anti-NCBP1 antibody orb1527775 used for WB at 0.1 µg/ml. Detection: Chemiluminescence with an exposure time of 3 minutes.

**Biorbyt Ltd.**

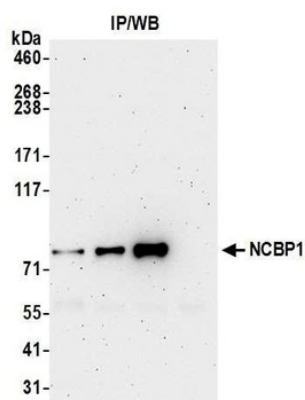
7 Signet Court, Swann Road  
Cambridge  
CB5 8LA  
United Kingdom

Email: [info@biorbyt.com](mailto:info@biorbyt.com), [support@biorbyt.com](mailto:support@biorbyt.com)  
Phone: +44 (0)1223 859353 | Fax: +1 (415) 651-8558

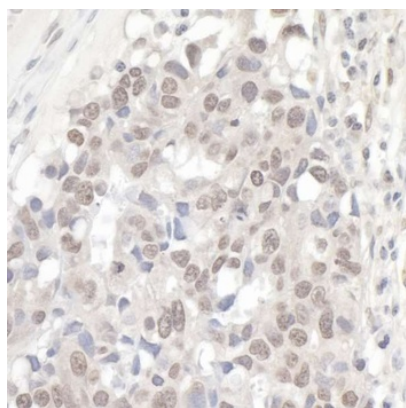
**Biorbyt LLC**

68 TW Alexander Drive  
Research Triangle Park  
Durham  
NC 27713  
United States

Email: [info@biorbyt.com](mailto:info@biorbyt.com), [support@biorbyt.com](mailto:support@biorbyt.com)  
Phone: +1 (415) 906-5211 | Fax: +1 (415) 651-8558



Detection of human NCBP1 by western blot of immunoprecipitates. Samples: Whole cell lysate (0.5 or 1.0 mg per IP reaction; 20% of IP loaded) from HEK293T cells prepared using NETN lysis buffer. Antibodies: Affinity purified rabbit anti-NCBP1 antibody orb1527775 used for IP at 6  $\mu$ g per reaction.



Detection of human NCBP1/CBP80 by immunohistochemistry. Sample: FFPE section of human ovarian carcinoma. Antibody: Affinity purified rabbit anti-NCBP1/CBP80 (Cat. No. orb1527775) used at a dilution of 1: 1, 000 (1 $\mu$ g/ml). Detection: DAB

**Biorbyt Ltd.**

7 Signet Court, Swann Road  
Cambridge  
CB5 8LA  
United Kingdom

Email: [info@biorbyt.com](mailto:info@biorbyt.com), [support@biorbyt.com](mailto:support@biorbyt.com)

Phone: +44 (0)1223 859353 | Fax: +1 (415) 651-8558

**Biorbyt LLC**

68 TW Alexander Drive  
Research Triangle Park  
Durham  
NC 27713  
United States

Email: [info@biorbyt.com](mailto:info@biorbyt.com), [support@biorbyt.com](mailto:support@biorbyt.com)

Phone: +1 (415) 906-5211 | Fax: +1 (415) 651-8558