

## Product Datasheet

### ENaC gamma Antibody (Biotin) (orb152751)

<b>Catalog Number</b>	orb152751
<b>Category</b>	Antibodies
<b>Description</b>	<p>Rabbit polyclonal to ENaC Gamma (Biotin). The Epithelial Sodium Channel (ENaC) is a membrane ion channel permeable to Na<sup>+</sup> ions. It is located in the apical plasma membrane of epithelia in the kidneys, lung, colon, and other tissues where it plays a role in trans epithelial Na<sup>+</sup>-ion transport. Specifically Na<sup>+</sup> transport via ENaC occurs across many epithelial surfaces, and plays a key role in regulating salt and water absorption. ENaCs are composed of three structurally related subunits that form a tetrameric channel, alpha, beta, and gamma. The expression of its alpha and beta subunits is enhanced as keratinocytes differentiate. The beta and gamma-ENaC subunits are essential for edema fluid to exert its maximal effect on net fluid absorption by distal lung epithelia(5). And it has been concluded that the subunits are differentially expressed in the retina of mice with ocular hypertension, therefore the up-regulation of alpha-ENaC proteins could serve as a protection mechanism against elevated intraocular pressure..</p>
<b>Target</b>	ENaC gamma
<b>Clonality</b>	Polyclonal
<b>Species/Host</b>	Rabbit
<b>Conjugation</b>	Biotin
<b>Reactivity</b>	Frog, Hamster, Human, Mouse, Rat
<b>Concentration</b>	1 mg/ml
<b>Buffer/Preservatives</b>	136.36mM Ethanolamine, 133.23 mM Chlorides, 9.55mM Phosphates, 9.55mM Sodium Bicarbonate.
<b>Purification</b>	Protein A Purified

**Biorbyt Ltd.**

7 Signet Court, Swann Road  
Cambridge  
CB5 8LA  
United Kingdom

Email: [info@biorbyt.com](mailto:info@biorbyt.com), [support@biorbyt.com](mailto:support@biorbyt.com)

Phone: [+44 \(0\)1223 859353](tel:+44(0)1223859353) | Fax: [+1 \(415\) 651-8558](tel:+1(415)651-8558)

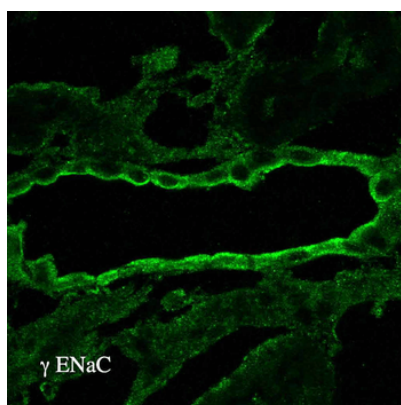
**Biorbyt LLC**

68 TW Alexander Drive  
Research Triangle Park  
Durham  
NC 27713  
United States

Email: [info@biorbyt.com](mailto:info@biorbyt.com), [support@biorbyt.com](mailto:support@biorbyt.com)

Phone: [+1 \(415\) 906-5211](tel:+1(415)906-5211) | Fax: [+1 \(415\) 651-8558](tel:+1(415)651-8558)

<b>Immunogen</b>	Produced against the C-terminal tail (amino acids 629-650) of rat gamma ENaC (antibody designation L550)
<b>UniProt ID</b>	<b>P37091</b>
<b>MW</b>	83kDa
<b>Tested applications</b>	ICC, IF, IHC, WB
<b>Dilution range</b>	WB (1:1000), IHC (1:100)
<b>Application notes</b>	1 µg/ml was sufficient for detection of gamma-ENaC in 20 µg of rat kidney tissue lysate by colorimetric immunoblot analysis using Goat anti-rabbit IgG:HRP as the secondary antibody.
<b>Specificity</b>	Detects ~83kDa.
<b>Storage</b>	Conjugated antibodies should be stored according to the product label
<b>Note</b>	For research use only
<b>Entrez</b>	<b>24768</b>
<b>NCBI</b>	<b>NP_058742</b>
<b>Expiration Date</b>	12 months from date of receipt.



Immunohistochemistry analysis using Rabbit Anti-ENaC Polyclonal Antibody. Tissue: kidney tissue. Species: Rat. Primary Antibody: Rabbit Anti-ENaC Polyclonal Antibody at 1:100. Secondary Antibody: FITC Goat Anti-Rabbit (green).

**Biorbyt Ltd.**

7 Signet Court, Swann Road  
Cambridge  
CB5 8LA  
United Kingdom

Email: [info@biorbyt.com](mailto:info@biorbyt.com), [support@biorbyt.com](mailto:support@biorbyt.com)

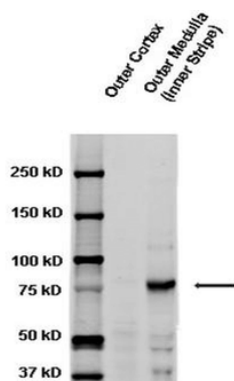
Phone: [+44 \(0\)1223 859353](tel:+44(0)1223859353) | Fax: [+1 \(415\) 651-8558](tel:+1(415)651-8558)

**Biorbyt LLC**

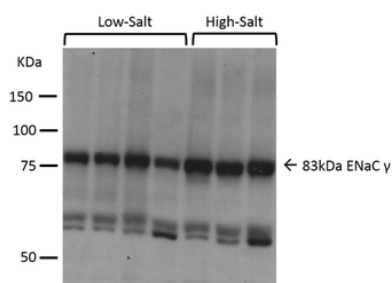
68 TW Alexander Drive  
Research Triangle Park  
Durham  
NC 27713  
United States

Email: [info@biorbyt.com](mailto:info@biorbyt.com), [support@biorbyt.com](mailto:support@biorbyt.com)

Phone: [+1 \(415\) 906-5211](tel:+1(415)906-5211) | Fax: [+1 \(415\) 651-8558](tel:+1(415)651-8558)



Western blot analysis of Rat kidney tissue lysates showing detection of ENaC protein using Rabbit Anti-ENaC Polyclonal Antibody. Primary Antibody: Rabbit Anti-ENaC Polyclonal Antibody at 1:1000.



Western blot analysis of Mouse kidney cortex showing detection of ENaC protein using Rabbit Anti-ENaC Polyclonal Antibody. Primary Antibody: Rabbit Anti-ENaC Polyclonal Antibody at 1:1000. Low-salt diet (lanes 1-4) compared to a high-salt diet (lanes 5-7). 70kDa degradation band observed in low-salt.

**Biorbyt Ltd.**

7 Signet Court, Swann Road  
Cambridge  
CB5 8LA  
United Kingdom

Email: [info@biorbyt.com](mailto:info@biorbyt.com), [support@biorbyt.com](mailto:support@biorbyt.com)

Phone: +44 (0)1223 859353 | Fax: +1 (415) 651-8558

**Biorbyt LLC**

68 TW Alexander Drive  
Research Triangle Park  
Durham  
NC 27713  
United States

Email: [info@biorbyt.com](mailto:info@biorbyt.com), [support@biorbyt.com](mailto:support@biorbyt.com)

Phone: +1 (415) 906-5211 | Fax: +1 (415) 651-8558