

Product Datasheet

ENaC alpha Antibody (APC) (orb152716)

Catalog Number	orb152716
Category	Antibodies
Description	Rabbit polyclonal antibody against ENaC Alpha conjugated to APC
Target	ENaC alpha
Clonality	Polyclonal
Species/Host	Rabbit
Conjugation	APC
Reactivity	Frog, Human, Mouse, Rat
Concentration	1 mg/ml
Buffer/Preservatives	95.46mM Phosphate, 2.48mM MES and 2mM EDTA
Purification	Protein A Purified
Immunogen	Produced against a synthetic peptide mapping to the N-terminal of the alpha subunit (amino acids 46-68) of rat Alpha ENaC (antibody designation 3560-2).
UniProt ID	Q6IRJ1
MW	85kDa
Tested applications	ICC, IF, IHC, IP, WB
Dilution range	WB (1:1000), ICC/IF (1:400); IHC (1:25)

Biorbyt Ltd.

7 Signet Court, Swann Road
Cambridge
CB5 8LA
United Kingdom

Email: info@biorbyt.com, support@biorbyt.com

Phone: [+44 \(0\)1223 859353](tel:+44(0)1223859353) | Fax: [+1 \(415\) 651-8558](tel:+1(415)651-8558)

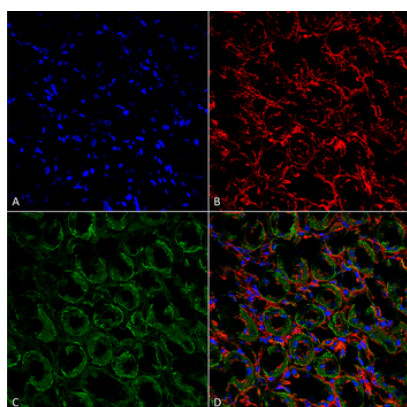
Biorbyt LLC

68 TW Alexander Drive
Research Triangle Park
Durham
NC 27713
United States

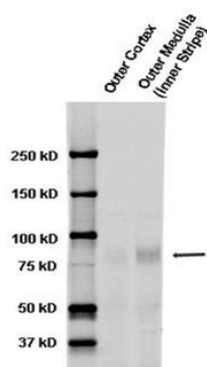
Email: info@biorbyt.com, support@biorbyt.com

Phone: [+1 \(415\) 906-5211](tel:+1(415)906-5211) | Fax: [+1 \(415\) 651-8558](tel:+1(415)651-8558)

Application notes	1 µg/ml was sufficient for detection of alpha-ENaC in 35 µg of rat kidney tissue lysate by colorimetric immunoblot analysis using Goat anti-rabbit IgG:HRP as the secondary antibody.
Specificity	Detects ~85kDa.
Storage	Conjugated antibodies should be stored according to the product label
Note	For research use only
Entrez	25122
NCBI	NP_113736
Expiration Date	12 months from date of receipt.



Immunohistochemistry analysis using Rabbit Anti-ENaC Polyclonal Antibody. Tissue: kidney tissue. Species: Rat. Fixation: Formalin Fixed Paraffin-Embedded. Primary Antibody: Rabbit Anti-ENaC Polyclonal Antibody at 1:25 for 1 hour at RT. Secondary Antibody: Goat Anti-Rabbit IgG: Alexa Fluor 488. Counterstain: Actin-binding Phalloidin-Alexa Fluor 633; DAPI (blue) nuclear stain. Magnification: 63X. (A) DAPI (blue) nuclear stain. (B) Phalloidin Alex Fluor 633 F-Actin stain. (C) ENaC Antibody (D) Composite



Western blot analysis of Rat kidney tissue lysates showing detection of ENaC protein using Rabbit Anti-ENaC Polyclonal Antibody. Primary Antibody: Rabbit Anti-ENaC Polyclonal Antibody at 1:1000.

Biorbyt Ltd.

7 Signet Court, Swann Road
Cambridge
CB5 8LA
United Kingdom

Email: info@biorbyt.com, support@biorbyt.com

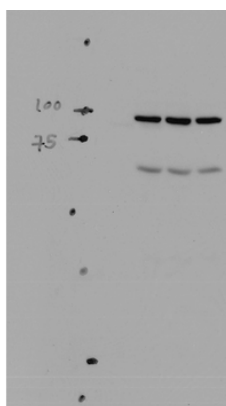
Phone: [+44 \(0\)1223 859353](tel:+44(0)1223859353) | Fax: [+1 \(415\) 651-8558](tel:+1(415)651-8558)

Biorbyt LLC

68 TW Alexander Drive
Research Triangle Park
Durham
NC 27713
United States

Email: info@biorbyt.com, support@biorbyt.com

Phone: [+1 \(415\) 906-5211](tel:+1(415)906-5211) | Fax: [+1 \(415\) 651-8558](tel:+1(415)651-8558)



Western blot analysis of Mouse kidney tissue lysates showing detection of ENaC protein using Rabbit Anti-ENaC Polyclonal Antibody. Primary Antibody: Rabbit Anti-ENaC Polyclonal Antibody at 1:1000.

Biorbyt Ltd.

7 Signet Court, Swann Road
Cambridge
CB5 8LA
United Kingdom

Email: info@biorbyt.com, support@biorbyt.com

Phone: [+44 \(0\)1223 859353](tel:+44(0)1223859353) | Fax: [+1 \(415\) 651-8558](tel:+1(415)651-8558)

Biorbyt LLC

68 TW Alexander Drive
Research Triangle Park
Durham
NC 27713
United States

Email: info@biorbyt.com, support@biorbyt.com

Phone: [+1 \(415\) 906-5211](tel:+1(415)906-5211) | Fax: [+1 \(415\) 651-8558](tel:+1(415)651-8558)