

## Product Datasheet

### Rabbit SET Antibody (orb1526942)

|                             |  |
|-----------------------------|--|
| <b>Catalog Number</b>       | orb1526942   |
| <b>Category</b>             | Antibodies   |
| <b>Description</b>          | SET Antibody   |
| <b>Target</b>               | SET  |
| <b>Clonality</b>            | Polyclonal   |
| <b>Species/Host</b>         | Rabbit   |
| <b>Isotype</b>              | IgG  |
| <b>Conjugation</b>          | Unconjugated   |
| <b>Reactivity</b>           | Human, Mouse   |
| <b>Predicted Reactivity</b> | Rat  |
| <b>Form/Appearance</b>      | Liquid   |
| <b>Concentration</b>        | 200 µg/ml  |
| <b>Buffer/Preservatives</b> | Tris-buffered Saline containing 0.1% rAlbumin and 0.09% Sodium Azide |
| <b>Purification</b>         | Antigen Affinity Purified  |
| <b>Immunogen</b>            | Between 150 and 200  |
| <b>UniProt ID</b>           | <b>Q01105</b>  |
| <b>Tested applications</b>  | IHC, IP, WB  |

**Biorbyt Ltd.**

7 Signet Court, Swann Road  
Cambridge  
CB5 8LA  
United Kingdom

Email: [info@biorbyt.com](mailto:info@biorbyt.com), [support@biorbyt.com](mailto:support@biorbyt.com)

Phone: [+44 \(0\)1223 859353](tel:+44(0)1223859353) | Fax: [+1 \(415\) 651-8558](tel:+1(415)651-8558)

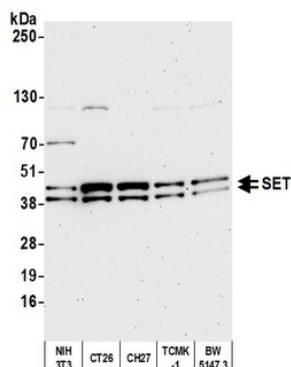
**Biorbyt LLC**

68 TW Alexander Drive  
Research Triangle Park  
Durham  
NC 27713-2847  
United States

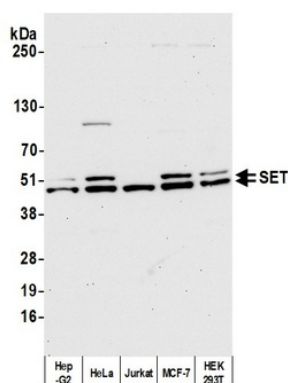
Email: [info@biorbyt.com](mailto:info@biorbyt.com), [support@biorbyt.com](mailto:support@biorbyt.com)

Phone: [+1 \(415\) 906-5211](tel:+1(415)906-5211) | Fax: [+1 \(415\) 651-8558](tel:+1(415)651-8558)

|                          |   |
|--------------------------|---|
| <b>Dilution range</b>    | WB - 1:2,000 - 1:10,000; IP - 2 - 10 µg/mg lysate; IHC - 1:500 - 1:2,000. Epitope retrieval with citrate buffer pH 6.0 is recommended for FFPE tissue sections. |
| <b>Application notes</b> | Format: Whole IgG   |
| <b>Antibody Type</b>     | Primary Antibody  |
| <b>Storage</b>           | 2 - 8°C   |
| <b>Note</b>              | For research use only   |
| <b>NCBI</b>              | <a href="#">NP_001116293.1</a>  |
| <b>Expiration Date</b>   | 12 months from date of receipt.   |



Detection of mouse SET by western blot. Samples: Whole cell lysate (10 µg) from NIH 3T3, CT26, CH27, TCMK-1, and BW5147.3 cells prepared using NETN lysis buffer. Antibody: Affinity purified rabbit anti-SET antibody orb1526942 used for WB at 0.04 µg/ml. Detection: Chemiluminescence with an exposure time of 75 seconds.



Detection of human SET by western blot. Samples: Whole cell lysate (10 µg) from Hep-G2, HeLa, Jurkat, MCF-7, and HEK293T cells prepared using NETN lysis buffer. Antibody: Affinity purified rabbit anti-SET antibody orb1526942 used for WB at 0.04 µg/ml. Detection: Chemiluminescence with an exposure time of 30 seconds.

**Biorbyt Ltd.**

7 Signet Court, Swann Road  
Cambridge  
CB5 8LA  
United Kingdom

Email: [info@biorbyt.com](mailto:info@biorbyt.com), [support@biorbyt.com](mailto:support@biorbyt.com)

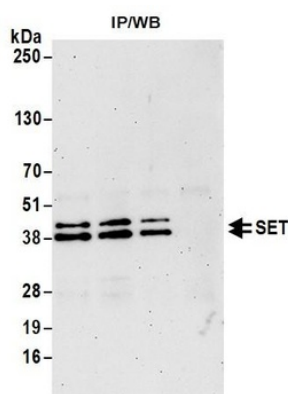
Phone: +44 (0)1223 859353 | Fax: +1 (415) 651-8558

**Biorbyt LLC**

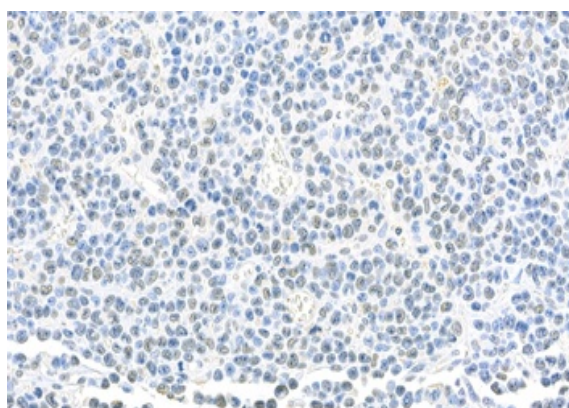
68 TW Alexander Drive  
Research Triangle Park  
Durham  
NC 27713-2847  
United States

Email: [info@biorbyt.com](mailto:info@biorbyt.com), [support@biorbyt.com](mailto:support@biorbyt.com)

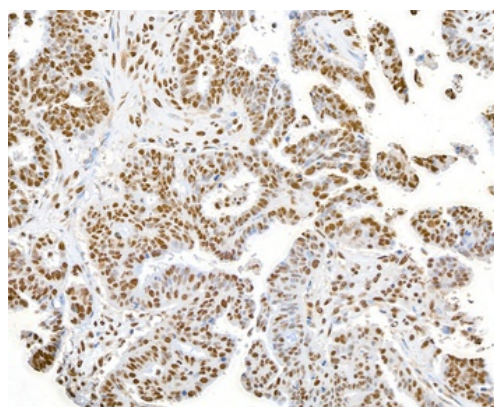
Phone: +1 (415) 906-5211 | Fax: +1 (415) 651-8558



Detection of human SET by western blot of immunoprecipitates. Samples: Whole cell lysate (1.0 mg per IP reaction; 20% of IP loaded) from HEK293T cells prepared using NETN lysis buffer. Antibodies: Affinity purified rabbit anti-SET antibody orb1526942 used for IP at 6  $\mu$ g per reaction.



Detection of mouse SET by immunohistochemistry. Sample: FFPE section of mouse plasmacytoma. Antibody: Affinity purified rabbit anti-SET (Cat. No. orb1526942) used at a dilution of 1: 1, 000 (0.2 $\mu$ g/ml). Detection: DAB



Detection of human SET by immunohistochemistry. Sample: FFPE section of human ovarian carcinoma. Antibody: Affinity purified rabbit anti-SET (Cat. No. orb1526942) used at a dilution of 1: 1, 000 (0.2 $\mu$ g/ml). Detection: DAB

**Biorbyt Ltd.**

7 Signet Court, Swann Road  
Cambridge  
CB5 8LA  
United Kingdom

Email: [info@biorbyt.com](mailto:info@biorbyt.com), [support@biorbyt.com](mailto:support@biorbyt.com)

Phone: +44 (0)1223 859353 | Fax: +1 (415) 651-8558

**Biorbyt LLC**

68 TW Alexander Drive  
Research Triangle Park  
Durham  
NC 27713-2847  
United States

Email: [info@biorbyt.com](mailto:info@biorbyt.com), [support@biorbyt.com](mailto:support@biorbyt.com)

Phone: +1 (415) 906-5211 | Fax: +1 (415) 651-8558