

Product Datasheet

Rabbit NHERF1 Antibody (orb1525671)

Catalog Number	orb1525671
Category	Antibodies
Description	NHERF1 Antibody
Target	NHERF1
Clonality	Polyclonal
Species/Host	Rabbit
Isotype	IgG
Conjugation	Unconjugated
Reactivity	Human
Predicted Reactivity	Bovine, Gallus, Mouse, Rat
Form/Appearance	Liquid
Concentration	200 µg/ml
Buffer/Preservatives	Tris-buffered Saline containing 0.1% rAlbumin and 0.09% Sodium Azide
Purification	Antigen Affinity Purified
Immunogen	Between 308 and C-terminus
UniProt ID	O14745
Tested applications	IHC, IP, WB

Biorbyt Ltd.

7 Signet Court, Swann Road
Cambridge
CB5 8LA
United Kingdom

Email: info@biorbyt.com, support@biorbyt.com

Phone: [+44 \(0\)1223 859353](tel:+44(0)1223859353) | Fax: [+1 \(415\) 651-8558](tel:+1(415)651-8558)

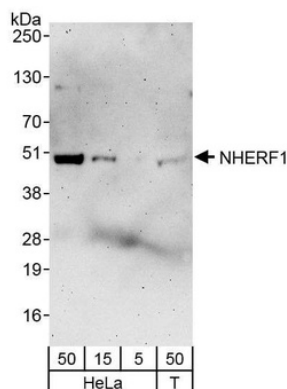
Biorbyt LLC

68 TW Alexander Drive
Research Triangle Park
Durham
NC 27713-2847
United States

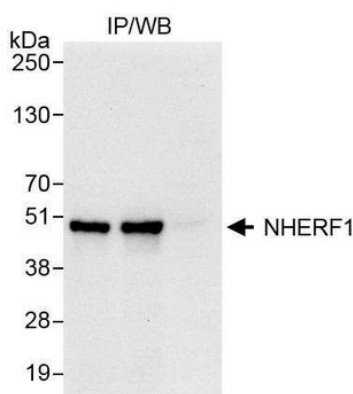
Email: info@biorbyt.com, support@biorbyt.com

Phone: [+1 \(415\) 906-5211](tel:+1(415)906-5211) | Fax: [+1 \(415\) 651-8558](tel:+1(415)651-8558)

Dilution range	WB - 1:2,000 - 1:10,000; IP - 2 - 5 µg/mg lysate; IHC - 1:100 - 1:500. Epitope retrieval with citrate buffer pH 6.0 is recommended for FFPE tissue sections.
Application notes	Format: Whole IgG
Antibody Type	Primary Antibody
Storage	2 - 8°C
Note	For research use only
NCBI	NP_004243.1
Expiration Date	12 months from date of receipt.



Detection of human NHERF1 by western blot. Samples: Whole cell lysate from HeLa (5, 15 and 50 µg) and HEK293T (T; 50 µg) cells. Antibodies: Affinity purified rabbit anti-NHERF1 antibody orb1525671 used for WB at 0.04 µg/ml. Detection: Chemiluminescence with exposure time of 3 minutes.



Detection of human NHERF1 by western blot of immunoprecipitates. Samples: Whole cell lysate from HeLa (1 mg for IP, 20% of IP loaded) cells. Antibodies: Affinity purified rabbit anti-NHERF1 antibody orb1525671 used for WB at 1 µg/ml and for IP at 3 µg/mg lysate.

Biorbyt Ltd.

7 Signet Court, Swann Road
Cambridge
CB5 8LA
United Kingdom

Email: info@biorbyt.com, support@biorbyt.com

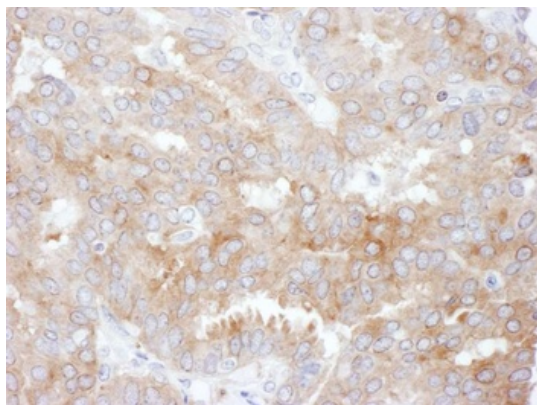
Phone: +44 (0)1223 859353 | Fax: +1 (415) 651-8558

Biorbyt LLC

68 TW Alexander Drive
Research Triangle Park
Durham
NC 27713-2847
United States

Email: info@biorbyt.com, support@biorbyt.com

Phone: +1 (415) 906-5211 | Fax: +1 (415) 651-8558



Detection of human NHERF1 by immunohistochemistry. Sample: FFPE section of human breast carcinoma. Antibody: Affinity purified rabbit anti-NHERF1 (Cat. No. orb1525671) used at a dilution of 1: 200 (1 μ g/ml). Detection: DAB

Biorbyt Ltd.

7 Signet Court, Swann Road
Cambridge
CB5 8LA
United Kingdom

Email: info@biorbyt.com, support@biorbyt.com

Phone: [+44 \(0\)1223 859353](tel:+44(0)1223859353) | Fax: [+1 \(415\) 651-8558](tel:+1(415)651-8558)

Biorbyt LLC

68 TW Alexander Drive
Research Triangle Park
Durham
NC 27713-2847
United States

Email: info@biorbyt.com, support@biorbyt.com

Phone: [+1 \(415\) 906-5211](tel:+1(415)906-5211) | Fax: [+1 \(415\) 651-8558](tel:+1(415)651-8558)