

Product Datasheet

Rabbit NSD2 Antibody (orb1525470)

Catalog Number	orb1525470
Category	Antibodies
Description	NSD2 Antibody
Target	NSD2
Clonality	Polyclonal
Species/Host	Rabbit
Isotype	IgG
Conjugation	Unconjugated
Reactivity	Human
Form/Appearance	Liquid
Concentration	200 µg/ml
Buffer/Preservatives	Tris-buffered Saline containing 0.1% rAlbumin and 0.09% Sodium Azide
Purification	Antigen Affinity Purified
Immunogen	Between 525 and 575
UniProt ID	O96028
Tested applications	WB
Dilution range	WB - 1:2,000 - 1:10,000; IP - Not recommended
Application notes	Format: Whole IgG

Biorbyt Ltd.

7 Signet Court, Swann Road
Cambridge
CB5 8LA
United Kingdom

Email: info@biorbyt.com, support@biorbyt.com

Phone: [+44 \(0\)1223 859353](tel:+44(0)1223859353) | Fax: [+1 \(415\) 651-8558](tel:+1(415)651-8558)

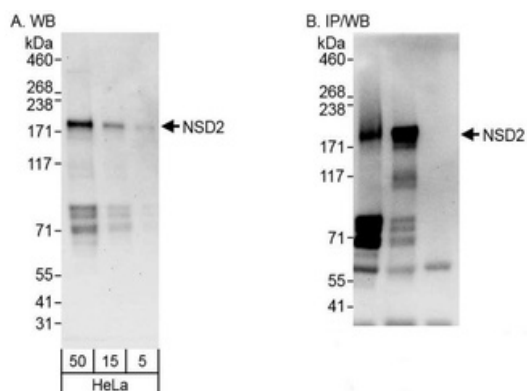
Biorbyt LLC

68 TW Alexander Drive
Research Triangle Park
Durham
NC 27713-2847
United States

Email: info@biorbyt.com, support@biorbyt.com

Phone: [+1 \(415\) 906-5211](tel:+1(415)906-5211) | Fax: [+1 \(415\) 651-8558](tel:+1(415)651-8558)

Antibody Type	Primary Antibody
Storage	2 - 8°C
Note	For research use only
NCBI	NP_579877.1
Expiration Date	12 months from date of receipt.



Detection of human NSD2 by western blot and immunoprecipitation. Samples: Whole cell lysate (5, 15 and 50 µg for WB; 1 mg for IP, 20% of IP loaded) from HeLa cells. Antibodies: Affinity purified rabbit anti-NSD2 antibody orb1525470 used for WB at 0.04 µg/ml (A) and 0.4 µg/ml (B) and used for IP at 6 µg/mg lysate. NSD2 was more efficiently immunoprecipitated by rabbit anti-NSD2 antibody, which recognizes a downstream epitope. Detection: Chemiluminescence with exposure times of 30 seconds (A and B).

Biorbyt Ltd.

7 Signet Court, Swann Road
Cambridge
CB5 8LA
United Kingdom

Email: info@biorbyt.com, support@biorbyt.com

Phone: +44 (0)1223 859353 | Fax: +1 (415) 651-8558

Biorbyt LLC

68 TW Alexander Drive
Research Triangle Park
Durham
NC 27713-2847
United States

Email: info@biorbyt.com, support@biorbyt.com

Phone: +1 (415) 906-5211 | Fax: +1 (415) 651-8558