

Product Datasheet

Rabbit SIPA1L3 Antibody (orb1523518)

Catalog Number	orb1523518
Category	Antibodies
Description	SIPA1L3 Antibody
Target	SIPA1L3
Clonality	Polyclonal
Species/Host	Rabbit
Isotype	IgG
Conjugation	Unconjugated
Reactivity	Human
Form/Appearance	Liquid
Concentration	1000 µg/ml
Buffer/Preservatives	Tris-citrate/phosphate buffer, pH 7 to 8 containing 0.09% Sodium Azide
Purification	Antigen Affinity Purified
Immunogen	Between 1 and 50
UniProt ID	O60292
Tested applications	WB
Dilution range	WB - 1:1,000 - 1:5,000; IP - Not recommended
Application notes	Format: Whole IgG

Biorbyt Ltd.

7 Signet Court, Swann Road
Cambridge
CB5 8LA
United Kingdom

Email: info@biorbyt.com, support@biorbyt.com

Phone: [+44 \(0\)1223 859353](tel:+44(0)1223859353) | Fax: [+1 \(415\) 651-8558](tel:+1(415)651-8558)

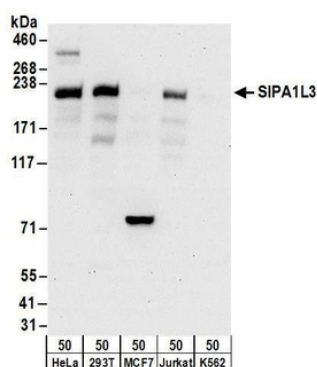
Biorbyt LLC

68 TW Alexander Drive
Research Triangle Park
Durham
NC 27713
United States

Email: info@biorbyt.com, support@biorbyt.com

Phone: [+1 \(415\) 906-5211](tel:+1(415)906-5211) | Fax: [+1 \(415\) 651-8558](tel:+1(415)651-8558)

Antibody Type	Primary Antibody
Storage	2 - 8°C
Note	For research use only
NCBI	NP_055888.1
Expiration Date	12 months from date of receipt.



Detection of human SIPA1L3 by western blot. Samples: Whole cell lysate (50 µg) from HeLa, HEK293T, MCF-7, Jurkat, and K-562 cells. Antibodies: Affinity purified rabbit anti-SIPA1L3 antibody orb1523518 used for WB at 0.4 µg/ml. Detection: Chemiluminescence with an exposure time of 30 seconds.

Biorbyt Ltd.

7 Signet Court, Swann Road
Cambridge
CB5 8LA
United Kingdom

Email: info@biorbyt.com, support@biorbyt.com

Phone: [+44 \(0\)1223 859353](tel:+44(0)1223859353) | Fax: [+1 \(415\) 651-8558](tel:+1(415)651-8558)

Biorbyt LLC

68 TW Alexander Drive
Research Triangle Park
Durham
NC 27713
United States

Email: info@biorbyt.com, support@biorbyt.com

Phone: [+1 \(415\) 906-5211](tel:+1(415)906-5211) | Fax: [+1 \(415\) 651-8558](tel:+1(415)651-8558)