

## Product Datasheet

### TLR4 Antibody (APC) (orb152201)

<b>Catalog Number</b>	orb152201
<b>Category</b>	Antibodies
<b>Description</b>	<p>Rabbit polyclonal to TLR4 (APC). The Toll-like receptor (TLR) family in mammal comprises a family of trans-membrane proteins characterized by multiple copies of leucine rich repeats in the extracellular domain and 1L-1 receptor motif in the cytoplasmic domain. Like its counterparts in Drosophila, TLRs signal through adaptor molecules. The TLR family is a phylo-genetically conserved mediator of innate immunity that is essential for microbial recognition. Ten human homologs of TLRs (TLR1-10) have been described. Amount this family of receptors, TLR2 and TLR4 have been most studied. These studies have suggested that TLR2 and TLR4 may serve as potential main mediators of LPS signaling (4,5). The mouse TLR4 cDNA codes for a protein consisting of 839 amino acids, with an approximate molecular weight of 90kDa..</p>
<b>Target</b>	TLR4
<b>Clonality</b>	Polyclonal
<b>Species/Host</b>	Rabbit
<b>Conjugation</b>	APC
<b>Reactivity</b>	Human, Mouse
<b>Concentration</b>	1 mg/ml
<b>Buffer/Preservatives</b>	95.46mM Phosphate, 2.48mM MES and 2mM EDTA
<b>Purification</b>	Protein A Purified
<b>Immunogen</b>	Developed against a synthetic peptide corresponding to amino acids 420-435 of human TLR4

**Biorbyt Ltd.**

7 Signet Court, Swann Road  
Cambridge  
CB5 8LA  
United Kingdom

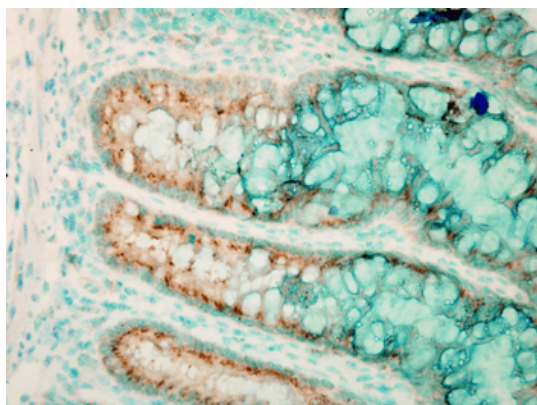
Email: [info@biorbyt.com](mailto:info@biorbyt.com), [support@biorbyt.com](mailto:support@biorbyt.com)  
Phone: [+44 \(0\)1223 859353](tel:+44(0)1223859353) | Fax: [+1 \(415\) 651-8558](tel:+1(415)651-8558)

**Biorbyt LLC**

68 TW Alexander Drive  
Research Triangle Park  
Durham  
NC 27713  
United States

Email: [info@biorbyt.com](mailto:info@biorbyt.com), [support@biorbyt.com](mailto:support@biorbyt.com)  
Phone: [+1 \(415\) 906-5211](tel:+1(415)906-5211) | Fax: [+1 \(415\) 651-8558](tel:+1(415)651-8558)

<b>UniProt ID</b>	<b>O00206</b>
<b>MW</b>	75-80kDa
<b>Tested applications</b>	FACS, FC, ICC, IF, IHC, WB
<b>Dilution range</b>	WB (1:500), IHC (1:50)
<b>Application notes</b>	2 µg/ml was sufficient for detection of TLR4 in 100 ng of partial recombinant mouse TLR4 protein by colorimetric immunoblot analysis using Goat anti-rabbit IgG:HRP as the secondary antibody.
<b>Specificity</b>	Detects ~75-80kDa when tested against partial recombinant mouse TLR4 (extra-cellular portion plus His-tag).
<b>Storage</b>	Conjugated antibodies should be stored according to the product label
<b>Note</b>	For research use only
<b>Entrez</b>	<b>7099</b>
<b>NCBI</b>	<b>NP_612564.1</b>
<b>Expiration Date</b>	12 months from date of receipt.



Immunohistochemistry analysis using Rabbit Anti-TLR4 Polyclonal Antibody. Tissue: colon colitis. Species: Mouse. Fixation: Formalin. Primary Antibody: Rabbit Anti-TLR4 Polyclonal Antibody at 1:100000 for 12 hours at 4°C. Secondary Antibody: Biotin Goat Anti-Rabbit at 1:2000 for 1 hour at RT. Counterstain: Methyl Green at 200uL for 2 min at RT. Localization: Inflammatory cells.

**Biorbyt Ltd.**

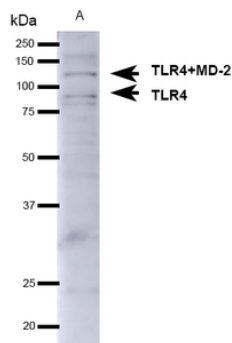
7 Signet Court, Swann Road  
Cambridge  
CB5 8LA  
United Kingdom

Email: [info@biorbyt.com](mailto:info@biorbyt.com), [support@biorbyt.com](mailto:support@biorbyt.com)  
Phone: [+44 \(0\)1223 859353](tel:+44(0)1223859353) | Fax: [+1 \(415\) 651-8558](tel:+1(415)651-8558)

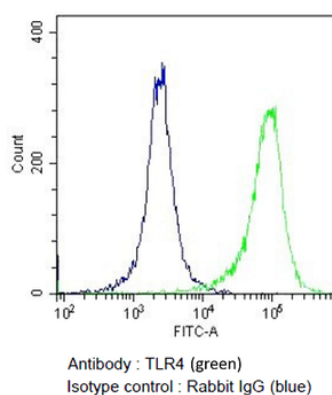
**Biorbyt LLC**

68 TW Alexander Drive  
Research Triangle Park  
Durham  
NC 27713  
United States

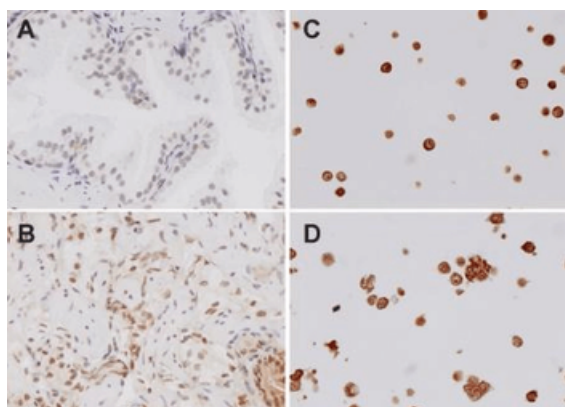
Email: [info@biorbyt.com](mailto:info@biorbyt.com), [support@biorbyt.com](mailto:support@biorbyt.com)  
Phone: [+1 \(415\) 906-5211](tel:+1(415)906-5211) | Fax: [+1 \(415\) 651-8558](tel:+1(415)651-8558)



Western blot analysis of Mouse brain showing detection of ~75-80kDa TLR4 protein using Rabbit Anti-TLR4 Polyclonal Antibody. Lane 1: Molecular Weight Ladder. Lane 2: Mouse Brain. Load: 15 µg. Block: 5% Skim Milk in 1X TBST. Primary Antibody: Rabbit Anti-TLR4 Polyclonal Antibody at 1:1000 for 1 hour at RT. Secondary Antibody: Goat Anti-Rabbit IgG: HRP at 1:4000 for 1 hour at RT. Predicted/Observed Size: ~75-80kDa. Other Band (s): ~130kDa (TLR4+MD-2).



Flow Cytometry analysis using Rabbit Anti-TLR4 Polyclonal Antibody. Tissue: Monocytic Leukemia cells (THP-1). Species: Human. Fixation: 2% Formaldehyde for 10 min at RT. Primary Antibody: Rabbit Anti-TLR4 Polyclonal Antibody at 2 µg/10<sup>6</sup> cells for 60 min at 37°C. Secondary Antibody: Goat Anti-Rabbit Dylight 488 at 1:200 for 40 min at 37°C.



Immunohistochemistry analysis using Rabbit Anti-TLR4 Polyclonal Antibody. Tissue: spleen tissue. Species: Mouse. Primary Antibody: Rabbit Anti-TLR4 Polyclonal Antibody at 1:100.

#### Biorbyt Ltd.

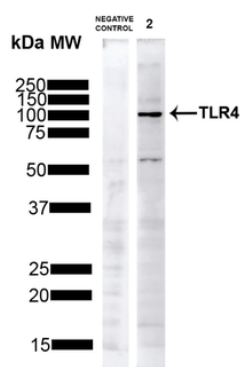
7 Signet Court, Swann Road  
Cambridge  
CB5 8LA  
United Kingdom

Email: [info@biorbyt.com](mailto:info@biorbyt.com), [support@biorbyt.com](mailto:support@biorbyt.com)  
Phone: +44 (0)1223 859353 | Fax: +1 (415) 651-8558

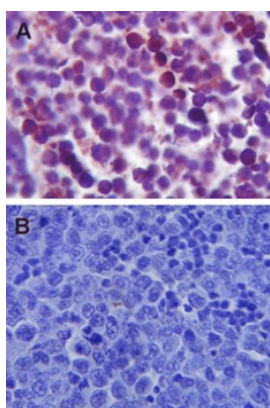
#### Biorbyt LLC

68 TW Alexander Drive  
Research Triangle Park  
Durham  
NC 27713  
United States

Email: [info@biorbyt.com](mailto:info@biorbyt.com), [support@biorbyt.com](mailto:support@biorbyt.com)  
Phone: +1 (415) 906-5211 | Fax: +1 (415) 651-8558



Western blot analysis of Human HeLa showing detection of ~75-80kDa TLR4 protein using Rabbit Anti-TLR4 Polyclonal Antibody. Lane 1: Molecular Weight Ladder. Lane 2: Human HeLa. Load: 10  $\mu$ g. Block: 5% Skim Milk in 1X TBST. Primary Antibody: Rabbit Anti-TLR4 Polyclonal Antibody at 1:1000 for 1 hour at RT. Secondary Antibody: Goat Anti-Rabbit IgG: HRP at 1:4000 for 1 hour at RT. Predicted/Observed Size: ~75-80kDa. Other Band (s): ~60kDa (observed degradation bands (PMID: 16885150)).



Immunohistochemistry analysis using Rabbit Anti-TLR4 Polyclonal Antibody. Tissue: Spleen tissue. Species: Mouse. Primary Antibody: Rabbit Anti-TLR4 Polyclonal Antibody at 1:100.

**Biorbyt Ltd.**

7 Signet Court, Swann Road  
Cambridge  
CB5 8LA  
United Kingdom

Email: [info@biorbyt.com](mailto:info@biorbyt.com), [support@biorbyt.com](mailto:support@biorbyt.com)

Phone: [+44 \(0\)1223 859353](tel:+44(0)1223859353) | Fax: [+1 \(415\) 651-8558](tel:+1(415)651-8558)

**Biorbyt LLC**

68 TW Alexander Drive  
Research Triangle Park  
Durham  
NC 27713  
United States

Email: [info@biorbyt.com](mailto:info@biorbyt.com), [support@biorbyt.com](mailto:support@biorbyt.com)

Phone: [+1 \(415\) 906-5211](tel:+1(415)906-5211) | Fax: [+1 \(415\) 651-8558](tel:+1(415)651-8558)