

## Product Datasheet

### Rabbit CCDC186 Antibody (orb1520551)

|                             |  |
|-----------------------------|--|
| <b>Catalog Number</b>       | orb1520551   |
| <b>Category</b>             | Antibodies   |
| <b>Description</b>          | CCDC186 Antibody   |
| <b>Target</b>               | CCDC186  |
| <b>Clonality</b>            | Polyclonal   |
| <b>Species/Host</b>         | Rabbit   |
| <b>Isotype</b>              | IgG  |
| <b>Conjugation</b>          | Unconjugated   |
| <b>Reactivity</b>           | Human  |
| <b>Form/Appearance</b>      | Liquid   |
| <b>Concentration</b>        | 1000 µg/ml   |
| <b>Buffer/Preservatives</b> | Tris-citrate/phosphate buffer, pH 7 to 8 containing 0.09% Sodium Azide |
| <b>Purification</b>         | Antigen Affinity Purified  |
| <b>Immunogen</b>            | Between 1 and 50   |
| <b>UniProt ID</b>           | <b>Q7Z3E2</b>  |
| <b>Tested applications</b>  | IP   |
| <b>Dilution range</b>       | IP - 8 - 15 µl/mg lysate   |
| <b>Application notes</b>    | Format: Whole IgG  |

**Biorbyt Ltd.**

7 Signet Court, Swann Road  
Cambridge  
CB5 8LA  
United Kingdom

Email: [info@biorbyt.com](mailto:info@biorbyt.com), [support@biorbyt.com](mailto:support@biorbyt.com)

Phone: [+44 \(0\)1223 859353](tel:+44(0)1223859353) | Fax: [+1 \(415\) 651-8558](tel:+1(415)651-8558)

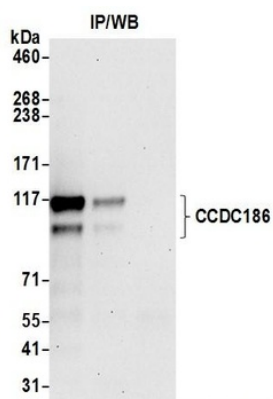
**Biorbyt LLC**

68 TW Alexander Drive  
Research Triangle Park  
Durham  
NC 27713-2847  
United States

Email: [info@biorbyt.com](mailto:info@biorbyt.com), [support@biorbyt.com](mailto:support@biorbyt.com)

Phone: [+1 \(415\) 906-5211](tel:+1(415)906-5211) | Fax: [+1 \(415\) 651-8558](tel:+1(415)651-8558)

|                        |                                 |
|------------------------|---------------------------------|
| <b>Antibody Type</b>   | Primary Antibody                |
| <b>Storage</b>         | 2 - 8°C                         |
| <b>Note</b>            | For research use only           |
| <b>NCBI</b>            | <b>NP_694981.1</b>              |
| <b>Expiration Date</b> | 12 months from date of receipt. |



Detection of human CCDC186 by western blot of immunoprecipitates. Samples: Whole cell lysate (1.0 mg per IP reaction; 20% of IP loaded) from HeLa cells prepared using NETN lysis buffer. Antibodies: Affinity purified rabbit anti-CCDC186 antibody (orb1520551) used for IP at 6 µg per reaction.

**Biorbyt Ltd.**

7 Signet Court, Swann Road  
Cambridge  
CB5 8LA  
United Kingdom

Email: [info@biorbyt.com](mailto:info@biorbyt.com), [support@biorbyt.com](mailto:support@biorbyt.com)

Phone: [+44 \(0\)1223 859353](tel:+44(0)1223859353) | Fax: [+1 \(415\) 651-8558](tel:+1(415)651-8558)

**Biorbyt LLC**

68 TW Alexander Drive  
Research Triangle Park  
Durham  
NC 27713-2847  
United States

Email: [info@biorbyt.com](mailto:info@biorbyt.com), [support@biorbyt.com](mailto:support@biorbyt.com)

Phone: [+1 \(415\) 906-5211](tel:+1(415)906-5211) | Fax: [+1 \(415\) 651-8558](tel:+1(415)651-8558)