

Product Datasheet

AHA1 Antibody (PerCP) (orb152019)

Catalog Number	orb152019
Category	Antibodies
Description	Rabbit polyclonal to Aha1 (PerCP). Aha1 is a member of the Hsp90 cochaperone family, and is thought to stimulate Hsp90 ATPase activity by competing with p23 and other co-chaperones for Hsp90 binding. It may affect a step in the endoplasmic reticulum to Golgi trafficking. Aha1 also interacts with HSPCA/Hsp90 and with the cytoplasmic tail of the vesicular stomatitis virus glycoproteins (VSV G). Aha1 is expressed in numerous tissues, including the brain, heart, skeletal muscle, and kidney, and at low levels, the liver and placenta. Aha1 might be a potential therapeutic strategy to increase sensitivity to HSP inhibitors..
Target	AHA1
Clonality	Polyclonal
Species/Host	Rabbit
Conjugation	PerCP
Reactivity	Human, Mouse, Rat
Concentration	1 mg/ml
Buffer/Preservatives	95.46mM Phosphate, 2.48mM MES and 2mM EDTA
Purification	Protein A Purified
Immunogen	Recombinant Full Length Mouse Aha1 Protein
UniProt ID	Q8BK64
MW	38kDa

Biorbyt Ltd.

7 Signet Court, Swann Road
Cambridge
CB5 8LA
United Kingdom

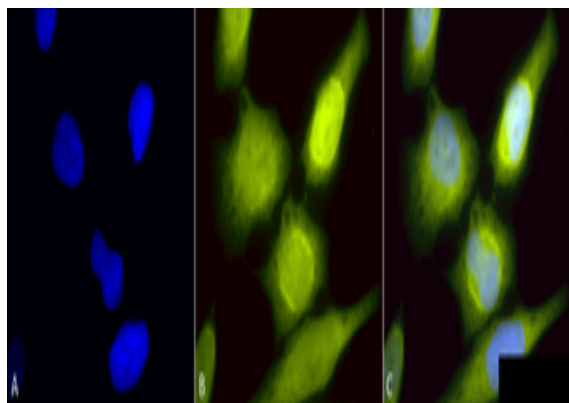
Email: info@biorbyt.com, support@biorbyt.com
Phone: [+44 \(0\)1223 859353](tel:+44(0)1223859353) | Fax: [+1 \(415\) 651-8558](tel:+1(415)651-8558)

Biorbyt LLC

68 TW Alexander Drive
Research Triangle Park
Durham
NC 27713
United States

Email: info@biorbyt.com, support@biorbyt.com
Phone: [+1 \(415\) 906-5211](tel:+1(415)906-5211) | Fax: [+1 \(415\) 651-8558](tel:+1(415)651-8558)

Tested applications	ELISA, ICC, IF, IHC, IP, WB
Dilution range	WB (1:1000), ICC/IF (1:60)
Application notes	1 µl/ml was sufficient for detection of Aha1 in 10 µg of mixed human cell lysate by colorimetric immunoblot analysis using Goat anti-mouse IgG:HRP as the secondary antibody.
Specificity	Detects ~ 38kDa.
Storage	Conjugated antibodies should be stored according to the product label
Note	For research use only
Entrez	217737
NCBI	NP_666148.1
Expiration Date	12 months from date of receipt.



Immunocytochemistry/Immunofluorescence analysis using Rabbit Anti-AHA1 Polyclonal Antibody. Tissue: Heat Shocked Cervical cancer cell line (HeLa). Species: Human. Fixation: 2% Formaldehyde for 20 min at RT. Primary Antibody: Rabbit Anti-AHA1 Polyclonal Antibody at 1:60 for 12 hours at 4°C. Secondary Antibody: R-PE Goat Anti-Rabbit (yellow) at 1:200 for 2 hours at RT. Counterstain: DAPI (blue) nuclear stain at 1:40000 for 2 hours at RT. Localization: Cytoplasm. Endoplasmic reticulum. Magnification: 100x. (A) DAPI (blue) nuclear stain. (B) Anti-AHA1 Antibody. (C) Composite. Heat Shocked at 42°C for 1h.

Biorbyt Ltd.

7 Signet Court, Swann Road
Cambridge
CB5 8LA
United Kingdom

Email: info@biorbyt.com, support@biorbyt.com

Phone: [+44 \(0\)1223 859353](tel:+44(0)1223859353) | Fax: [+1 \(415\) 651-8558](tel:+1(415)651-8558)

Biorbyt LLC

68 TW Alexander Drive
Research Triangle Park
Durham
NC 27713
United States

Email: info@biorbyt.com, support@biorbyt.com

Phone: [+1 \(415\) 906-5211](tel:+1(415)906-5211) | Fax: [+1 \(415\) 651-8558](tel:+1(415)651-8558)

