

Product Datasheet

Cytokeratin Mouse Monoclonal Antibody (orb1520125)

Catalog Number	orb1520125
Category	Antibodies
Description	Cytokeratin Antibody
Target	Cytokeratin
Clonality	Monoclonal
Species/Host	Mouse
Isotype	IgG1
Conjugation	Unconjugated
Reactivity	Human
Form/Appearance	Liquid
Concentration	200 µg/ml
Buffer/Preservatives	Phosphate Buffered Saline (PBS) pH 8.2 with 0.1% rAlbumin and 0.09% Sodium Azide
Purity	The antibody was purified from cell culture supernatant
Purification	Purified
Immunogen	Human epidermal callus
UniProt ID	P13645, P19012, P08727, P08779, P02533

Biorbyt Ltd.

7 Signet Court, Swann Road
Cambridge
CB5 8LA
United Kingdom

Email: info@biorbyt.com, support@biorbyt.com

Phone: [+44 \(0\)1223 859353](tel:+44(0)1223859353) | Fax: [+1 \(415\) 651-8558](tel:+1(415)651-8558)

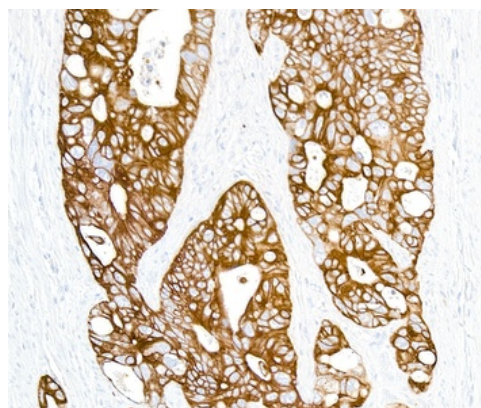
Biorbyt LLC

68 TW Alexander Drive
Research Triangle Park
Durham
NC 27713
United States

Email: info@biorbyt.com, support@biorbyt.com

Phone: [+1 \(415\) 906-5211](tel:+1(415)906-5211) | Fax: [+1 \(415\) 651-8558](tel:+1(415)651-8558)

Tested applications	ICC, IF, IHC
Dilution range	Immunocytochemistry (ICC) 1:100 to 1:500. Epitope retrieval with citrate buffer pH6.0 is recommended for FFPE cell sections. ICC-IF1:100 - 1:500. Immunohistochemistry (IHC) 1:100 - 1:500. Epitope retrieval with citrate buffer pH 6.0 is recommended for FFPE tissue sections. IHC-IF 1:100 to 1:500. Epitope retrieval with citrate buffer pH6.0 is recommended for FFPE tissue sections. Multiplex Immunofluorescence (mIF) 1:250
Application notes	Format: Whole IgG
Antibody Type	Primary Antibody
Clone Number	AE1/AE3
Storage	2 - 8°C
Note	For research use only
NCBI	NP_000412.4
Expiration Date	12 months from date of receipt.



Detection of human Cytokeratin by immunohistochemistry.
Sample: FFPE section of colon carcinoma. Antibody: Mouse anti-Cytokeratin monoclonal antibody [AE1/AE3]. Secondary: HRP-conjugated goat anti-mouse IgG.

Biorbyt Ltd.

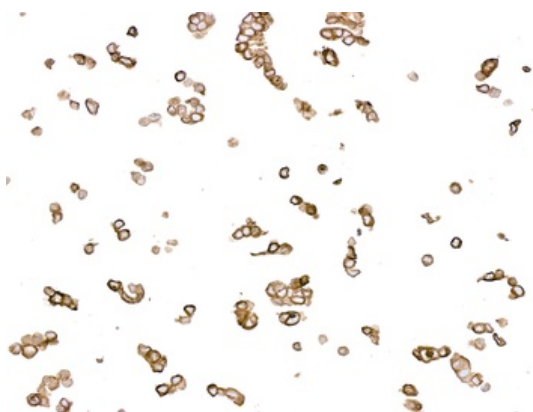
7 Signet Court, Swann Road
Cambridge
CB5 8LA
United Kingdom

Email: info@biorbyt.com, support@biorbyt.com
Phone: [+44 \(0\)1223 859353](tel:+44(0)1223859353) | Fax: [+1 \(415\) 651-8558](tel:+1(415)651-8558)

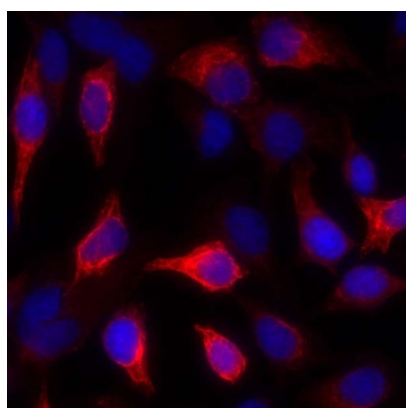
Biorbyt LLC

68 TW Alexander Drive
Research Triangle Park
Durham
NC 27713
United States

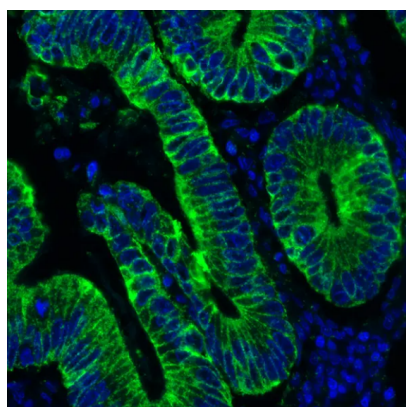
Email: info@biorbyt.com, support@biorbyt.com
Phone: [+1 \(415\) 906-5211](tel:+1(415)906-5211) | Fax: [+1 \(415\) 651-8558](tel:+1(415)651-8558)



Detection of human Cytokeratin by immunocytochemistry. Sample: FFPE section of MCF7 cells. Antibody: Mouse anti-Cytokeratin monoclonal antibody [AE1/AE3] (orb1520125). Secondary: HRP-conjugated goat anti-mouse IgG.



Detection of human Cytokeratin by immunocytochemistry. Sample: acetone/methanol fixed HeLa cells. Antibody: Mouse monoclonal anti-Cytokeratin antibody [AE1/AE1] (orb1520125) used at 1:100. Secondary: DyLight® 594-conjugated goat anti-mouse IgG. Counterstain: DAPI.



Detection of human Cytokeratin (green) by immunohistochemistry. Sample: FFPE section of human colon carcinoma. Antibody: Mouse anti-Cytokeratin monoclonal antibody used at 1:500. Secondary: HRP-conjugated goat anti-mouse IgG. Substrate: Opal™. Counterstain: DAPI (blue).

Biorbyt Ltd.

7 Signet Court, Swann Road
Cambridge
CB5 8LA
United Kingdom

Email: info@biorbyt.com, support@biorbyt.com

Phone: [+44 \(0\)1223 859353](tel:+44(0)1223859353) | Fax: [+1 \(415\) 651-8558](tel:+1(415)651-8558)

Biorbyt LLC

68 TW Alexander Drive
Research Triangle Park
Durham
NC 27713
United States

Email: info@biorbyt.com, support@biorbyt.com

Phone: [+1 \(415\) 906-5211](tel:+1(415)906-5211) | Fax: [+1 \(415\) 651-8558](tel:+1(415)651-8558)