

Product Datasheet

Rabbit SMC1 Recombinant Monoclonal Antibody (orb1519958)

Catalog Number	orb1519958
Category	Antibodies
Description	SMC1 Antibody
Target	SMC1
Clonality	Recombinant
Species/Host	Rabbit
Isotype	IgG
Conjugation	Unconjugated
Reactivity	Human, Mouse
Predicted Reactivity	Bovine, Rat
Form/Appearance	Liquid
Concentration	50 µg/ml
Buffer/Preservatives	Borate Buffered Saline (BBS) pH 8.2 with 0.1% rAlbumin and 0.09% Sodium Azide
Purification	Purified
Immunogen	Between 1183 and C-terminus
UniProt ID	Q14683

Biorbyt Ltd.

7 Signet Court, Swann Road
Cambridge
CB5 8LA
United Kingdom

Email: info@biorbyt.com, support@biorbyt.com

Phone: [+44 \(0\)1223 859353](tel:+44(0)1223859353) | Fax: [+1 \(415\) 651-8558](tel:+1(415)651-8558)

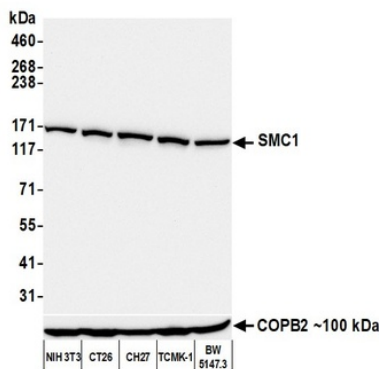
Biorbyt LLC

68 TW Alexander Drive
Research Triangle Park
Durham
NC 27713
United States

Email: info@biorbyt.com, support@biorbyt.com

Phone: [+1 \(415\) 906-5211](tel:+1(415)906-5211) | Fax: [+1 \(415\) 651-8558](tel:+1(415)651-8558)

Tested applications	FC, ICC, IHC, IP, WB
Dilution range	WB - 1:1000; IP - 20 µl/mg lysate; IHC - 1:100 - 1:500. Epitope retrieval with citrate buffer pH 6.0 is recommended for FFPE tissue sections.; ICC - 1:100 - 1:500. Epitope retrieval with citrate buffer pH6.0 is recommended for FFPE cell sections.; IHC-IF - 1:100 - 1:500. Epitope retrieval with citrate buffer pH 6.0 is recommended for FFPE tissue sections.
Application notes	Format: Whole IgG
Antibody Type	Primary Antibody
Clone Number	BL-205-2G8
Storage	2 - 8°C
Note	For research use only
NCBI	NP_006297.2
Expiration Date	12 months from date of receipt.



Detection of mouse SMC1 by western blot. Samples: Whole cell lysate (50 µg) from NIH 3T3, CT26, CH27, TCMK-1, and BW5147.3 cells prepared using NETN lysis buffer. Antibody: Rabbit anti-SMC1 recombinant monoclonal antibody [BL-205-2G8] (orb1519958) used at 1:1000. Secondary: HRP-conjugated goat anti-rabbit IgG. Detection: Chemiluminescence with an exposure time of 10 seconds. Lower Panel: Rabbit anti-COPB2 antibody.

Biorbyt Ltd.

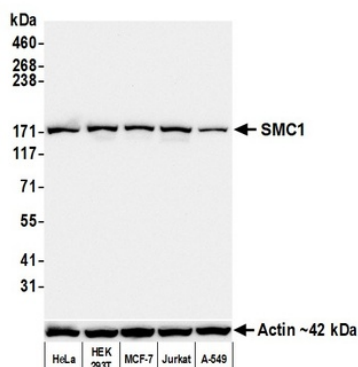
7 Signet Court, Swann Road
Cambridge
CB5 8LA
United Kingdom

Email: info@biorbyt.com, support@biorbyt.com
Phone: [+44 \(0\)1223 859353](tel:+44(0)1223859353) | Fax: [+1 \(415\) 651-8558](tel:+1(415)6518558)

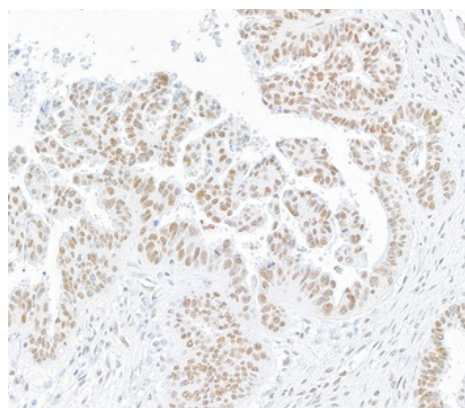
Biorbyt LLC

68 TW Alexander Drive
Research Triangle Park
Durham
NC 27713
United States

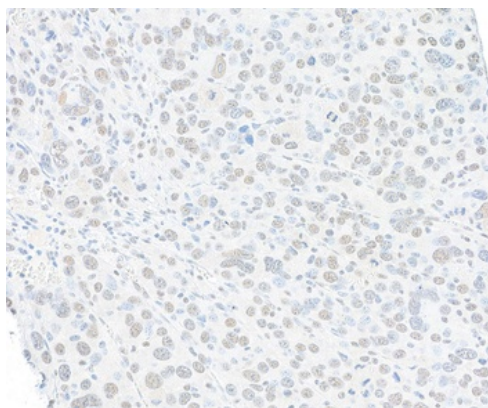
Email: info@biorbyt.com, support@biorbyt.com
Phone: [+1 \(415\) 906-5211](tel:+1(415)9065211) | Fax: [+1 \(415\) 651-8558](tel:+1(415)6518558)



Detection of human SMC1 by western blot. Samples: Whole cell lysate (50 µg) from HeLa, HEK293T, MCF-7, Jurkat, and A-549 cells prepared using NETN lysis buffer. Antibody: Rabbit anti-SMC1 recombinant monoclonal antibody [BL-205-2G8] (orb1519958) used at 1:1000. Secondary: HRP-conjugated goat anti-rabbit IgG. Detection: Chemiluminescence with an exposure time of 10 seconds. Lower Panel: Rabbit anti-Actin recombinant monoclonal antibody.



Detection of human SMC1 by immunohistochemistry. Sample: FFPE section of human ovarian carcinoma. Antibody: Rabbit anti-SMC1 recombinant monoclonal antibody [BL-205-2G8] (orb1519958). Secondary: HRP-conjugated goat anti-rabbit IgG.



Detection of mouse SMC1 by immunohistochemistry. Sample: FFPE section of mouse renal cell carcinoma. Antibody: Rabbit anti-SMC1 recombinant monoclonal antibody [BL-205-2G8] (orb1519958). Secondary: HRP-conjugated goat anti-rabbit IgG.

Biorbyt Ltd.

7 Signet Court, Swann Road
Cambridge
CB5 8LA
United Kingdom

Email: info@biorbyt.com, support@biorbyt.com

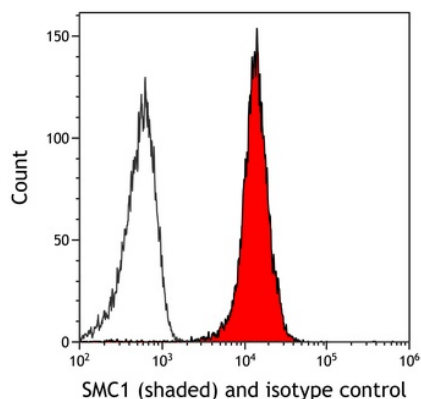
Phone: +44 (0)1223 859353 | Fax: +1 (415) 651-8558

Biorbyt LLC

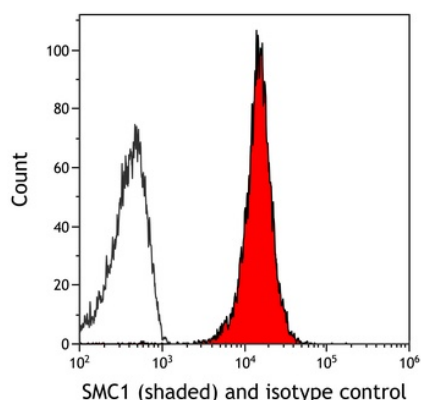
68 TW Alexander Drive
Research Triangle Park
Durham
NC 27713
United States

Email: info@biorbyt.com, support@biorbyt.com

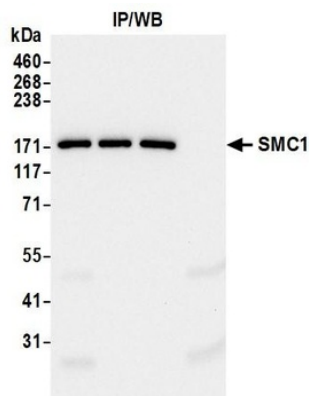
Phone: +1 (415) 906-5211 | Fax: +1 (415) 651-8558



Detection of mouse SMC1 (shaded) in NIH3T3 cells by flow cytometry. Antibody: Rabbit anti-SMC1 recombinant monoclonal [BL-205-2G8] (orb1519958) or isotype control (unshaded). Secondary: DyLight® 650-conjugated goat anti-rabbit IgG.



Detection of human SMC1 (shaded) in HT-29 cells by flow cytometry. Antibody: Rabbit anti-SMC1 recombinant monoclonal [BL-205-2G8] (orb1519958) or isotype control (unshaded). Secondary: DyLight® 650-conjugated goat anti-rabbit IgG.



Detection of human SMC1 by western blot of immunoprecipitates. Samples: Whole cell lysate (1.0 mg per IP reaction; 20% of IP loaded) from HeLa cells prepared using NETN lysis buffer. Antibodies: Rabbit anti-SMC1 recombinant monoclonal antibody [BL-205-2G8] (orb1519958) used for IP at 20 µl/mg lysate.

Biorbyt Ltd.

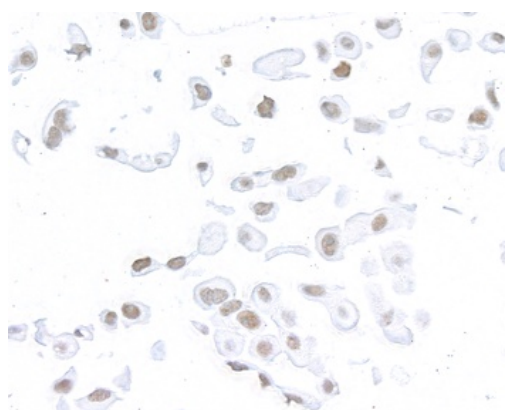
7 Signet Court, Swann Road
Cambridge
CB5 8LA
United Kingdom

Email: info@biorbyt.com, support@biorbyt.com
Phone: +44 (0)1223 859353 | Fax: +1 (415) 651-8558

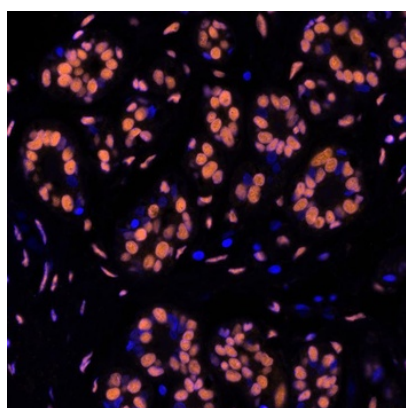
Biorbyt LLC

68 TW Alexander Drive
Research Triangle Park
Durham
NC 27713
United States

Email: info@biorbyt.com, support@biorbyt.com
Phone: +1 (415) 906-5211 | Fax: +1 (415) 651-8558



Detection of human SMC1 by immunocytochemistry. Sample: FFPE section of NCI-H226 cells. Antibody: Rabbit anti-SMC1 recombinant monoclonal antibody [BL-205-2G8] (orb1519958). Secondary: HRP-conjugated goat anti-rabbit IgG.



Detection of human SMC1 in FFPE breast carcinoma by immunohistochemistry-IF. Antibody: Rabbit anti-SMC1 recombinant monoclonal antibody [BL-205-2G8] (orb1519958). Secondary: HRP-conjugated goat anti-rabbit IgG. Substrate: Opal™. Counterstain: DAPI.

Biorbyt Ltd.

7 Signet Court, Swann Road
Cambridge
CB5 8LA
United Kingdom

Email: info@biorbyt.com, support@biorbyt.com

Phone: [+44 \(0\)1223 859353](tel:+44(0)1223859353) | Fax: [+1 \(415\) 651-8558](tel:+1(415)651-8558)

Biorbyt LLC

68 TW Alexander Drive
Research Triangle Park
Durham
NC 27713
United States

Email: info@biorbyt.com, support@biorbyt.com

Phone: [+1 \(415\) 906-5211](tel:+1(415)906-5211) | Fax: [+1 \(415\) 651-8558](tel:+1(415)651-8558)