

## Product Datasheet

# Granzyme B Rabbit Recombinant Monoclonal Antibody (orb1519946)

<b>Catalog Number</b>	orb1519946
<b>Category</b>	Antibodies
<b>Description</b>	Granzyme B Antibody
<b>Target</b>	Granzyme B
<b>Clonality</b>	Recombinant
<b>Species/Host</b>	Rabbit
<b>Isotype</b>	IgG
<b>Conjugation</b>	Unconjugated
<b>Reactivity</b>	Human
<b>Form/Appearance</b>	Liquid
<b>Concentration</b>	50 µg/ml
<b>Buffer/Preservatives</b>	Borate Buffered Saline (BBS) pH 8.2 with 0.1% rAlbumin and 0.09% Sodium Azide
<b>Purity</b>	The monoclonal antibody was purified from cell culture supernatant
<b>Purification</b>	Purified
<b>Immunogen</b>	Residues 19-247 (mature protein)
<b>UniProt ID</b>	<b>P10144</b>

### Biorbyt Ltd.

7 Signet Court, Swann Road  
Cambridge  
CB5 8LA  
United Kingdom

Email: [info@biorbyt.com](mailto:info@biorbyt.com), [support@biorbyt.com](mailto:support@biorbyt.com)

Phone: [+44 \(0\)1223 859353](tel:+44(0)1223859353) | Fax: [+1 \(415\) 651-8558](tel:+1(415)651-8558)

### Biorbyt LLC

68 TW Alexander Drive  
Research Triangle Park  
Durham  
NC 27713  
United States

Email: [info@biorbyt.com](mailto:info@biorbyt.com), [support@biorbyt.com](mailto:support@biorbyt.com)

Phone: [+1 \(415\) 906-5211](tel:+1(415)906-5211) | Fax: [+1 \(415\) 651-8558](tel:+1(415)651-8558)

<b>Tested applications</b>	ICC, IF, IHC, WB
<b>Dilution range</b>	Flow-Cyt Fixed in 4% formaldehyde and permeabilized with 90% methanol. 1 $\mu$ l per $1 \times 10^6$ cells. Immunocytochemistry (ICC) 1:100 - 1:500. Epitope retrieval with citrate buffer pH6.0 is recommended for FFPE cell sections. Immunohistochemistry (IHC) 1:100 - 1:500. Epitope retrieval with citrate buffer pH 6.0 is recommended for FFPE tissue sections. IHC-IF 1:100 to 1:500. Epitope retrieval with citrate buffer pH6.0 is recommended for FFPE tissue sections. Multiplex Immunofluorescence (mIF) 1:250. Western Blot (WB) 1:1000
<b>Application notes</b>	All western blot analysis is performed using 5% Milk-TBST for blocking and as antibody diluent. Primary antibody is incubated overnight
<b>Antibody Type</b>	Primary Antibody
<b>Clone Number</b>	BLR022E
<b>Storage</b>	2 - 8°C
<b>Background</b>	Granzyme B is a member of the granzyme subfamily of proteins, part of the peptidase S1 family of serine proteases. The preproprotein is secreted by natural killer (NK) cells and cytotoxic T lymphocytes (CTLs) and proteolytically processed to generate the active protease, which induces target cell apoptosis. This protein also processes cytokines and degrades extracellular matrix proteins, and these roles are implicated in chronic inflammation and wound healing
<b>Note</b>	For research use only
<b>NCBI</b>	<a href="#">NP_004122.2</a>
<b>Expiration Date</b>	12 months from date of receipt.

**Biorbyt Ltd.**

7 Signet Court, Swann Road  
Cambridge  
CB5 8LA  
United Kingdom

Email: [info@biorbyt.com](mailto:info@biorbyt.com), [support@biorbyt.com](mailto:support@biorbyt.com)

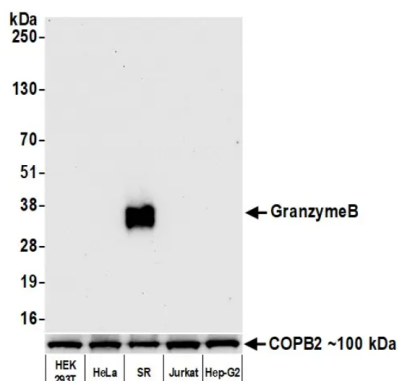
Phone: [+44 \(0\)1223 859353](tel:+44(0)1223859353) | Fax: [+1 \(415\) 651-8558](tel:+1(415)651-8558)

**Biorbyt LLC**

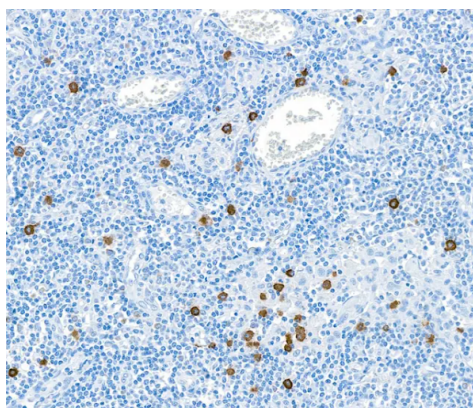
68 TW Alexander Drive  
Research Triangle Park  
Durham  
NC 27713  
United States

Email: [info@biorbyt.com](mailto:info@biorbyt.com), [support@biorbyt.com](mailto:support@biorbyt.com)

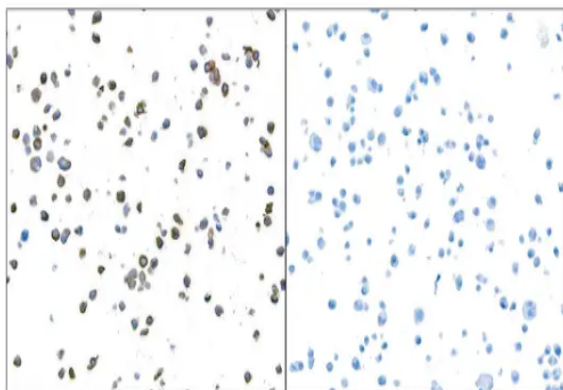
Phone: [+1 \(415\) 906-5211](tel:+1(415)906-5211) | Fax: [+1 \(415\) 651-8558](tel:+1(415)651-8558)



Detection of human Granzyme B by western blot. Samples: Whole cell lysate (15 µg) from HEK293T, HeLa, SR, Jurkat, and Hep-G2 cells prepared using NETN lysis buffer. Antibody: Rabbit anti-GranzymeB recombinant monoclonal antibody used at 1:1000. Secondary: HRP-conjugated goat anti-rabbit IgG. Detection: Chemiluminescence with an exposure time of 10 seconds. Lower Panel: Rabbit anti-COPB2 antibody



Detection of human Granzyme B by immunohistochemistry. Sample: FFPE section of lymph node. Antibody: Rabbit anti-Granzyme B recombinant monoclonal antibody. Secondary: HRP-conjugated goat anti-rabbit IgG



Detection of human Granzyme B by immunocytochemistry. Sample: FFPE section of Granzyme B over-expressing cells (left) and Granzyme H over-expressing cells (right). Antibody: Rabbit anti-Granzyme B recombinant monoclonal antibody. Secondary: HRP-conjugated goat anti-rabbit IgG

**Biorbyt Ltd.**

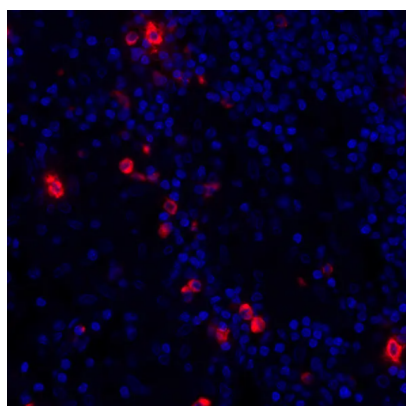
7 Signet Court, Swann Road  
Cambridge  
CB5 8LA  
United Kingdom

Email: [info@biorbyt.com](mailto:info@biorbyt.com), [support@biorbyt.com](mailto:support@biorbyt.com)  
Phone: +44 (0)1223 859353 | Fax: +1 (415) 651-8558

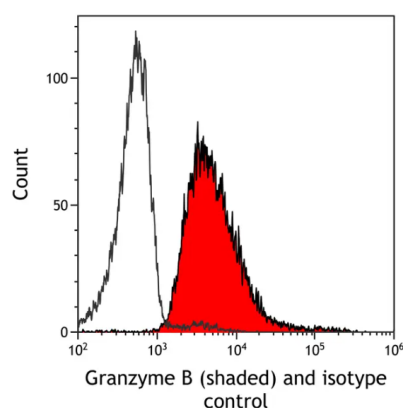
**Biorbyt LLC**

68 TW Alexander Drive  
Research Triangle Park  
Durham  
NC 27713  
United States

Email: [info@biorbyt.com](mailto:info@biorbyt.com), [support@biorbyt.com](mailto:support@biorbyt.com)  
Phone: +1 (415) 906-5211 | Fax: +1 (415) 651-8558



Detection of human Granzyme B (red) by immunohistochemistry. Sample: FFPE section of human lung carcinoma. Antibody: Rabbit anti-Granzyme B recombinant monoclonal antibody used at 1:250. Secondary: HRP-conjugated goat anti-rabbit IgG Substrate: Opal™. Counterstain: DAPI (blue)



Detection of human Granzyme B (shaded) in SR cells by flow cytometry. Antibody: Rabbit anti-Granzyme B recombinant monoclonal antibody or isotype control (unshaded). Secondary: DyLight® 650-conjugated goat anti-rabbit IgG

**Biorbyt Ltd.**

7 Signet Court, Swann Road  
Cambridge  
CB5 8LA  
United Kingdom

Email: [info@biorbyt.com](mailto:info@biorbyt.com), [support@biorbyt.com](mailto:support@biorbyt.com)  
Phone: [+44 \(0\)1223 859353](tel:+44(0)1223859353) | Fax: [+1 \(415\) 651-8558](tel:+1(415)651-8558)

**Biorbyt LLC**

68 TW Alexander Drive  
Research Triangle Park  
Durham  
NC 27713  
United States

Email: [info@biorbyt.com](mailto:info@biorbyt.com), [support@biorbyt.com](mailto:support@biorbyt.com)  
Phone: [+1 \(415\) 906-5211](tel:+1(415)906-5211) | Fax: [+1 \(415\) 651-8558](tel:+1(415)651-8558)