

## Product Datasheet

### HSP22 Antibody (HRP) (orb151983)

<b>Catalog Number</b>	orb151983
<b>Category</b>	Antibodies
<b>Description</b>	<p>Rabbit polyclonal to Hsp22 (HRP). Hsp22 (HSPB8) is a 196-amino acid protein that is a member of the small heat shock protein super-family and the human protein is most closely related to Hsp27. Similar to most other sHSPs, Hsp22 is predominately transcribed in skeletal muscle and heart, as well as the placenta. Hsp22 is a monomeric protein which interacts with HSPB1. It displays temperature-dependent chaperone activity. In a two hybrid screen, HspB8 interacted preferentially with a triple aspartate form of Hsp27 which mimics Hsp27 phosphorylated at Ser15, Ser78, and Ser82, as compared to wild-type Hsp27. HSPB8 has two binding domains (N and C Terminal) that are specific for different binding partners, and has the ability to bind itself and other sHSPs. The chaperone-like activity is of great importance to the function of Hsp22 in various processes including proliferation, apoptosis and macro autophagy. Mutations in the HSPB8 gene are associated with the inherited peripheral neuropathies, autosomal dominant distal hereditary motor neuropathy type IIA (dSMA) and axonal Charcot-Marie-Tooth disease type 2L (CMT2L)..</p>
<b>Target</b>	HSP22
<b>Clonality</b>	Polyclonal
<b>Species/Host</b>	Rabbit
<b>Conjugation</b>	HRP
<b>Reactivity</b>	Human, Mouse, Rat
<b>Concentration</b>	1 mg/ml
<b>Buffer/Preservatives</b>	73.64mM Carbonate, 54.55mM Ethanolamine, 45.45mM Cyanoborohydride, 18.18mM Sodium Hydroxide, 0.23mM Citrate

**Biorbyt Ltd.**

7 Signet Court, Swann Road  
Cambridge  
CB5 8LA  
United Kingdom

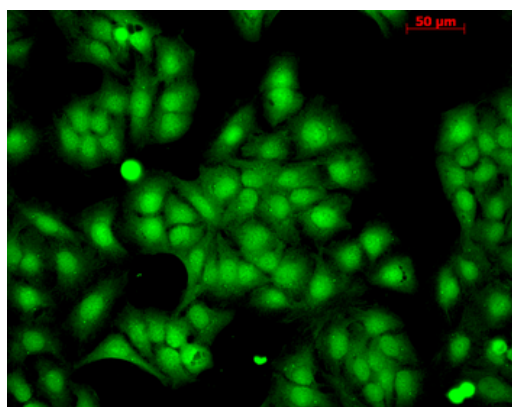
Email: [info@biorbyt.com](mailto:info@biorbyt.com), [support@biorbyt.com](mailto:support@biorbyt.com)  
Phone: [+44 \(0\)1223 859353](tel:+44(0)1223859353) | Fax: [+1 \(415\) 651-8558](tel:+1(415)651-8558)

**Biorbyt LLC**

68 TW Alexander Drive  
Research Triangle Park  
Durham  
NC 27713  
United States

Email: [info@biorbyt.com](mailto:info@biorbyt.com), [support@biorbyt.com](mailto:support@biorbyt.com)  
Phone: [+1 \(415\) 906-5211](tel:+1(415)906-5211) | Fax: [+1 \(415\) 651-8558](tel:+1(415)651-8558)

<b>Purification</b>	Peptide Affinity Purified
<b>Immunogen</b>	Human HSP22
<b>UniProt ID</b>	<b>Q9UJY1</b>
<b>MW</b>	22kDa
<b>Tested applications</b>	ICC, IF, IHC, IP, WB
<b>Dilution range</b>	WB (1:1000), ICC/IF (1:100), IHC (1:100)
<b>Application notes</b>	A 1:1000 dilution was sufficient for detection of HSP22 in 10 µg of rat tissue lysate by colorimetric immunoblot analysis using Goat anti-rabbit IgG:HRP as the secondary antibody.
<b>Specificity</b>	Detects ~22kDa. Does not cross-react with HSP27 or alpha-crystallin.
<b>Storage</b>	Conjugated antibodies should be stored according to the product label
<b>Note</b>	For research use only
<b>Entrez</b>	<b>26353</b>
<b>NCBI</b>	<b>NP_055180.1</b>
<b>Expiration Date</b>	12 months from date of receipt.



Immunocytochemistry/Immunofluorescence analysis using Rabbit Anti-HSP22 Polyclonal Antibody. Tissue: HaCaT cells. Species: Human. Fixation: Cold 100% methanol at -20C for 10 minutes. Primary Antibody: Rabbit Anti-HSP22 Polyclonal Antibody at 1:100 for 12 hours at 4°C. Secondary Antibody: FITC Goat Anti-Rabbit at 1:50 for 1-2 hours at RT in dark. Localization: Nuclear Staining.

**Biorbyt Ltd.**

7 Signet Court, Swann Road  
Cambridge  
CB5 8LA  
United Kingdom

Email: [info@biorbyt.com](mailto:info@biorbyt.com), [support@biorbyt.com](mailto:support@biorbyt.com)

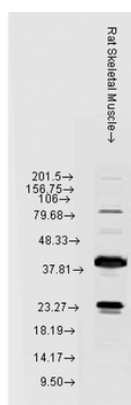
Phone: [+44 \(0\)1223 859353](tel:+44(0)1223859353) | Fax: [+1 \(415\) 651-8558](tel:+1(415)651-8558)

**Biorbyt LLC**

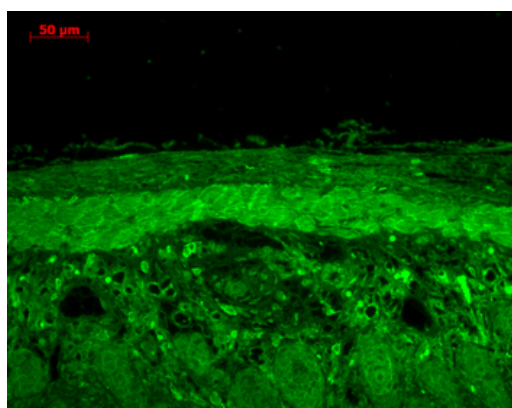
68 TW Alexander Drive  
Research Triangle Park  
Durham  
NC 27713  
United States

Email: [info@biorbyt.com](mailto:info@biorbyt.com), [support@biorbyt.com](mailto:support@biorbyt.com)

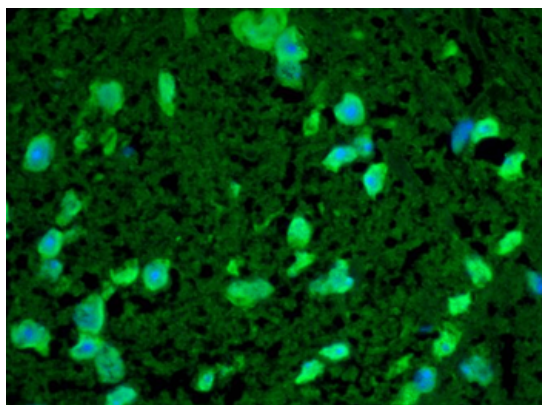
Phone: [+1 \(415\) 906-5211](tel:+1(415)906-5211) | Fax: [+1 \(415\) 651-8558](tel:+1(415)651-8558)



Western blot analysis of Rat Skeletal muscle lysates showing detection of HSP22 protein using Rabbit Anti-HSP22 Polyclonal Antibody. Load: 15 µgprotein. Block: 1.5% BSA for 30 minutes at RT. Primary Antibody: Rabbit Anti-HSP22 Polyclonal Antibody at 1:1000 for 2 hours at RT. Secondary Antibody: Donkey Anti-Rabbit IgG: HRP for 1 hour at RT.



Immunohistochemistry analysis using Rabbit Anti-HSP22 Polyclonal Antibody. Tissue: backskin. Species: Mouse. Fixation: Bouin's Fixative Solution. Primary Antibody: Rabbit Anti-HSP22 Polyclonal Antibody at 1:100 for 1 hour at RT. Secondary Antibody: FITC Goat Anti-Rabbit (green) at 1:50 for 1 hour at RT. Localization: Epidermis positive, dermal staining.



Immunohistochemistry analysis using Rabbit Anti-HSP22 Polyclonal Antibody. Tissue: Spinal cord. Species: Mouse. Primary Antibody: Rabbit Anti-HSP22 Polyclonal Antibody at 1:100. Secondary Antibody: Alexa Fluor 488 Goat Anti-Rabbit. DAPI merged with Alexa 488.

**Biorbyt Ltd.**

7 Signet Court, Swann Road  
Cambridge  
CB5 8LA  
United Kingdom

Email: [info@biorbyt.com](mailto:info@biorbyt.com), [support@biorbyt.com](mailto:support@biorbyt.com)  
Phone: +44 (0)1223 859353 | Fax: +1 (415) 651-8558

**Biorbyt LLC**

68 TW Alexander Drive  
Research Triangle Park  
Durham  
NC 27713  
United States

Email: [info@biorbyt.com](mailto:info@biorbyt.com), [support@biorbyt.com](mailto:support@biorbyt.com)  
Phone: +1 (415) 906-5211 | Fax: +1 (415) 651-8558